



Worcester Close, SE20 | £315,000

02087029333

crystalpalace@pedderproperty.com

pedder
We live local



In General

- First floor flat
- Private terrace
- Popular development
- Nearby multiple transport links
- Lift
- Allocated parking
- No onward chain

In Detail

A spacious one bed purpose-built flat on the first floor of a popular executive development, close to Crystal Palace Park and several transport links.

This freshly decorated property is well proportioned and benefits from a 26ft living space with double doors to a private balcony. The reception room is socially open to a modern kitchen with sandstone flooring, whilst the bedroom extends to 16ft and has fitted wardrobe storage. Further points to note include an allocated parking space, well maintained common parts, a lift, and secure entry.

Worcester Close is a quiet residential location within easy reach of Anerley, Crystal Palace, and Penge West rail links. There are numerous amenities close by on Anerley Parade, and multiple shopping and leisure options on Crystal Palace Triangle.

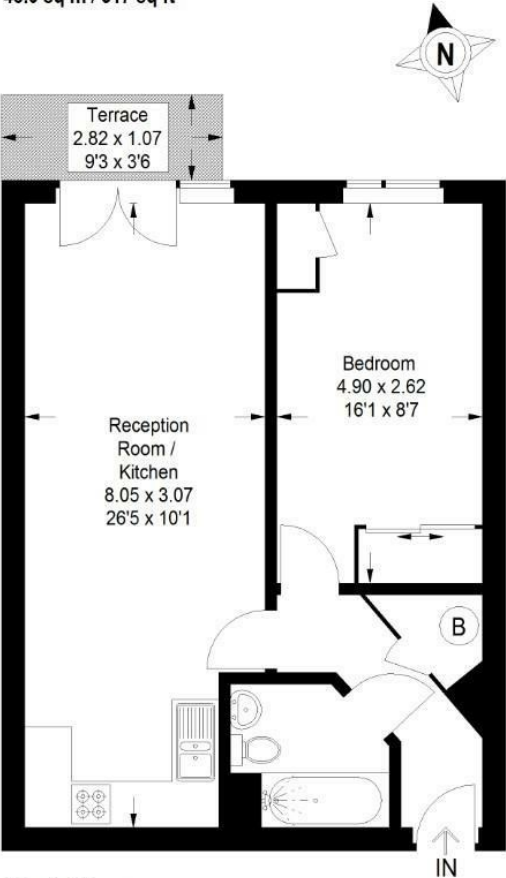
EPC: B | Council Tax Band: C | Lease: 111 Years remaining | SC: £2,200 | GR: £250 | BI: TBC



Floorplan

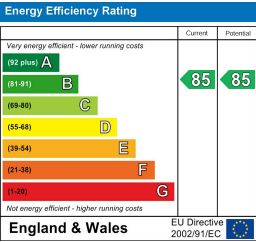
Carfax House, SE20

Approximate Gross Internal Area
48.0 sq m / 517 sq ft



First Floor

Copyright www.pedderproperty.com © 2025
These plans are for representation purposes only
as defined by RICS - Code of Measuring Practice.
Not drawn to Scale. Windows and door openings
are approximate. Please check all dimensions,
shapes and compass bearings before making
any decisions reliant upon them.



Pedder Property Ltd trading as Pedder for themselves and for the vendor/landlord of this property whose agents they are, give notice that (1) these particulars do not constitute any part of an offer or contract, (2) all statements contained within these particulars are made without responsibility on the part of Pedder or the vendor/landlord, (3) whilst made in good faith, none of the statements contained within these particulars are to be relied upon as a statement of representation or fact, (4) any intending purchaser/tenant must satisfy him/herself by inspection or otherwise as to the correctness of each of the statements contained within these particulars, (5) the vendor/landlord does not make or give either Pedder or any person in their employment any authority to make or give representation or warranty whatsoever in relation to this property.