



Colby Road, SE19 | £795,000

02087029333

crystalpalace@pedderproperty.com

pedder
We live local



In General

- Well presented mid-century house
- Sought after location
- No onward chain
- Extension potential (STP)
- Sunny rear garden
- Garage
- 18ft kitchen / diner
- Close to schools and transport links

In Detail

A very well presented and rarely available three bedroom mid-century semi-detached house forming a quiet residential road moments from Gipsy Hill station.

This fresh and inviting property is arranged over two levels and offers neutrally decorated accommodation to be immediately enjoyed, providing an ideal long-term opportunity. The entrance level has been modified to include a socially open-plan 18ft kitchen / diner which has ample prep and storage space, also a sit-up breakfast bar. This light and bright room benefits from under floor heating and makes an ideal area for entertaining friends and family, or enjoying a meal overlooking the garden. A separate utility room is accessed off of the kitchen and is a handy space to keep laundry and other items out of the way. The front reception room makes a cosy and comfortable evening retreat and features a gas fireplace and a large window for lots of natural light. Upstairs there are three bedrooms, ample fitted storage, and a bathroom finished with travertine tiling, premium fittings & underfloor heating. Externally there is a pretty cultivated rear garden with a raised patio seating area and a sunny south-westerly aspect. This low maintenance space includes side access and provides the perfect platform for quiet relaxation or barbeques on summer days.

For those looking to increase the space over time, the potential to extend or remodel (STP) is huge with precedent already set for loft / garage conversions and other extensions.

Colby Road is located off of Dulwich Wood Avenue and Gipsy Hill which is ideal for the abundance of amenities at the Crystal Palace Triangle, also Gipsy Parade, and slightly further to West Dulwich. If schools are a consideration then Paxton, Kingswood, and Dulwich Wood Primaries are all nearby.

No onward chain.

EPC: C | Council Tax Band: E

1

2

3

4

5

6

7

8

9

10

11

12

13

14

15

16

17

18

19

20

21

22

23

24

25

26

27

28

29

30

31

32

33

34

35

36

37

38

39

40

41

42

43

44

45

46

47

48

49

50

51

52

53

54

55

56

57

58

59

60

61

62

63

64

65

66

67

68

69

70

71

72

73

74

75

76

77

78

79

80

81

82

83

84

85

86

87

88

89

90

91

92

93

94

95

96

97

98

99

100

101

102

103

104

105

106

107

108

109

110

111

112

113

114

115

116

117

118

119

120

121

122

123

124

125

126

127

128

129

130

131

132

133

134

135

136

137

138

139

140

141

142

143

144

145

146

147

148

149

150

151

152

153

154

155

156

157

158

159

160

161

162

163

164

165

166

167

168

169

170

171

172

173

174

175

176

177

178

179

180

181

182

183

184

185

186

187

188

189

190

191

192

193

194

195

196

197

198

199

200

201

202

203

204

205

206

207

208

209

210

211

212

213

214

215

216

217

218

219

220

221

222

223

224

225

226

227

228

229

230

231

232

233

234

235

236

237

238

239

240

241

242

243

244

245

246

247

248

249

250

251

252

253

254

255

256

257

258

259

260

261

262

263

264

265

266

267

268

269

270

271

272

273

274

275

276

277

278

279

280

281

282

283

284

285

286

287

288

289

290

291

292

293

294

295

296

297

298

299

300

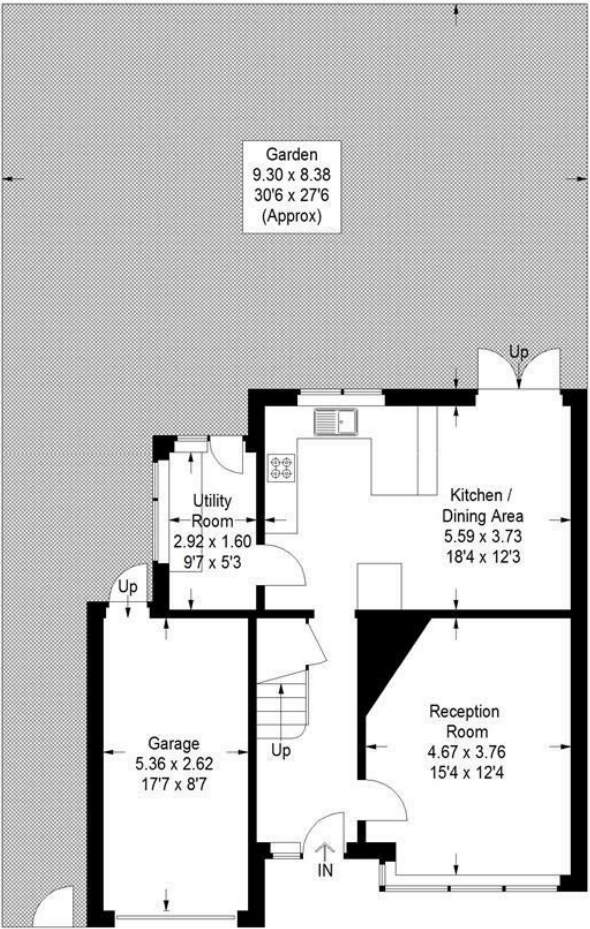
301

302

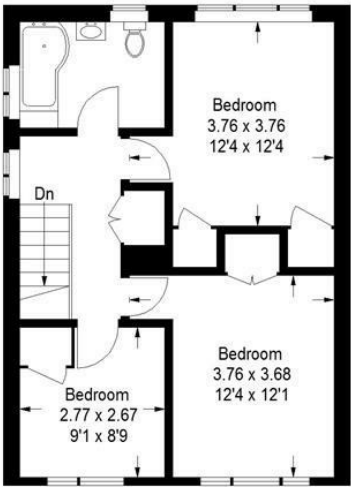
Floorplan

Colby Road, SE19

Approximate Gross Internal Area
101.1 sq m / 1088 sq ft
Garage = 14.6 sq m / 157 sq ft
Total = 115.7 sq m / 1245 sq ft

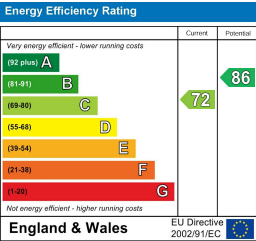


Ground Floor



First Floor

Copyright www.pedderproperty.com © 2024
These plans are for representation purposes only as defined by RICS - Code of Measuring Practice.
Not drawn to Scale. Windows and door openings are approximate. Please check all dimensions, shapes and compass bearings before making any decisions reliant upon them.



Pedder Property Ltd trading as Pedder for themselves and for the vendor/landlord of this property whose agents they are, give notice that (1) these particulars do not constitute any part of an offer or contract, (2) all statements contained within these particulars are made without responsibility on the part of Pedder or the vendor/landlord, (3) whilst made in good faith, none of the statements contained within these particulars are to be relied upon as a statement of representation or fact, (4) any intending purchaser/tenant must satisfy him/herself by inspection or otherwise as to the correctness of each of the statements contained within these particulars, (5) the vendor/landlord does not make or give either Pedder or any person in their employment any authority to make or give representation or warranty whatsoever in relation to this property.