



Crystal Palace Park Road, SE26 | £550,000

020 8702 9333

crystalpalace@pedderproperty.com

pedder
We live local



In General

- No onward chain
- 906 sq ft / 84.2 sq m
- En suite shower room
- Characterful accommodation
- Backs onto Crystal Palace Park
- 24ft dual aspect reception room
- Utility room
- Breakfast bar
- Private entrance

In Detail

A spacious and characterful two bedroom, two bathroom hall floor period conversion positioned on a sought after road and backing onto Crystal Palace Park.

This unique property forms part of a very attractive detached Victorian building and benefits from a private front entrance. The main living area is an open plan arrangement to the kitchen which has granite countertops and a sit-up breakfast bar, also a sizeable utility room. The space is light and bright due to a double aspect and boasts high ceilings, solid wood flooring, and period features such as ornate coving - an impressive space for both entertaining and relaxing. Both bedrooms are of a double proportion, the larger at the rear of the building with an en suite shower room and large windows which frame the outside greenery. Other points to note include a storage room at the entrance (ideal for bikes), no onward chain, and residents off street parking.

This location provides ease of access to Crystal Palace, Sydenham, Sydenham Hill, Penge West and Penge East rail links to central London, as well as nearby leisure and shopping amenities at the Crystal Palace Triangle, and 200 acres of parkland on the doorstep.

EPC: D | Council Tax Band: D | Lease: 106 years remaining | SC: £1,500 | GR: £250 | BI: £606

1

2

3

4

5

6

7

8

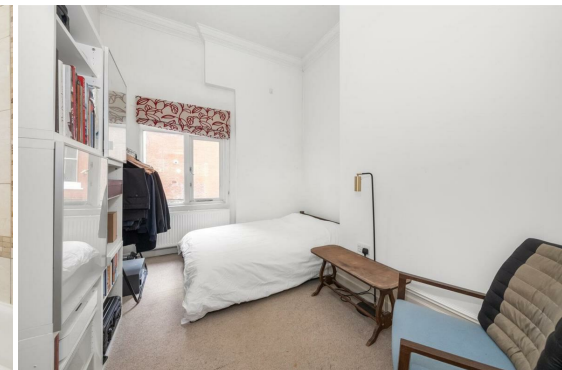
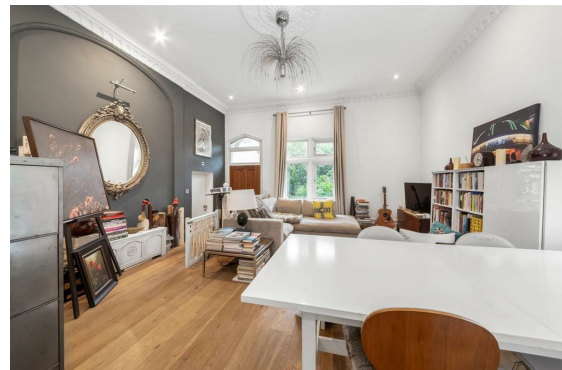
9

10

11

12

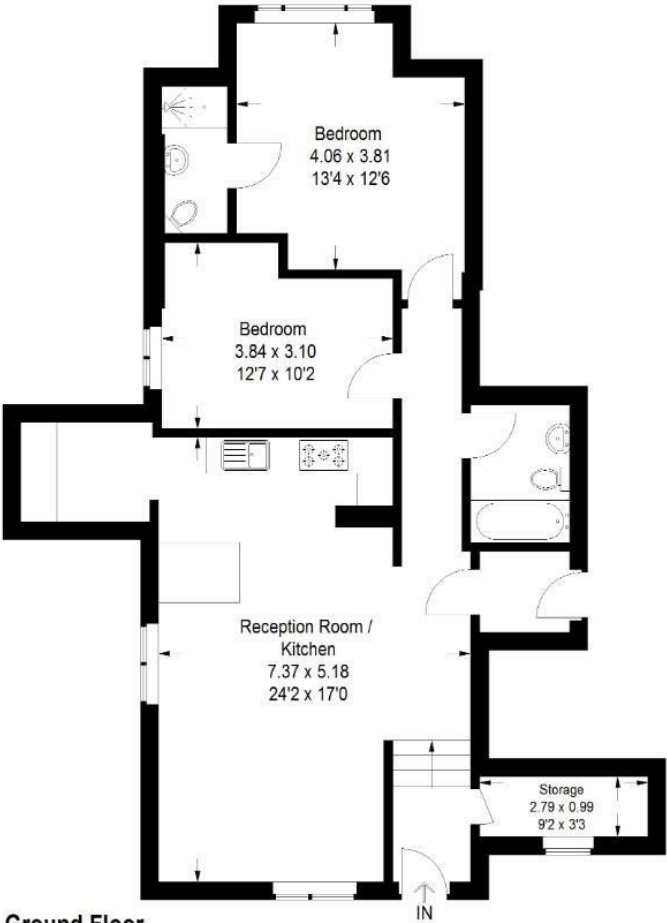
13



Floorplan

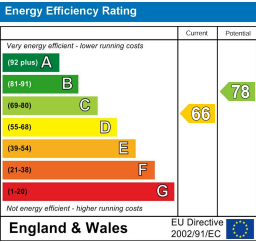
Crystal Palace Park Road, SE26

Approximate Gross Internal Area
84.2 sq m / 906 sq ft



Ground Floor

Copyright www.pedderproperty.com © 2025
These plans are for representation purposes only as defined by RICS - Code of Measuring Practice. Not drawn to Scale. Windows and door openings are approximate. Please check all dimensions, shapes and compass bearings before making any decisions reliant upon them.



Pedder Property Ltd trading as Pedder for themselves and for the vendor/landlord of this property whose agents they are, give notice that (1) these particulars do not constitute any part of an offer or contract, (2) all statements contained within these particulars are made without responsibility on the part of Pedder or the vendor/landlord, (3) whilst made in good faith, none of the statements contained within these particulars are to be relied upon as a statement of representation or fact, (4) any intending purchaser/tenant must satisfy him/herself by inspection or otherwise as to the correctness of each of the statements contained within these particulars, (5) the vendor/landlord does not make or give either Pedder or any person in their employment any authority to make or give representation or warranty whatsoever in relation to this property.