



Lymer Avenue, SE19 | £445,000

02087029333

crystalpalace@pedderproperty.com

pedder
We live local



In General

- Fourth floor
- Lift
- Garage
- No onward chain
- 22ft reception room
- Popular Dulwich Estate location
- Blank canvas
- Two double bedrooms

In Detail

A light and bright fourth floor mid-century property forming part of the popular Dulwich Estate and available for sale with no onward chain.

The accommodation is neutrally decorated throughout and presents a blank canvas for a buyer to add their own stamp. The reception room extends to 22ft and boasts original solid wood flooring and a large bank of windows overlooking surrounding greenery. A separate kitchen has the potential to be opened out to the main living area (if desired), whilst both bedrooms are double proportion and benefit from fitted storage and an inter-connecting door. Further notable points include a long lease, a recently replaced lift, meticulously maintained communal grounds, and a garage.

This leafy development is convenient for both Gipsy Hill and Crystal Palace rail links. Also, proximity to the vibrant Crystal Palace Triangle, Gipsy Parade, and West Dulwich.

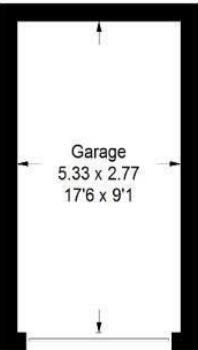
EPC: F | Council Tax Band: C | Lease: 124 years remaining | SC: £1,100 | GR: Nil | BI: £727.67



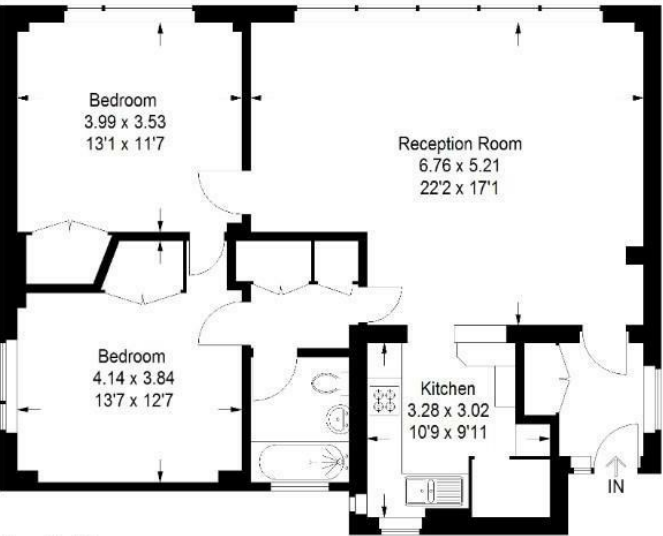
Floorplan

Grenville Court, SE19

Approximate Gross Internal Area
86.3 sq m / 929 sq ft
Garage = 15.2 sq m / 164 sq ft
Total = 101.5 sq m / 1093 sq ft



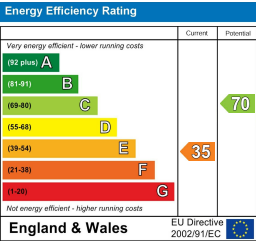
(Not Shown In Actual
Location / Orientation)



Fourth Floor

Copyright www.pedderproperty.com © 2024

These plans are for representation purposes only as defined by RICS - Code of Measuring Practice. Not drawn to Scale. Windows and door openings are approximate. Please check all dimensions, shapes and compass bearings before making any decisions reliant upon them.



Pedder Property Ltd trading as Pedder for themselves and for the vendor/landlord of this property whose agents they are, give notice that (1) these particulars do not constitute any part of an offer or contract, (2) all statements contained within these particulars are made without responsibility on the part of Pedder or the vendor/landlord, (3) whilst made in good faith, none of the statements contained within these particulars are to be relied upon as a statement of representation or fact, (4) any intending purchaser/tenant must satisfy him/herself by inspection or otherwise as to the correctness of each of the statements contained within these particulars, (5) the vendor/landlord does not make or give either Pedder or any person in their employment any authority to make or give representation or warranty whatsoever in relation to this property.