



Jasmine Grove, SE20 | £279,995

02087029333

[crystalpalace@pedderproperty.com](mailto:crystalpalace@pedderproperty.com)

**pedder**  
We live local







## In General

- Fresh and neutral decor
- No onward chain
- 18ft reception room with a Juliette balcony
- Recently upgraded bathroom
- Residents parking
- Modern separate kitchen
- Close to multiple transport links

## In Detail

A well presented two bedroom ground floor purpose built apartment tucked away at the rear of a small quiet low-rise development in Penge.

This fresh and neutral accommodation has been upgraded to include a contemporary bathroom with metro brick tiling and white sanitary ware, also a separate kitchen with ample storage space. The 18ft reception room has stripped wood flooring and a Juliette balcony with a pleasant view over the communal grounds. Further benefits include two well proportioned bedrooms, replacement double glazing throughout, residents off street parking, and no onward chain.

This location is well placed for train links including Penge East / West, Elmers End, and Anerley. Also, proximity to Crystal Palace Park and the High Street.

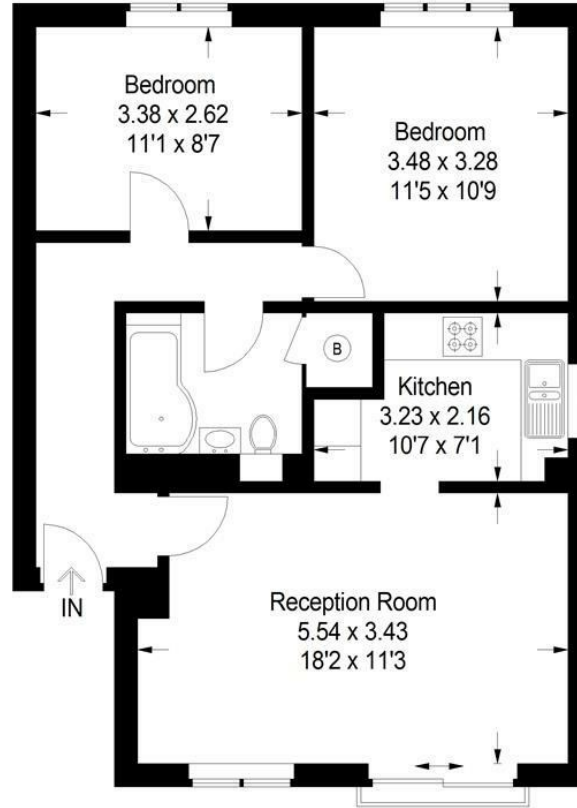
EPC: D | Council Tax Band: C | Lease: 88 years remaining | SC: £2,000 | GR: £165 | BI: £410



# Floorplan

Readman Court, SE20

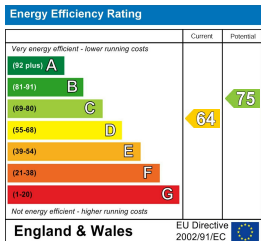
Approximate Gross Internal Area  
61.2 sq m / 659 sq ft



## Ground Floor

Copyright www.pedderproperty.com © 2024

These plans are for representation purposes only as defined by RICS - Code of Measuring Practice. Not drawn to Scale. Windows and door openings are approximate. Please check all dimensions, shapes and compass bearings before making any decisions reliant upon them.



Pedder Property Ltd trading as Pedder for themselves and for the vendor/landlord of this property whose agents they are, give notice that (1) these particulars do not constitute any part of an offer or contract, (2) all statements contained within these particulars are made without responsibility on the part of Pedder or the vendor/landlord, (3) whilst made in good faith, none of the statements contained within these particulars are to be relied upon as a statement of representation or fact, (4) any intending purchaser/tenant must satisfy him/herself by inspection or otherwise as to the correctness of each of the statements contained within these particulars, (5) the vendor/landlord does not make or give either Pedder or any person in their employment any authority to make or give representation or warranty whatsoever in relation to this property.