



Milestone Road, SE19 | £450,000

02087029333

crystalpalace@pedderproperty.com

pedder
We live local



In General

- First floor executive apartment
- 767 sq ft / 71.3 sq m
- Secure gated parking
- Central location
- 22ft 9 living space
- Modern energy efficiency
- Nearby Crystal Palace station
- No onward chain

In Detail

A light and bright modern first floor apartment centrally positioned in Crystal Palace and available for sale with no onward chain.

This contemporary low-rise development was build completed approximately ten years ago and provides a secure gated community in an enviable location. The accommodation includes two double bedrooms (one en suite) and totals 767 sq ft / 71.3 sq m, with fitted hallway storage and a separate main bathroom.

The living space is socially open-plan to a generous kitchen with integrated appliances and granite surfaces, whilst a glass brick feature window provides the perfect dining area. The 22ft living space boasts solid wood flooring and a Juliette balcony with a sunny south easterly aspect. Further benefits include modern energy efficiency and sound proofing, whilst there are well tended common parts and gated parking for one car.

Milestone Road is moments from everything that central Crystal Palace has to offer, including a dizzying number of quality restaurants and bars, an Everyman cinema, and 200 acres of parkland. Crystal Palace station is within close proximity and runs excellent services to Victoria and London Bridge, also the East London Line which runs to Shoreditch and Canada Water.

No onward chain.

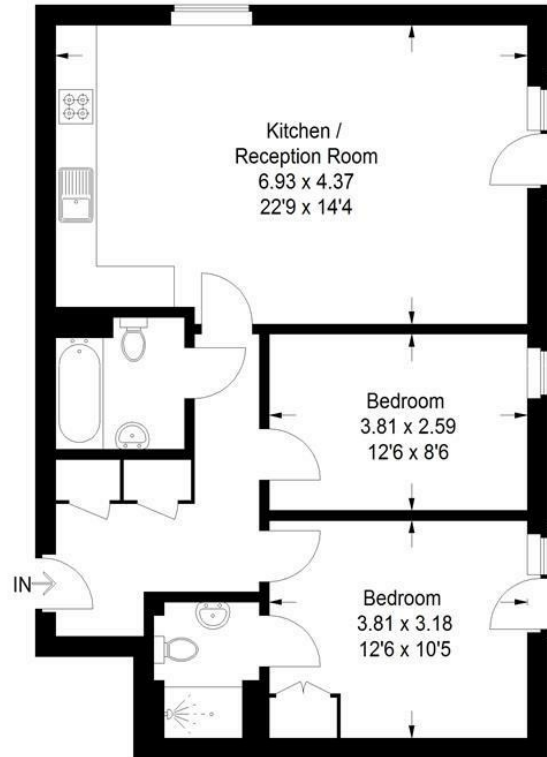
EPC: C | Council Tax Band: D | Lease: 106 years remaining | SC: £210 | GR: £250 pa | Buildings Insurance: TBC



Floorplan

Stratos Heights, SE19

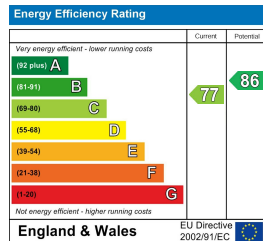
Approximate Gross Internal Area
71.3 sq m / 767 sq ft



First Floor

Copyright www.pedderproperty.com © 2024

These plans are for representation purposes only as defined by RICS - Code of Measuring Practice. Not drawn to Scale. Windows and door openings are approximate. Please check all dimensions, shapes and compass bearings before making any decisions reliant upon them.



Pedder Property Ltd trading as Pedder for themselves and for the vendor/landlord of this property whose agents they are, give notice that (1) these particulars do not constitute any part of an offer or contract, (2) all statements contained within these particulars are made without responsibility on the part of Pedder or the vendor/landlord, (3) whilst made in good faith, none of the statements contained within these particulars are to be relied upon as a statement of representation or fact, (4) any intending purchaser/tenant must satisfy him/herself by inspection or otherwise as to the correctness of each of the statements contained within these particulars, (5) the vendor/landlord does not make or give either Pedder or any person in their employment any authority to make or give representation or warranty whatsoever in relation to this property.