



Crown Dale, SE19 | Guide Price £700,000

02087029333

crystalpalace@pedderproperty.com

pedder
We live local



In General

- 1974 sq ft / 183.4 sq m
- No onward chain
- Outbuilding / work shop
- Flexible living space
- Cosmetic upgrades required

In Detail

Guide Price: £700,000 - £720,000

A substantial six bedroom double-fronted semi-detached house requiring cosmetic modernisation and available for sale with no onward chain.

The property is arranged over three floors and provides options for remodelling or extending (STP) if desired. The space can be used flexibly, depending on individual needs and totals 1974 sq ft / 183.4 sq m, plus a sizeable outbuilding for ample storage or a workshop.

Crown Dale is primarily served by both Gipsy Hill and West Norwood stations, whilst local amenities are available at Crown Point and the large green open space of Norwood Park.

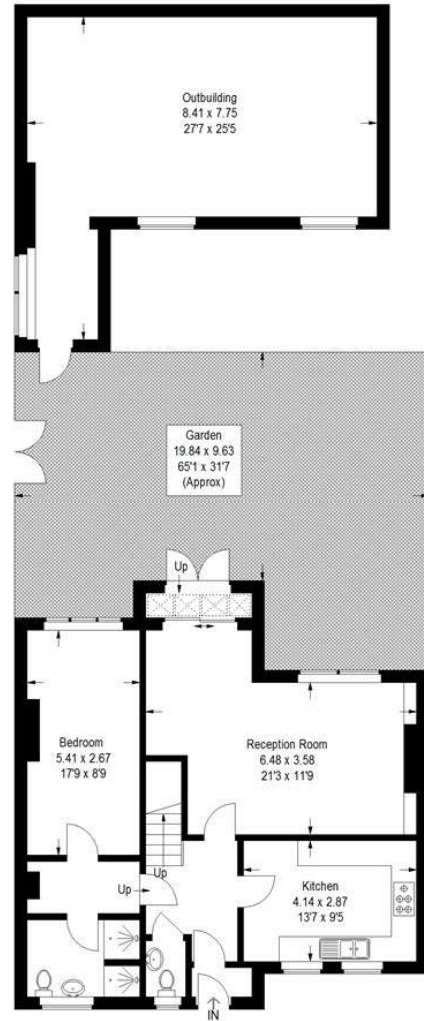
EPC: D | Council Tax Band: D



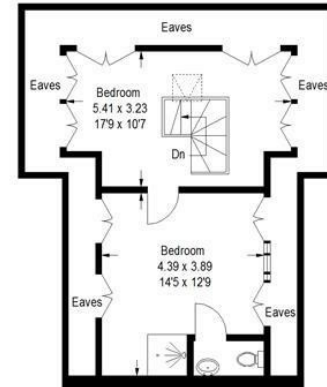
Floorplan

Crown Dale, SE19

Approximate Gross Internal Area (Excluding Eaves)
 183.4 sq m / 1974 sq ft
 Outbuilding = 45.5 sq m / 490 sq ft
 Total = 228.9 sq m / 2464 sq ft



Ground Floor

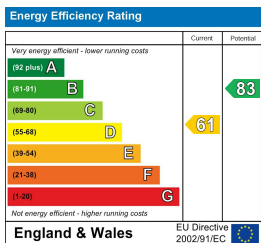


Second Floor



First Floor

Copyright www.pedderproperty.com © 2024
 These plans are for representation purposes only as defined by RICS - Code of Measuring Practice.
 Not drawn to Scale. Windows and door openings are approximate. Please check all dimensions,
 shapes and compass bearings before making any decisions reliant upon them.



Pedder Property Ltd trading as Pedder for themselves and for the vendor/landlord of this property whose agents they are, give notice that (1) these particulars do not constitute any part of an offer or contract, (2) all statements contained within these particulars are made without responsibility on the part of Pedder or the vendor/landlord, (3) whilst made in good faith, none of the statements contained within these particulars are to be relied upon as a statement of representation or fact, (4) any intending purchaser/tenant must satisfy him/herself by inspection or otherwise as to the correctness of each of the statements contained within these particulars, (5) the vendor/landlord does not make or give either Pedder or any person in their employment any authority to make or give representation or warranty whatsoever in relation to this property.