



Westow Hill, SE19 | £275,000

02087029333

crystalpalace@pedderproperty.com

pedder
We live local



In General

- No onward chain
- Central location
- Two bedrooms
- Light and bright accommodation
- Convenient for transport links

In Detail

A two bedroom first floor period conversion central located within the Crystal Palace Triangle and available for sale with no onward chain.

This light and bright property is perfectly positioned for immediate access to all of the shopping and leisure offerings at the centre of town, and could be a perfect opportunity for a first time or investor buyer alike. The accommodation comprises of a sociable open-plan kitchen and living space, fitted hallway storage, a four piece bathroom with a separate shower, and two well proportioned bedrooms.

Westow Hill is primarily served by both Gipsy Hill and Crystal Palace rail links, and is moments from 200 acres of parkland at Crystal Palace Park.

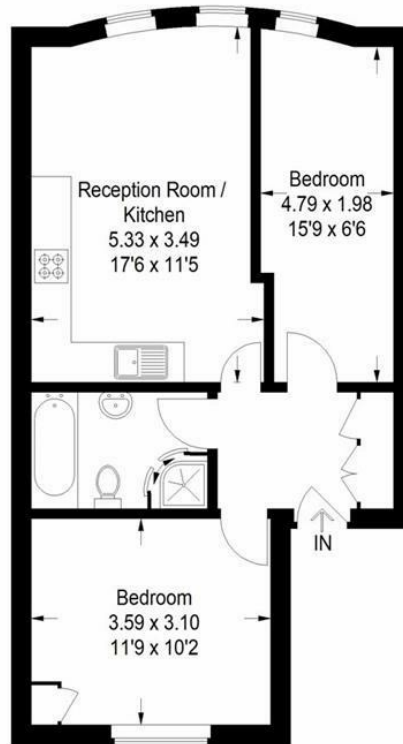
EPC: C | Council Tax Band B | Lease: 118 years remaining | SC: TBC | GR: Peppercorn | BI: TBC



Floorplan

Westow Hill, SE19

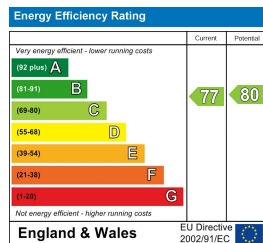
Approximate Gross Internal Area
50.6 sq m / 545 sq ft



Third Floor

Copyright www.pedderproperty.com © 2023

These plans are for representation purposes only as defined by RICS - Code of Measuring Practice. Not drawn to Scale. Windows and door openings are approximate. Please check all dimensions, shapes and compass bearings before making any decisions reliant upon them.



Pedder Property Ltd trading as Pedder for themselves and for the vendor/landlord of this property whose agents they are, give notice that (1) these particulars do not constitute any part of an offer or contract, (2) all statements contained within these particulars are made without responsibility on the part of Pedder or the vendor/landlord, (3) whilst made in good faith, none of the statements contained within these particulars are to be relied upon as a statement of representation or fact, (4) any intending purchaser/tenant must satisfy him/herself by inspection or otherwise as to the correctness of each of the statements contained within these particulars, (5) the vendor/landlord does not make or give either Pedder or any person in their employment any authority to make or give representation or warranty whatsoever in relation to this property.