



Anerley Road, SE20 | £390,000

02087029333

crystalpalace@pedderproperty.com

pedder
We live local



In General

- Three bedroom period conversion
- Large roof terrace with views
- No onward chain
- Fitted storage
- Convenient location
- Nearby multiple transport links

In Detail

A generously proportioned three double bedroom period conversion conveniently positioned nearby Anerley station and Crystal Palace Park.

This sizeable accommodation totals 869 sq ft /80.7 sq m and has been well maintained, upgraded, and enjoyed by the current owners for many years. This light and bright space is at the rear of the building and boasts far-reaching views, particularly impressive from the large roof terrace above. A considerable entrance lobby is a welcoming place to start and leads to the reception room and a separate kitchen with plenty of work and storage space. Beyond are three well appointed bedrooms, fitted storage, and a modernised bathroom. Externally the roof terrace is separately accessed and offers a fantastic area to cultivate planting, relax on pleasant days, or entertain friends and family.

Anerley Road is well placed for multiple nearby amenities, also Anerley, Crystal Palace and both Penge East and West rail links, and 200 acres of parkland.

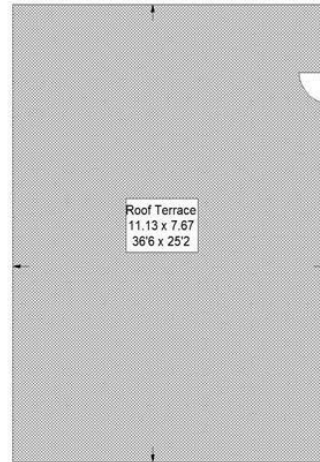
No onward chain.

EPC: E | Council Tax Band: C | Lease: 151 years remaining | SC: TBC | GR: £100 | BI: Incl in SC

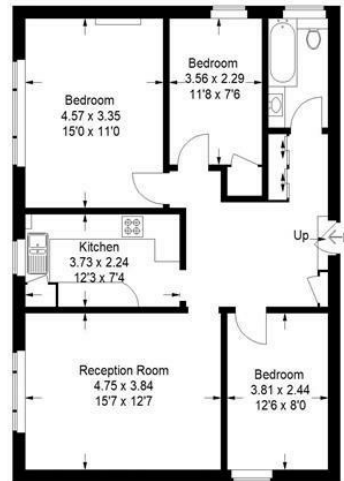


Floorplan

Lynton Court, SE20
 Approximate Gross Internal Area
 80.7 sq m / 869 sq ft

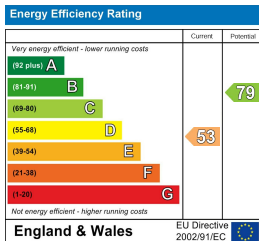


(Not Shown In Actual
 Location / Orientation)



Second Floor

Copyright www.pedderproperty.com © 2024
 These plans are for representation purposes only as defined by RICS - Code of Measuring Practice. Not drawn to Scale. Windows and door openings are approximate. Please check all dimensions, shapes and compass bearings before making any decisions reliant upon them.



Pedder Property Ltd trading as Pedder for themselves and for the vendor/landlord of this property whose agents they are, give notice that (1) these particulars do not constitute any part of an offer or contract, (2) all statements contained within these particulars are made without responsibility on the part of Pedder or the vendor/landlord, (3) whilst made in good faith, none of the statements contained within these particulars are to be relied upon as a statement of representation or fact, (4) any intending purchaser/tenant must satisfy him/herself by inspection or otherwise as to the correctness of each of the statements contained within these particulars, (5) the vendor/landlord does not make or give either Pedder or any person in their employment any authority to make or give representation or warranty whatsoever in relation to this property.