



Court Road, SE25
£2,700 PCM

0208 702 9333
pedderproperty.com

pedder



In general

- Four bedrooms
- Two bathrooms inc en-suite
- Semi-detached family home
- Driveway
- Close to Norwood Lakes & local amenities
- Close to Norwood Junction
- Available from the end of August
- Unfurnished

In detail

A delightful four bedroom, two bathroom family home located on a popular residential road, moments from Norwood Lakes to rent.

This charming family home offers spacious accommodation throughout, making it ideal for a growing family. Boasting three well-sized bedrooms (one with en-suite shower room), plus a fourth smaller bedroom, contemporary family bathroom with freestanding bath & separate shower cubicle ensuring convenience and comfort.

The living areas including the separate reception room and kitchen / dining area are expansive, with large windows that flood the ground floor with natural light, creating a bright and welcoming atmosphere. The kitchen is fully equipped with integrated appliances, offering a perfect space for cooking, dining and spending valuable time together. Access to a large decked area via sliding doors makes this perfect for family gatherings, with steps down to mature foliage and lawn to enjoy. Additionally, the property includes off-street parking and underfloor heating to the ground floor.

This home is ideally situated in a family-orientated neighbourhood, close to local amenities, schools and the transport links of Norwood Junction (London Overground), whilst the popular Triangle of central Crystal Palace is close by, making it a perfect choice for families looking for comfort, space, and a great location.

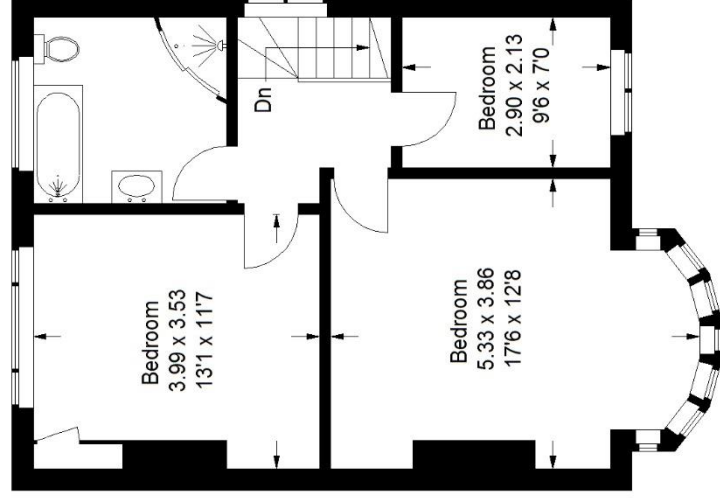
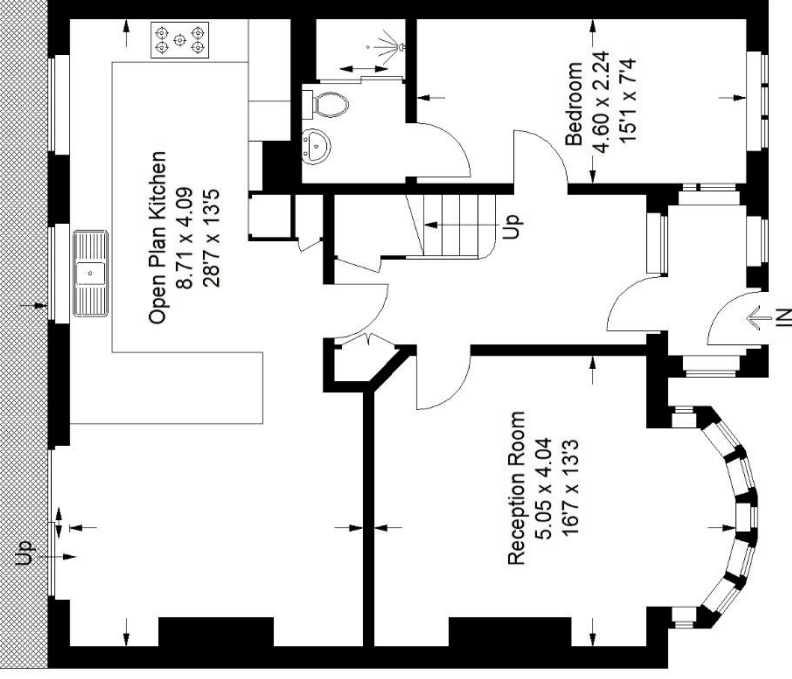
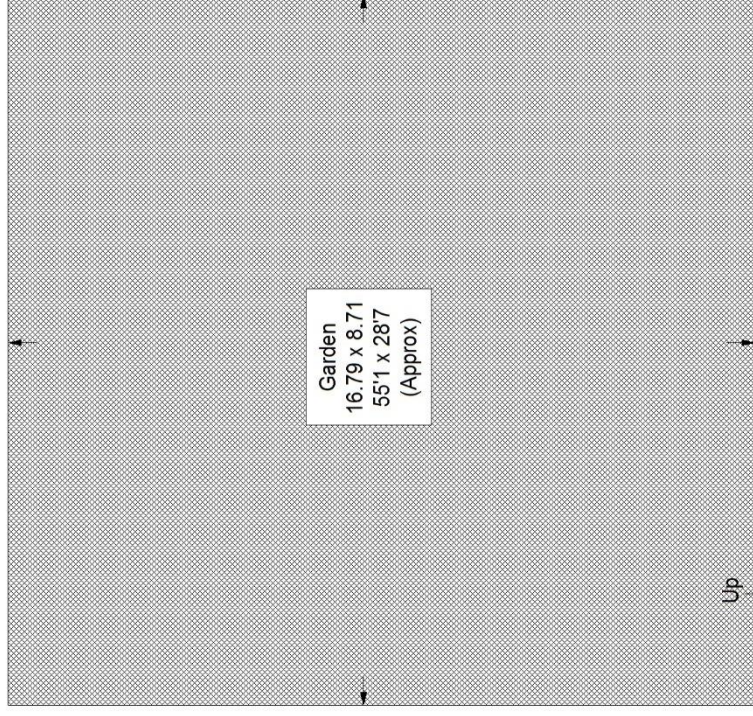
EPC: E | Council Tax: Croydon, band E | Unfurnished | Available from the end of August | HD: £623.07 | SD: £3,115.38



Floorplan

Court Road, SE25

Approximate Gross Internal Area
133.8 sq m / 1440 sq ft



Ground Floor

First Floor

Copyright www.pedderproperty.com © 2024

These plans are for representation purposes only as defined by RICS - Code of Measuring Practice. Not drawn to Scale. Windows and door openings are approximate. Please check all dimensions, shapes and compass bearings before making any decisions reliant upon them.