



Court Road, SE25
£2,850 PCM

0208 702 9333
pedderproperty.com

pedder



In general

- Four bedrooms
- Two bathrooms inc en-suite
- Semi-detached family home
- Driveway
- Close to Norwood Lakes & local amenities
- Close to Norwood Junction
- Available from the end of August
- Unfurnished

In detail

A delightful four bedroom, two bathroom family home located on a popular residential road, moments from Norwood Lakes to rent.

This charming family home offers spacious accommodation throughout, making it ideal for a growing family. Boasting three well-sized bedrooms (one with en-suite shower room), plus a fourth smaller bedroom, contemporary family bathroom with freestanding bath & separate shower cubicle ensuring convenience and comfort.

The living areas including the separate reception room and kitchen / dining area are expansive, with large windows that flood the ground floor with natural light, creating a bright and welcoming atmosphere. The kitchen is fully equipped with integrated appliances, offering a perfect space for cooking, dining and spending valuable time together. Access to a large decked area via sliding doors makes this perfect for family gatherings, with steps down to mature foliage and lawn to enjoy. Additionally, the property includes off-street parking and underfloor heating to the ground floor.

This home is ideally situated in a family-orientated neighbourhood, close to local amenities, schools and the transport links of Norwood Junction (London Overground), whilst the popular Triangle of central Crystal Palace is close by, making it a perfect choice for families looking for comfort, space, and a great location.

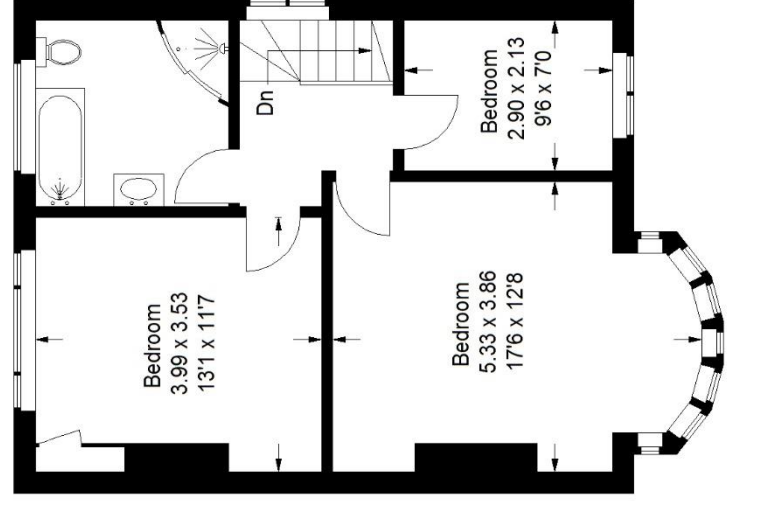
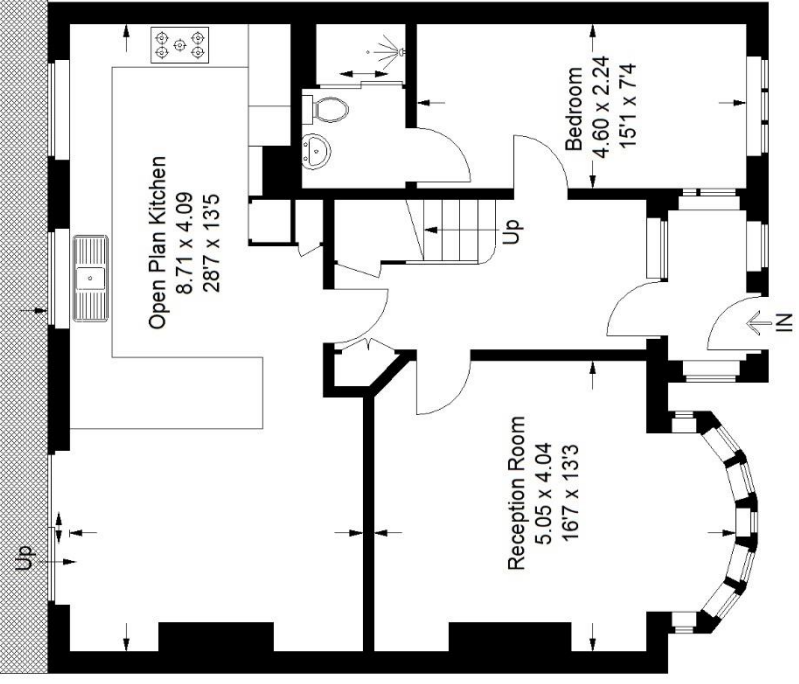
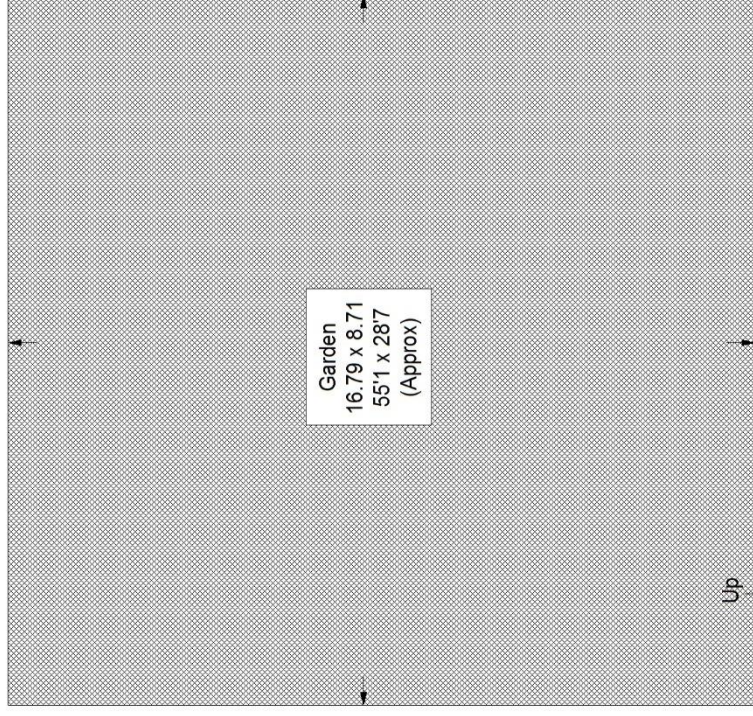
EPC: E | Council Tax: Croydon, band E | Unfurnished | Available from the end of August | HD: £657.69 | SD: £3,288.46



Floorplan

Court Road, SE25

Approximate Gross Internal Area
133.8 sq m / 1440 sq ft



Ground Floor

First Floor

Copyright www.pedderproperty.com © 2024
These plans are for representation purposes only as defined by RICS - Code of Measuring Practice.
Not drawn to Scale. Windows and door openings are approximate. Please check all dimensions,
shapes and compass bearings before making any decisions reliant upon them.

Pedder Property Ltd trading as Pedder for themselves and for the vendor/landlord of this property whose agents they are, give notice that (1) these particulars do not constitute any part of an offer or contract, (2) all statements contained within these particulars are made without responsibility on the part of Pedder or the vendor/landlord, (3) whilst made in good faith, none of the statements contained within these particulars are to be relied upon as a statement of representation or fact, (4) any intending purchaser/tenant must satisfy him/herself by inspection or otherwise as to the correctness of each of the statements contained within these particulars, (5) the vendor/landlord