



Anerley Park Road, SE20
£300,000

0208 702 9333
pedderproperty.com

pedder



In general

- Stylishly finished accommodation
- Garage
- First floor
- Bespoke kitchen
- Moments from Crystal Palace Park
- Communal garden
- Modernised bathroom

In detail

A smart one bedroom first floor purpose built apartment forming a small low rise development very close to Crystal Palace Park.

This stylish accommodation has been finished in a Nordic style with fresh white décor complimenting light wood flooring and minimalist furniture, flooded with natural light from large windows and surrounded by lush greenery. A separate kitchen is a bespoke design and neatly finished with open shelving, whilst the bathroom is fully tiled in metro brick and includes a heated towel rail and a rainfall shower. Both the bedroom and living space are at the rear of the building and offer quiet, tranquil spaces to relax and enjoy. Further benefits include fitted hallway storage, communal gardens, and a garage.

Anerley Park Road is situated between Anerley Park and Thicket Road, offering near immediate access to 200 acres of parkland and a choice of rail links which include Penge East and West, Anerley, and Crystal Palace.

EPC: C | Council Tax Band: B | Lease: TBC | SC: TBC | GR: TBC | BI: TBC



Floorplan

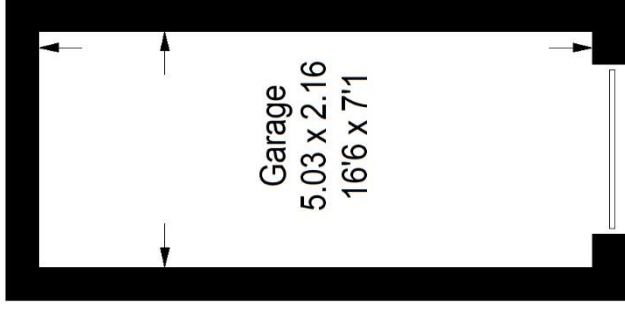
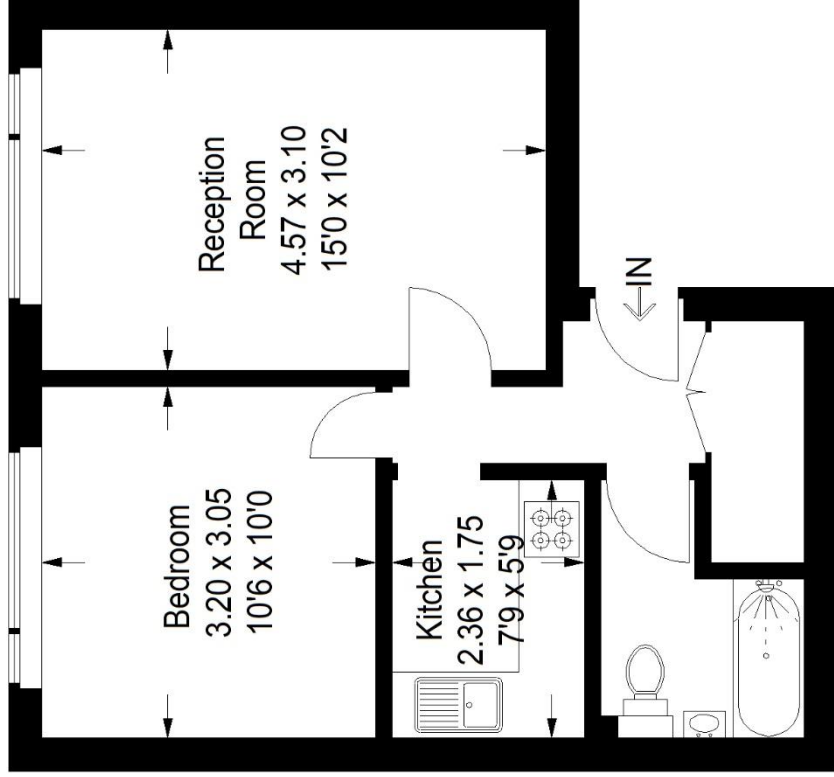
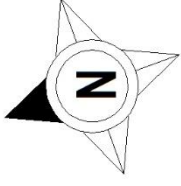
Rossal Court SE20

Approximate Gross Internal Area

38.8 sq m / 418 sq ft

Garage= 11.1 sq m / 119 sq ft

Total = 49.9 sq m / 537 sq ft



(Not Shown In Actual Location / Orientation)

First Floor

Copyright www.pedderproperty.com © 2024

These plans are for representation purposes only as defined by RICS - Code of Measuring Practice. Not drawn to Scale. Windows and door openings are approximate. Please check all dimensions, shapes and compass bearings before making any decisions reliant upon them.

Score	Energy rating	Current	Potential
92+	A		
81-91	B		
69-80	C	70 C	79 C
55-68	D		
39-54	E		
21-38	F		
1-20	G		

Pedder Property Ltd trading as Pedder for themselves and for the vendor/landlord of this property whose agents they are, give notice that (1) these particulars do not constitute any part of an offer or contract, (2) all statements contained within these particulars are made without responsibility on the part of Pedder or the vendor/landlord, (3) whilst made in good faith, none of the statements contained within these particulars are to be relied upon as a statement of representation or fact, (4) any intending purchaser/tenant must satisfy him/herself by inspection or otherwise as to the correctness of each of the statements contained within these particulars, (5) the vendor/landlord does not make or give either Pedder or any person in their employment any authority to make or give representation or warranty whatsoever in relation to this property.