



Harold Road, SE19  
£325,000

0208 702 9333  
[pedderproperty.com](http://pedderproperty.com)

**pedder**







# In general

- Highly regarded location
- Beautifully finished throughout
- A large communal rear garden
- A share of the freehold
- Light and bright accommodation
- Modern kitchen and shower room

# In detail

A beautifully presented light and bright first floor period conversion forming part of an attractive Victorian build on a highly regarded road moments from Central Crystal Palace.

This warm and inviting property has been exceptionally well maintained by the current owners to offer a fresh, well finished, and homely retreat. Noteworthy features include solid wood flooring, a contemporary high-gloss kitchen, large windows which allow for plenty of natural light, a well proportioned bedroom, a high specification shower room, a substantial communal rear garden with a southerly aspect, and a share of the freehold.

This location works well for access to Gipsy Hill station, the green opposite, and bars, restaurants and shopping at the Triangle.

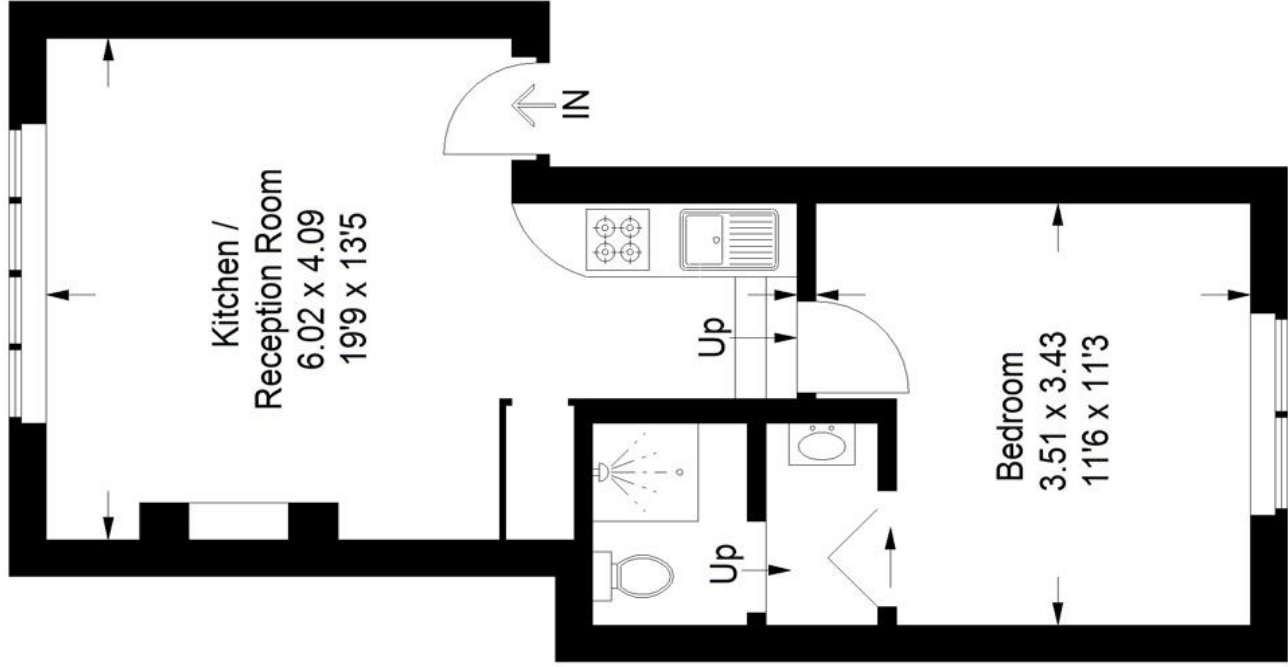
EPC: F | Council Tax Band: B | Lease: 958 Years Remaining | SC: £1,800 pa | GR: £0 | BI: Incl. in SC



# Floorplan

## Harold Road, SE19

Approximate Gross Internal Area  
35.6 sq m / 383 sq ft



### First Floor

Copyright [www.pedderproperty.com](http://www.pedderproperty.com) © 2024  
These plans are for representation purposes only as defined by RICS - Code of Measuring Practice. Not drawn to Scale. Windows and door openings are approximate. Please check all dimensions, shapes and compass bearings before making any decisions reliant upon them.

Score	Energy rating	Current	Potential
92+	A		
81-91	B		
69-80	C		
55-68	D		68 D
39-54	E		
21-38	F	26 F	
1-20	G		

Pedder Property Ltd trading as Pedder for themselves and for the vendor/landlord of this property whose agents they are, give notice that (1) these particulars do not constitute any part of an offer or contract, (2) all statements contained within these particulars are made without responsibility on the part of Pedder or the vendor/landlord, (3) whilst made in good faith, none of the statements contained within these particulars are to be relied upon as a statement of representation or fact, (4) any intending purchaser/tenant must satisfy him/herself by inspection or otherwise as to the correctness of each of the statements contained within these particulars, (5) the vendor/landlord does not make or give either Pedder or any person in their employment any authority to make or give representation or warranty whatsoever in relation to this property.