



Crystal Palace Park Road, SE26  
Guide Price £385,000-£400,000

0208 702 9333  
[pedderproperty.com](http://pedderproperty.com)

**pedder**



# In general

- Ground floor apartment
- Private parking
- Excellent transport links
- Close to local amenities
- Developed in 2020
- Private garden

# In detail

A unique one-bedroom ground floor garden apartment amongst the vibrant community of Crystal Palace.

This beautiful apartment features high-end finishes and modern design elements throughout including assurance for all residents with a high tech security system. The stylish accommodation includes a Nest heating controllers, high speed broadband, a video entry door system, private parking and its very own garden settled by lush greenery. The kitchen is a standout feature with Handleless soft close units including all built in appliances such as Bosch hob and electric oven, stone worktops and wood effect ceramic tiling throughout. The bedroom offers a peaceful retreat with Italian Composed Swing Wardrobes, smart Aluminium windows and Recessed Spotlights throughout. This luxury apartment was developed in 2020 offering easy access to key transport links including access to either Penge East / West, Anerley or Crystal Palace rail links, as well as the amenities of the High Street, central Triangle, and 200 acres of parkland on the door step.

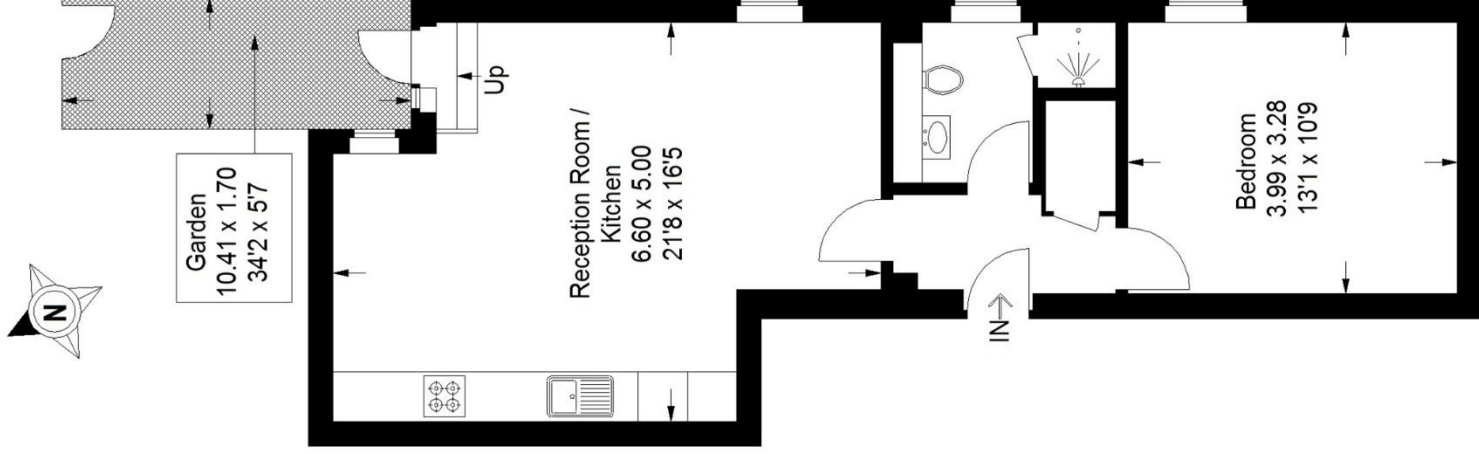
EPC: TBC | Council Tax Band: D | Lease: 242 Years Remaining | SC: £2,031.08 pa | GR: £0 | BI: £0



# Floorplan

## Crystal Palace Park Road, SE26

Approximate Gross Internal Area  
50.8 sq m / 547 sq ft



### Ground Floor

Copyright www.pedderproperty.com © 2024  
These plans are for representation purposes only as defined by RICS - Code of Measuring Practice. Not drawn to Scale. Windows and door openings are approximate. Please check all dimensions, shapes and compass bearings before making any decisions reliant upon them.

Pedder Property Ltd trading as Pedder for themselves and for the vendor/landlord of this property whose agents they are, give notice that (1) these particulars do not constitute any part of an offer or contract, (2) all statements contained within these particulars are made without responsibility on the part of Pedder or the vendor/landlord, (3) whilst made in good faith, none of the statements contained within these particulars are to be relied upon as a statement of representation or fact, (4) any intending purchaser/tenant must satisfy him/herself by inspection or otherwise as to the correctness of each of the statements contained within these particulars, (5) the vendor/landlord does not make or give either Pedder or any person in their employment any authority to make or give representation or warranty whatsoever in relation to this property.