



Downsview Road, SE19  
£3,750 pcm

0208 702 9333  
[pedderproperty.com](http://pedderproperty.com)

**pedder**



# In general

- 1637 sq ft / 140.1 sq m
- Five bedroom detached house
- Fully refurbished
- En suite shower room
- Off street parking and EV charge point
- Leafy residential road

# In detail

A newly refurbished four bedroom double-fronted detached house positioned on a wide, leafy residential road in Crystal Palace.

This generously proportioned property offers balanced accommodation arranged over two floors and is an ideal long-term opportunity for a young or growing family to immediately enjoy. A fresh and inviting blank canvas, the ground floor comprises of three reception spaces including a double reception which extends to 26 ft and boasts stripped wood flooring, a sunny shuttered bay, and double doors to outside. The kitchen has granite surfaces and room to dine, whilst there is also a handy WC on this level. Upstairs there is a light and bright landing with a skylight and access to a sizeable and fully insulated loft space, whilst all four bedrooms are well proportioned with brand new platinum grey carpets, the main including an en suite shower room and fitted storage. A fully tiled family bathroom has a heated towel rail and fresh white sanitary ware, also a separate utility cupboard for keeping laundry out of the way. Externally there is a west-facing lawned rear garden with an elevated patio seating area which enjoys semi-rural green views. The front of the house has off street parking for two / three cars, an EV charge point, and access to a storage shed which runs the length of the property.

Downsview Road is well placed for a number of green open spaces, the popular Downsview Primary school and Harris Academy, and amenities of Crown Point. The area is primarily served by Gipsy Hill and Norbury rail stations, also the X68 bus route to Brixton tube.

EPC: D | Council Tax Band: F | Available now | Unfurnished | HD: £865.38 | SD £4,326.92



# Floorplan

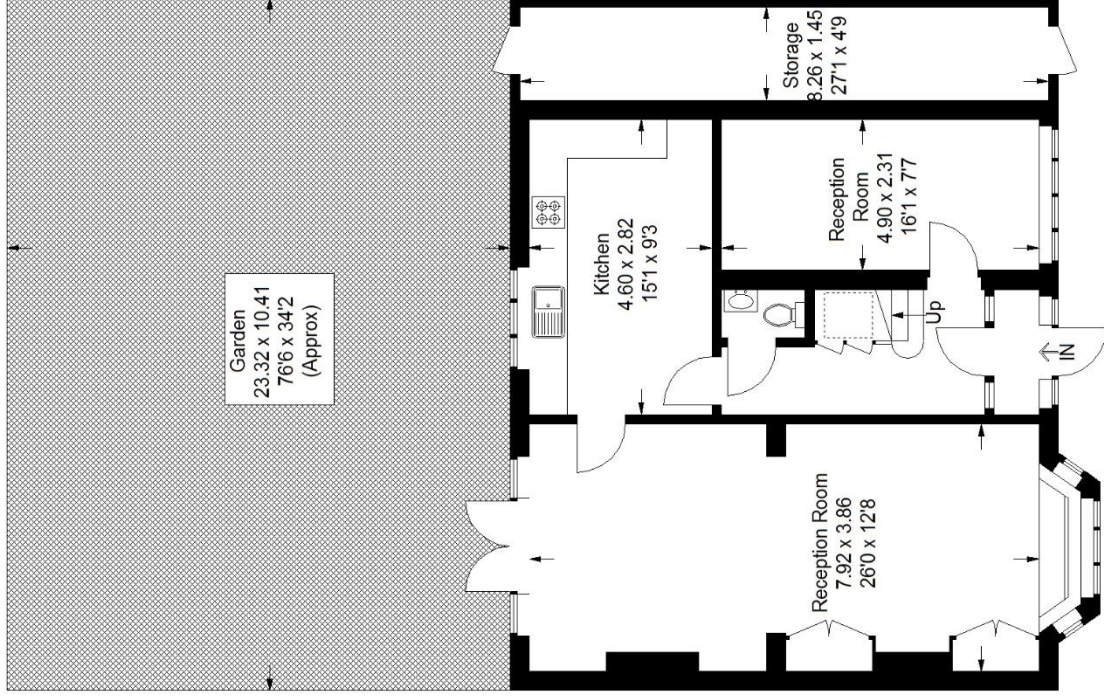
## Downsview Road, SE19

Approximate Gross Internal Area

140.1 sq m / 1508 sq ft

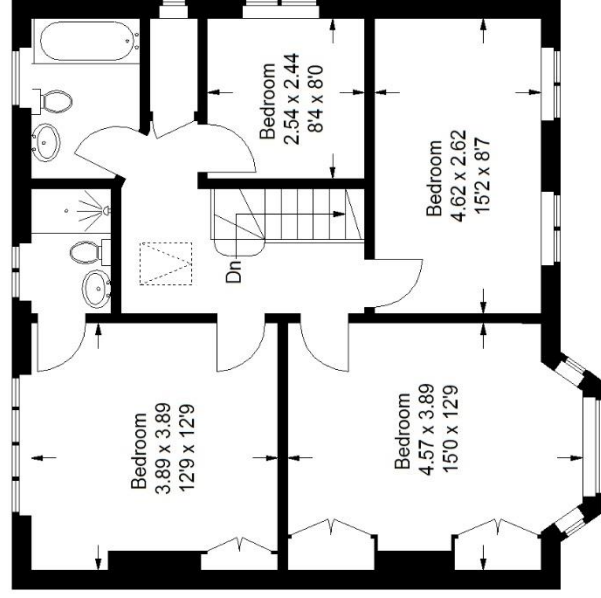
Storage = 12.0 sq m / 129 sq ft

Total = 152.1 sq m / 1637 sq ft



**Ground Floor**

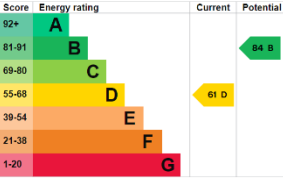
☐ = Reduced headroom below 1.5 m / 5'0



**First Floor**

Copyright www.pedderproperty.com © 2024

These plans are for representation purposes only as defined by RICS - Code of Measuring Practice. Not drawn to Scale. Windows and door openings are approximate. Please check all dimensions, shapes and compass bearings before making any decisions reliant upon them.



Pedder Property Ltd trading as Pedder for themselves and for the vendor/landlord of this property whose agents they are, give notice that (1) these particulars do not constitute any part of an offer or contract, (2) all statements contained within these particulars are made without responsibility on the part of Pedder or the vendor/landlord, (3) whilst made in good faith, none of the statements contained within these particulars are to be relied upon as a statement of representation or fact, (4) any intending purchaser/tenant must satisfy him/herself by inspection or otherwise as to the correctness of each of the statements contained within these particulars, (5) the vendor/landlord