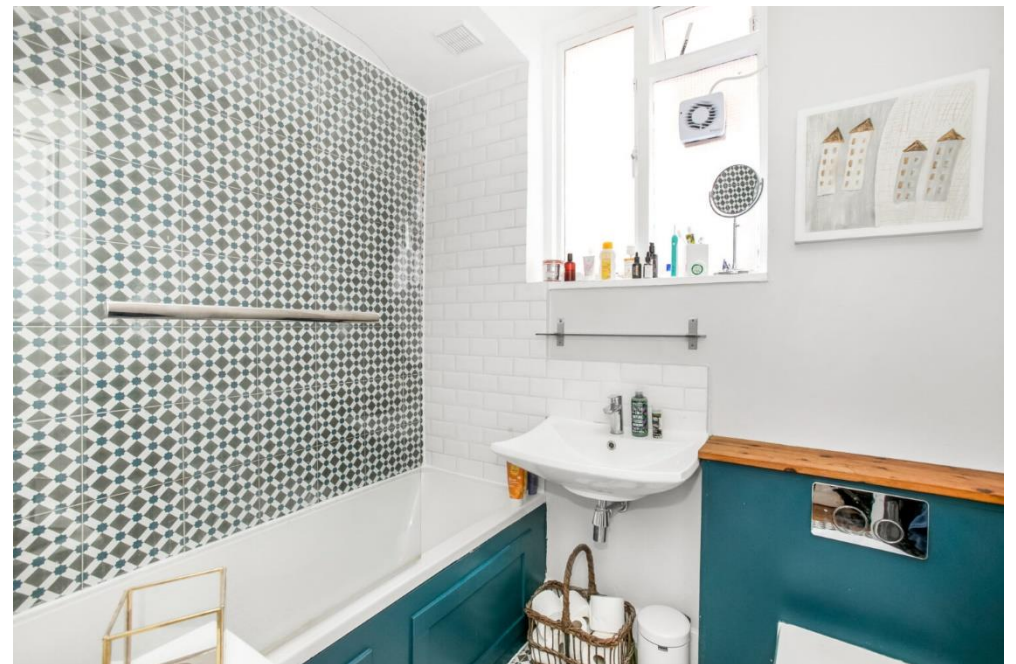




Harold Road, SE19
£1,600pcm

0208 702 9333
pedderproperty.com

pedder



In general

- Generously proportioned
- Characterful features
- Nearby central Crystal Palace
- Ground floor
- Large private cellar
- Light and bright reception room
- Communal grounds to front
- Unfurnished
- Available immediately

In detail

A characterful and generously proportioned one bedroom ground floor period conversion positioned on a highly sought after road moments from central Crystal Palace.

This larger than average property forms part of an attractive brick-fronted Victorian build and would ideally suit a single or professional couple seeking a well-placed and comfortable long-term home. Points to note include a wealth of features such as high ceilings, stained glass windows and stripped wood flooring, as well as a modern kitchen with integrated appliances and an induction hob, a 19ft 5 reception room which benefits from a large box bay to allow for plenty of natural light, and a large cellar which makes for a great utility / storage space. Externally there is a mature front communal garden to make the most of sunny days.

Harold Road, SE19 is a leafy residential location made up of similar large period properties and offers access to Gipsy Hill rail links and a wealth of shopping and leisure amenities at the Triangle.

The green open space of Upper Norwood Recreation Ground is close by which includes Tennis courts and in addition Westow Park. The ideal rental for a couple seeking a charming home with character.

EPC: D | Council Tax: Croydon, band C | HD: £369.23 | SD: £1,846.15 | Available Immediately | Unfurnished



Floorplan

Harold Road, SE19

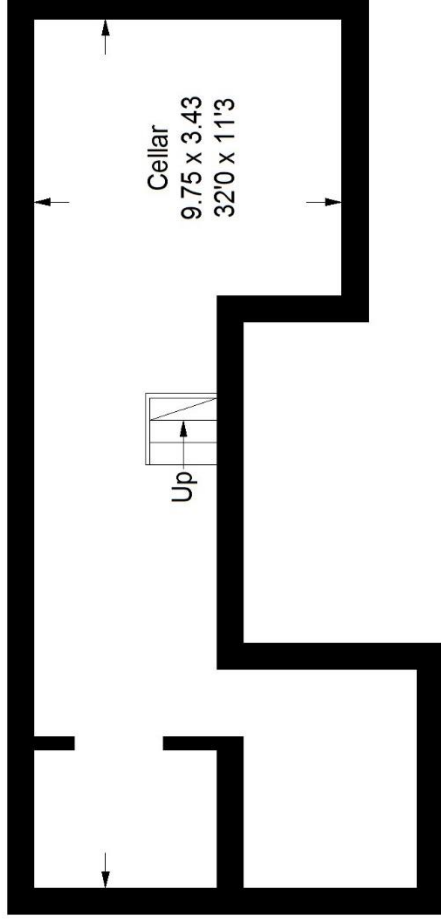


Approximate Gross Internal Area

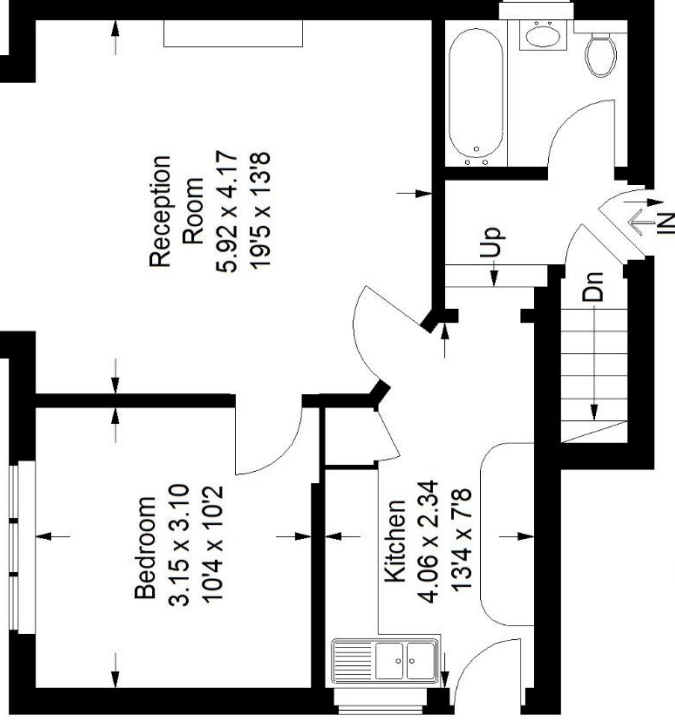
Basement = 29.8 sq m / 321 sq ft

Ground Floor = 51.5 sq m / 554 sq ft

Total = 81.3 sq m / 875 sq ft



Basement



Ground Floor

Copyright www.pedderproperty.com © 2020

These plans are for representation purposes only as defined by RICS - Code of Measuring Practice. Not drawn to Scale. Windows and door openings are approximate. Please check all dimensions, shapes and compass bearings before making any decisions reliant upon them.