



Waldegrave Road, SE19  
£325,000

0208 702 9333  
[pedderproperty.com](http://pedderproperty.com)

pedder



# In general

- A share of the freehold
- No onward chain
- Central location
- High ceilings
- High specification finish
- Sunny reception room
- Moments from Crystal Palace station

# In detail

A light and bright one bedroom ground floor period conversion exceptionally well positioned for Crystal Palace station and the centre of town.

This neutrally decorated apartment boasts high ceilings and premium fittings, and could make for a hassle-free first time or investment purchase. The reception room benefits from a large double-glazed bay window (with a southerly aspect) and is open to a modern kitchen with Neff integrated appliances and granite surfaces. The space incorporates contemporary wall-mounted radiators to make the most of the whole floor area and offers a relaxing place to unwind at the end of the day. The bedroom is located at the rear of the building and is a quiet, calm space (with fitted wardrobe storage), whilst the bathroom includes superior stainless fixtures, a P-shaped bath, and rainfall shower. Further benefits include a share of the freehold and no onward chain.

Waldegrave Road is accessed via Belvedere Road and is very well placed for rail links to central and East London, as well as Crystal Palace Park and a wealth of shopping and leisure options which are moments away at the Triangle.

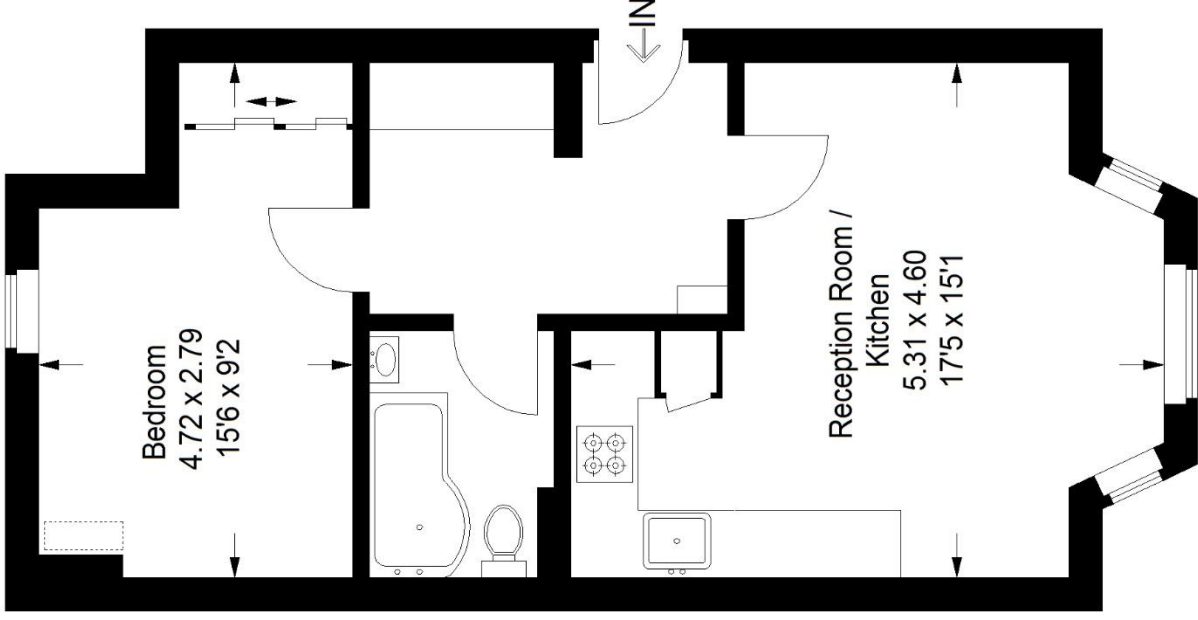
EPC: TBC | Council Tax Band: B | Lease: 987 years remaining | SC: £2,364 | GR: n/a | BI: TBC




# Floorplan

## Waldegrave Road, SE19

Approximate Gross Internal Area  
42.9 sq m / 462 sq ft



### Raised First Floor

 = Reduced headroom below 1.5 m / 5'0

Copyright [www.pedderproperty.com](http://www.pedderproperty.com) © 2024  
These plans are for representation purposes only as defined by RICS - Code of Measuring Practice. Not drawn to Scale. Windows and door openings are approximate. Please check all dimensions, shapes and compass bearings before making any decisions reliant upon them.