



Seymour Terrace, SE20
£1,400pcm

0208 702 9333
pedderproperty.com

pedder



In general

- Quiet location
- Generous loft space
- Convenient for parkland and transport links
- Elevated views
- Available end of June
- Offered unfurnished

In detail

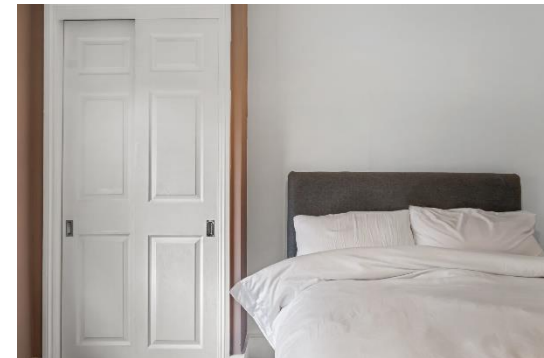
A cosy but well-proportioned and inviting top floor one bedroom conversion quietly positioned within a small terrace of properties next to Betts Park in Anerley to rent.

This light and bright space boasts sash windows with elevated views front and rear, a socially open-plan kitchen / living room, bedroom with fitted storage and direct access to a generous loft space via loft ladder.

Seymour Terrace, SE20 is well placed for access to Crystal Anerley, South Norwood and both Penge East & West train stations and the local amenities of Anerley Road and Croydon Road.

The perfect rental for a single professional.

EPC: D | Council Tax: Bromley, band B | Offered unfurnished | Available end of June | HD: £323.07 | SD: £1,615.38



Floorplan

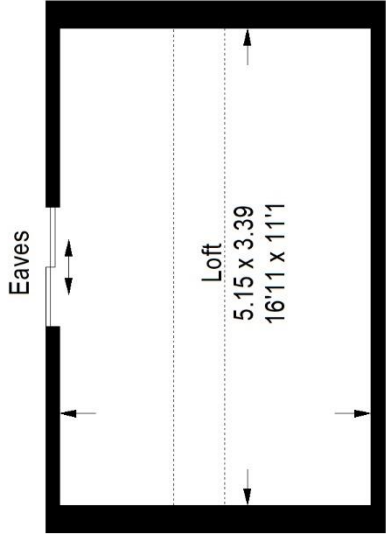
Seymore Terrace, SE20

Approximate Gross Internal Area

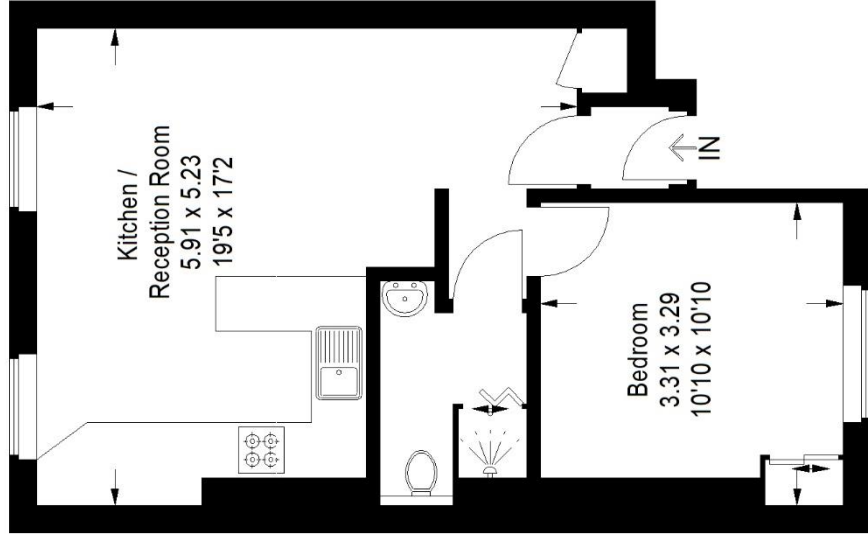
Second Floor = 41.9 sq m / 451 sq ft

Loft = 17.7 sq m / 191 sq ft

Total = 59.6 sq m / 642 sq ft



Loft



Second Floor

= Reduced headroom below 1.5 m / 5'0

Copyright www.pedderproperty.com © 2023
 These plans are for representation purposes only as defined by RICS - Code of Measuring Practice. Not drawn to Scale. Windows and door openings are approximate. Please check all dimensions, shapes and compass bearings before making any decisions reliant upon them.

Score	Energy rating	Current	Potential
92+	A		
81-91	B		
69-80	C		
55-68	D	57 D	66 D
39-54	E		
21-38	F		
1-20	G		

Pedder Property Ltd trading as Pedder for themselves and for the vendor/landlord of this property whose agents they are, give notice that (1) these particulars do not constitute any part of an offer or contract, (2) all statements contained within these particulars are made without responsibility on the part of Pedder or the vendor/landlord, (3) whilst made in good faith, none of the statements contained within these particulars are to be relied upon as a statement of representation or fact, (4) any intending purchaser/tenant must satisfy him/herself by inspection or otherwise as to the correctness of each of the statements contained within these particulars, (5) the vendor/landlord does not make or give either Pedder or any person in their employment any authority to make or give representation or warranty whatsoever in relation to this property.