



Camden Hill Road, SE19
£1,650pcm

0208 702 9333
pedderproperty.com

pedder



In general

- One double bedroom
- Period conversion
- Private garden
- Idea location
- Convenient for transport links
- Available from mid-March
- Flexible furnishings

In detail

A well-presented one bedroom period conversion with direct access to a spacious private rear garden in central Crystal Palace to rent.

Finished to a high standard throughout and comprises modern eat-in kitchen, separate reception room with direct access to the landscaped rear garden.

Further benefits include double bedroom and contemporary bathroom with shower cubicle.

Camden Hill Road, SE19 is located a short distance from the popular Crystal Palace Triangle boasting an array of boutique shops, bars, cafes and eateries as well as other local amenities.

The property is also ideally positioned for the transport links of Gipsy Hill and Crystal Palace Overground stations offering convenient links into central London.

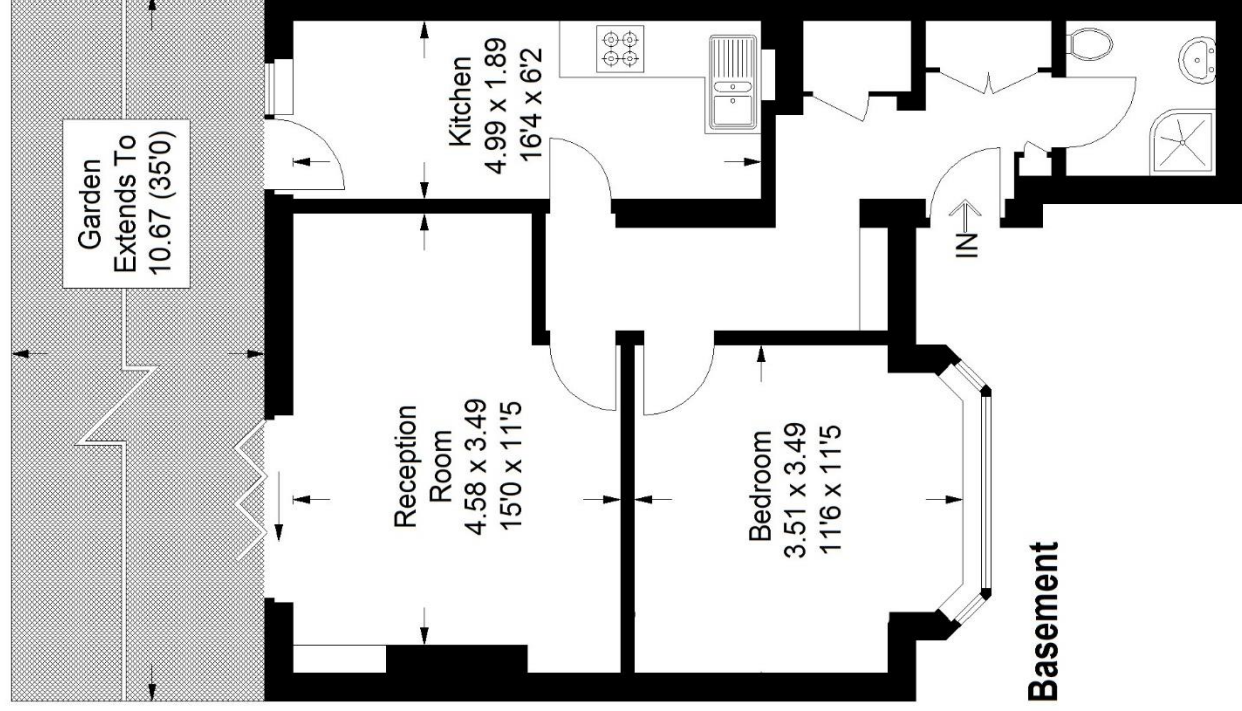
EPC: C | Council Tax Band: Lambeth, C | HD: £380.76 | SD: £1,903.84 | Available mid-March | Flexible furnishings



Floorplan

Camden Hill, SE19

Approximate Gross Internal Area
53.0 sq m / 570 sq ft



Copyright www.pedderproperty.com © 2022
These plans are for representation purposes only
as defined by RICS - Code of Measuring Practice.
Not drawn to Scale. Windows and door openings
are approximate. Please check all dimensions,
shapes and compass bearings before making
any decisions reliant upon them.