



Wedgwood Way, SE19  
£600,000

0208 702 9333  
[pedderproperty.com](http://pedderproperty.com)

**pedder**







# In general

- Three bedroom link-detached
- No onward chain
- Beautifully cultivated gardens
- Garage and off street parking
- Quiet cul de sac
- 19ft kitchen / diner

# In detail

A charming three bedroom mid-century link-detached house forming part of a small quiet cul de sac in Crystal Palace, available for sale with no onward chain.

This immaculately presented property would suit a young or growing family seeking the next step on a community-orientated residential street. The accommodation is arranged over two levels and briefly comprises of a spacious 19ft kitchen / diner, WC, and light and bright reception room on the ground floor. Upstairs there are three bedrooms (with lots of fitted storage) and a bathroom with white sanitary ware. One of the stand-out features of this house are the beautifully cultivated front and rear gardens, the rear boasting a southerly aspect and surrounded by lush greenery, including a patio seating area and a myriad of mature planting to enjoy throughout the year. Further points to note include off street parking and a garage which offers potential for conversion (STP) to an extra living space / home office.

Wedgwood Way is located just off of Beulah Hill and is well placed for Downsview Primary School and the amenities at Crown Point. The closest rail links are at West Norwood and Gipsy Hill, although the X68 bus route also runs along the road for Brixton underground.

EPC: D | Council Tax Band: E



# Floorplan

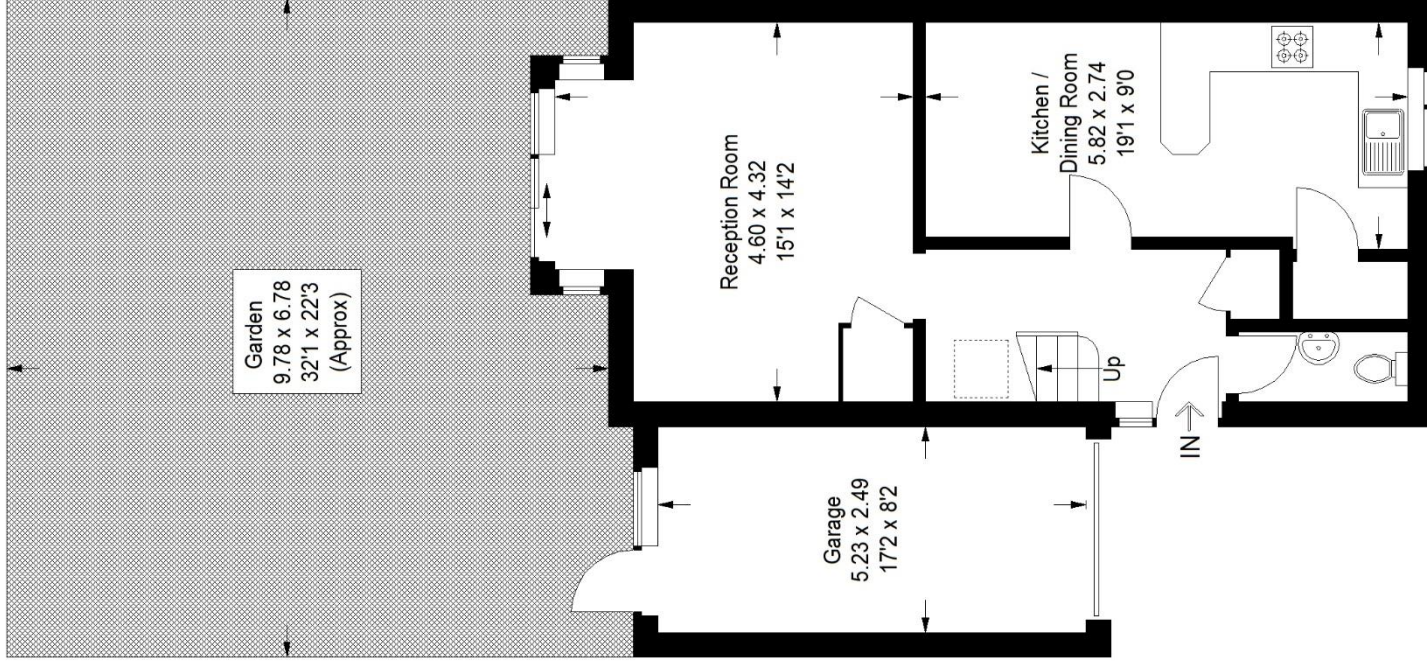
## Wedgewood Way, SE19

Approximate Gross Internal Area

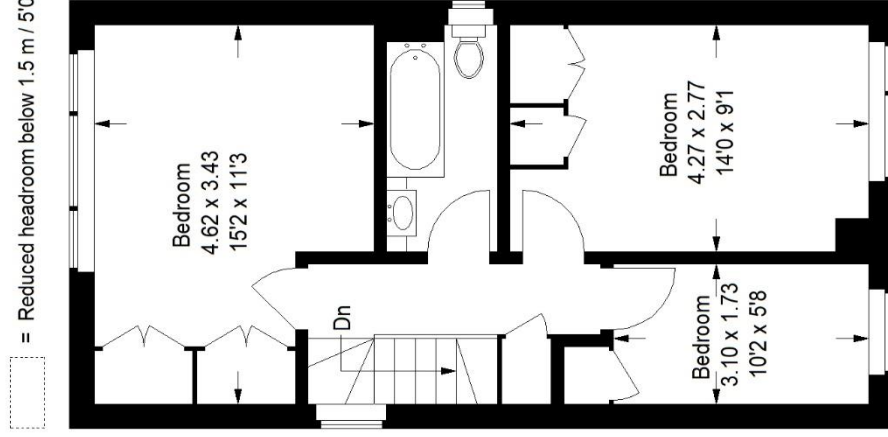
89.1 sq m / 959 sq ft

Garage = 13.4 sq m / 144 sq ft

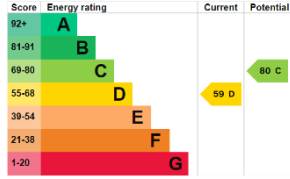
Total = 102.5 sq m / 1103 sq ft



**Ground Floor**



**First Floor**



Pedder Property Ltd trading as Pedder for themselves and for the vendor/landlord of this property whose agents they are, give notice that (1) these particulars do not constitute any part of an offer or contract, (2) all statements contained within these particulars are made without responsibility on the part of Pedder or the vendor/landlord, (3) whilst made in good faith, none of the statements contained within these particulars are to be relied upon as a statement of representation or fact, (4) any intending purchaser/tenant must satisfy him/herself by inspection or otherwise as to the correctness of each of the statements contained within these particulars, (5) the vendor/landlord

Copyright [www.pedderproperty.com](http://www.pedderproperty.com) © 2024

These plans are for representation purposes only as defined by RICS - Code of Measuring Practice. Not drawn to Scale. Windows and door openings are approximate. Please check all dimensions, shapes and compass bearings before making any decisions reliant upon them.