



Waldegrave Road, SE19  
£1,750 PCM

0208 702 9333  
[pedderproperty.com](http://pedderproperty.com)

pedder





# In general

- Two bedrooms
- Open plan kitchen / living room
- Balcony to front
- Close to Crystal Palace train station & local amenities
- Available early June
- Unfurnished

# In detail

A very well located and modern two bedroom second floor apartment with balcony to rent in Crystal Palace.

Comprises open plan kitchen with integrated appliances including dishwasher, living area with direct access through bi-folding doors to a south facing balcony, double bedroom (main with fitted storage) with additional second double bedroom (ideal study / guest room) and a contemporary bathroom with shower above bath. Complete with solid oak flooring, granite worktops and intercom entry phone.

Waldegrave Road, SE19 is ideally located to both the Crystal Palace train station and the array of amenities, shops, restaurants and bars of The Triangle. The vast open space of Crystal Palace Park is within a short distance also.

The perfect rental for a couple seeking the extra living space in a prime location.

EPC: D | Council Tax: Bromley, C | HD: £403.84 | SD: £2,019.23 | Offered unfurnished | Available early June

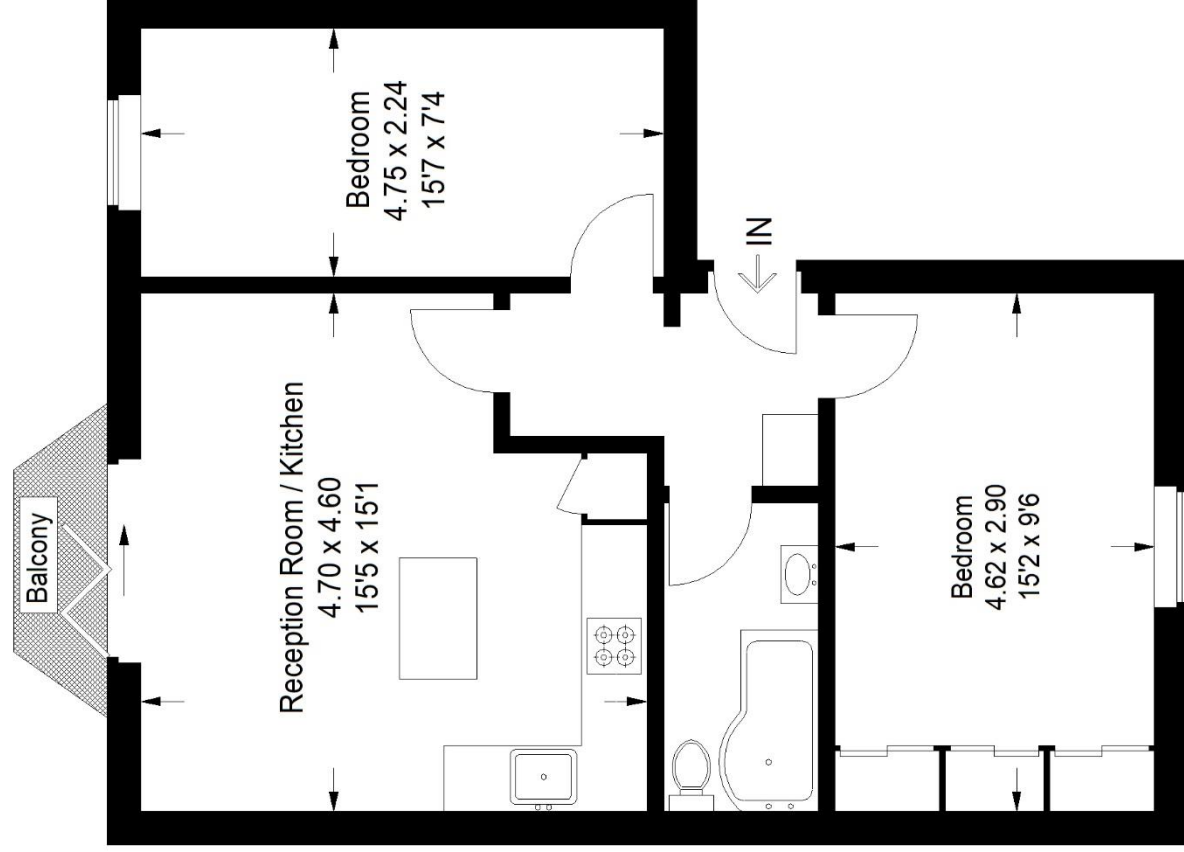


# Floorplan

## Waldegrave Road, SE19

Approximate Gross Internal Area

55.2 sq m / 594 sq ft



## Second Floor

Copyright [www.pedderproperty.com](http://www.pedderproperty.com) © 2023  
These plans are for representation purposes only as defined by RICS - Code of Measuring Practice. Not drawn to Scale. Windows and door openings are approximate. Please check all dimensions, shapes and compass bearings before making any decisions reliant upon them.