



Burlington Road, CR7
£500,000

0208 702 9333
pedderproperty.com

pedder



In general

- Edwardian semi-detached house
- Three double bedrooms
- Separate WC
- Two reception rooms
- Period features
- Generous rear garden
- Quiet location

In detail

A beautifully presented three double bedroom Edwardian semi-detached house forming part of a quiet cul de sac nearby Grangewood Park.

This characterful property has been modernised by the current owners to create tastefully finished accommodation and thoughtfully chosen fittings, that offer a warm and inviting space to call home. The attractive external façade, teal front door, and shuttered windows denote a quality market offering that stands out and leads to areas that are equally impressive inside. There are two separate reception rooms which both have feature fireplaces and benefit from underfloor insulation- the front with a sunny box bay and stripped wood flooring, and double doors to outside at the rear. The kitchen has been well designed to include plenty of storage and features quartz surfaces and contemporary hexagonal tiling, whilst there is also a handy separate utility area beyond. The bathroom offers a calm and relaxing retreat with premium fittings and a heated towel rail. All three bedrooms are well proportioned with period fireplaces, two with fitted storage, and a 16ft main bedroom with three large windows and stripped wood flooring. The attic space is generous and lends to conversion if desired (STP).

Externally there is a 65ft lawned rear garden with a patio seating area and access via a side return.

Burlington Road is a leafy residential street which is served by Norwood Junction & Thornton Heath rail links boasting excellent connections to central London with Norwood Junction offering fast train options to London Bridge, also within proximity of prominent local schools, and central Crystal Palace with an abundance of shopping and leisure options.

A highly recommended viewing to appreciate the standard and finish.

EPC: E | Council Tax Band: D



Floorplan

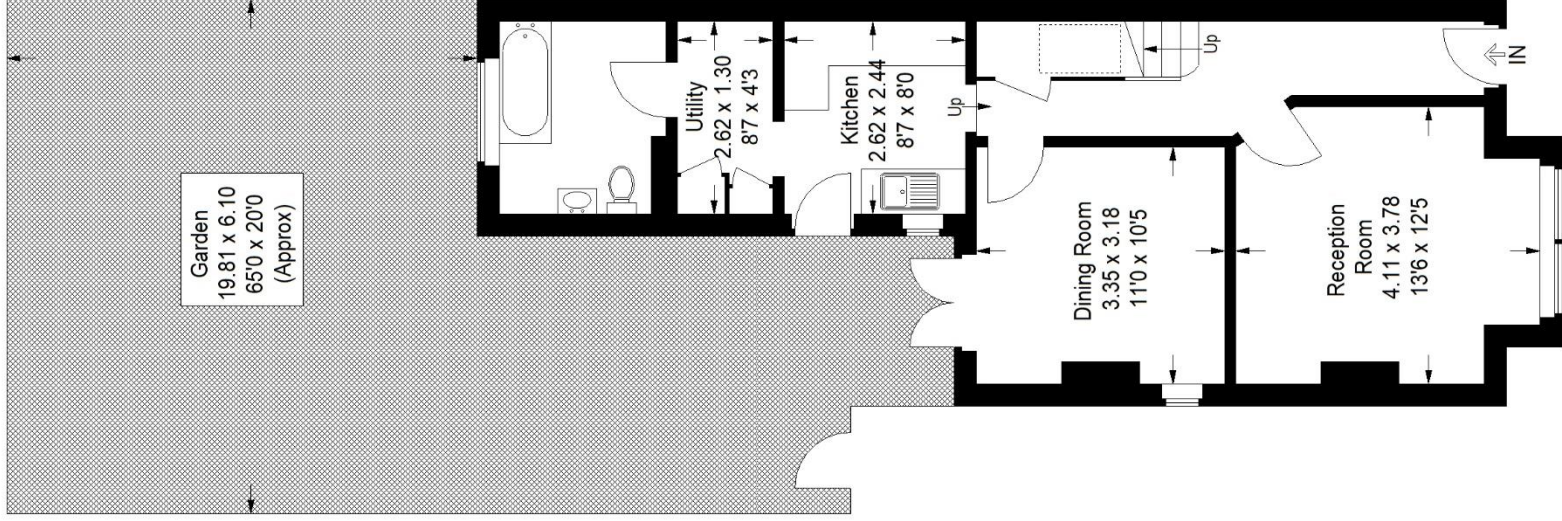
Burlington Road, CR7

Approximate Gross Internal Area

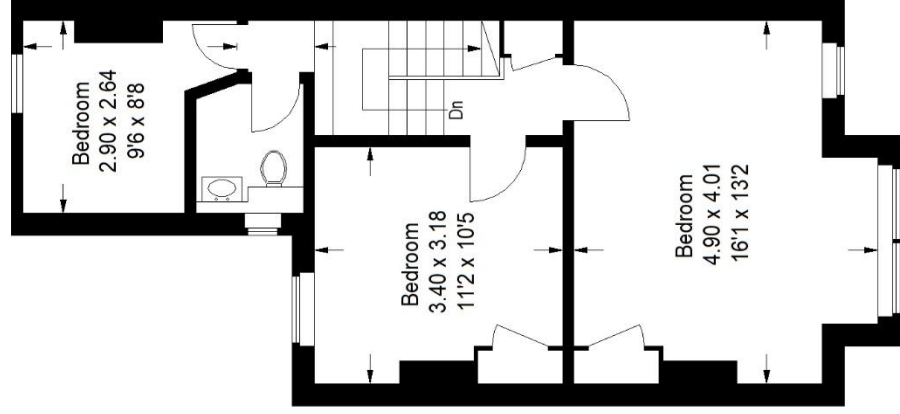
Ground Floor = 52.6 sq m / 566 sq ft

First Floor = 45.5 sq m / 490 sq ft

Total = 98.1 sq m / 1056 sq ft

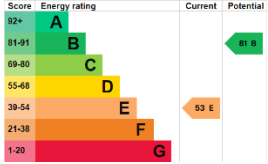


Reduced headroom below 1.5 m / 5'0



Ground Floor

First Floor



Pedder Property Ltd trading as Pedder for themselves and for the vendor/landlord of this property whose agents they are, give notice that (1) these particulars do not constitute any part of an offer or contract, (2) all statements contained within these particulars are made without responsibility on the part of Pedder or the vendor/landlord, (3) whilst made in good faith, none of the statements contained within these particulars are to be relied upon as a statement of representation or fact, (4) any intending purchaser/tenant must satisfy him/herself by inspection or otherwise as to the correctness of each of the statements contained within these particulars, (5) the vendor/landlord

Copyright www.pedderproperty.com © 2024

These plans are for representation purposes only as defined by RICS - Code of Measuring Practice. Not drawn to Scale. Windows and door openings are approximate. Please check all dimensions, shapes and compass bearings before making any decisions reliant upon them.