



Auckland Road, SE19  
£390,000

0208 702 9333  
[pedderproperty.com](https://www.pedderproperty.com)

**pedder**



# In general

- Beautifully finished accommodation
- Light and bright reception room
- Residents parking
- High ceilings and features
- Nearby Norwood Park / Lakes
- First floor

# In detail

A two bedroom first floor period conversion bursting with character and charm and upgraded to meticulous detail by the current owner.

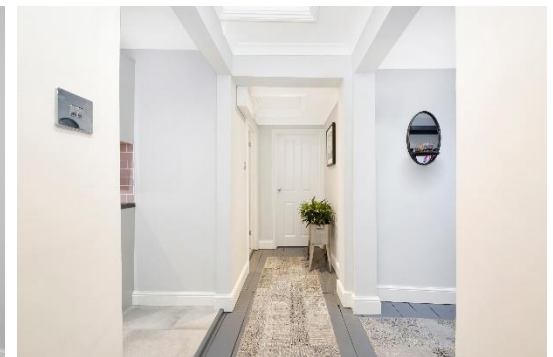
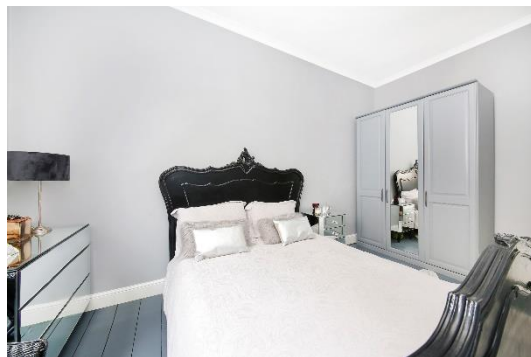
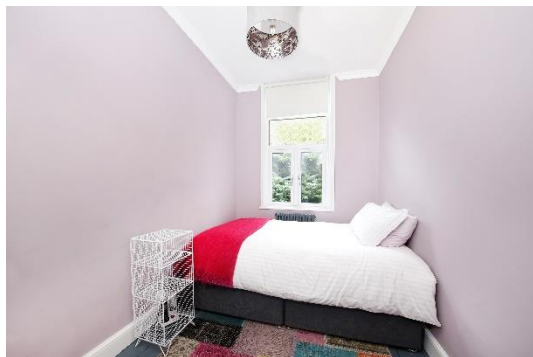
This light and bright apartment boasts an exceptional standard of accommodation and forms part of an attractive detached brick-fronted Victorian build, conveniently placed for both central Crystal Palace, Norwood Park / Lakes, and Crystal Palace rail links.

Highlights include stripped wood flooring throughout, contemporary tones and decor which compliment the high ceilings and features, a recently fitted kitchen with integrated appliances, a stylish bathroom with premium fittings and a claw-foot bath, two well-appointed bedrooms, a recently replaced seven-panel bay window, residents parking, communal grounds, two loft storage spaces, and a long lease.

This warm and inviting retreat could make for the perfect hassle-free first time purchase and really should be viewed to be appreciated.

No onward chain.

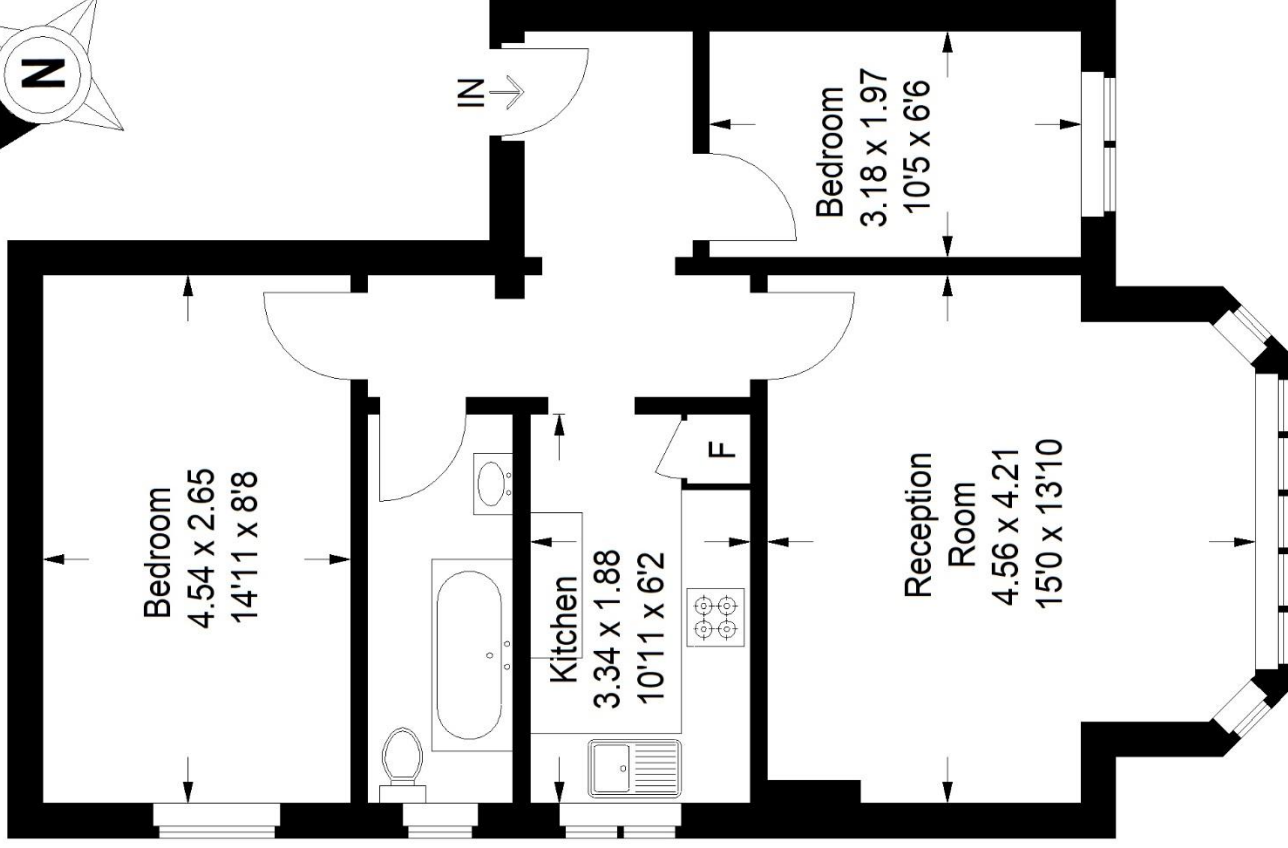
EPC: D | Council Tax Band: C | Lease: 119 years remaining | SC: £1,800 | GR: £50 | BI £325pa



# Floorplan

## Auckland Road, SE19

Approximate Gross Internal Area  
56.0 sq m / 603 sq ft



### First Floor

Copyright [www.pedderproperty.com](http://www.pedderproperty.com) © 2018

These plans are for representation purposes only as defined by RICS - Code of Measuring Practice. Not drawn to Scale. Windows and door openings are approximate. Please check all dimensions, shapes and compass bearings before making any decisions reliant upon them.