



47 Victory Avenue, Bradwell

£425,000 Freehold

Guide price £425,000-£450,000 Set within the prestigious Norfolk Homes development in Bradwell, this detached residence blends modern comfort with versatile living. From the moment you arrive, the welcoming façade and sun-filled interiors hint at the thoughtful design and spacious layout within. A striking sitting room, a contemporary kitchen with integrated appliances, and flexible living spaces create the perfect backdrop for family life, work, and entertaining. Upstairs, four bedrooms offer comfort and privacy, complemented by stylish bathrooms and built-in storage. Outside, a landscaped garden, decked terrace, and generous driveway complete a home designed for both relaxation and practicality. Offered chain free, this is a rare opportunity to embrace a sophisticated, adaptable lifestyle in a sought-after village setting.

Council Tax band: E

Tenure: Freehold

Guide price £425,000-£450,000 Set within the prestigious Norfolk Homes development in Bradwell, this detached residence blends modern comfort with versatile living. From the moment you arrive, the welcoming façade and sun-filled interiors hint at the thoughtful design and spacious layout within. A striking sitting room, a contemporary kitchen with integrated appliances, and flexible living spaces create the perfect backdrop for family life, work, and entertaining. Upstairs, four bedrooms offer comfort and privacy, complemented by stylish bathrooms and built-in storage. Outside, a landscaped garden, decked terrace, and generous driveway complete a home designed for both relaxation and practicality. Offered chain free, this is a rare opportunity to embrace a sophisticated, adaptable lifestyle in a sought-after village setting.

Location

Victory Avenue sits in the heart of Bradwell, a quiet village on the outskirts of Great Yarmouth, Norfolk. Residents benefit from local convenience shops within walking distance, including a small newsagent, a post office, and a grocery store, while larger



Guide price £425,000-£450,000 Set within the prestigious Norfolk Homes development in Bradwell, this detached residence blends modern comfort with versatile living. From the moment you arrive, the welcoming façade and sun-filled interiors hint at the thoughtful design and spacious layout within. A striking sitting room, a contemporary kitchen with integrated appliances, and flexible living spaces create the perfect backdrop for family life, work, and entertaining. Upstairs, four bedrooms offer comfort and privacy, complemented by stylish bathrooms and built-in storage. Outside, a landscaped garden, decked terrace, and generous driveway complete a home designed for both relaxation and practicality. Offered chain free, this is a rare opportunity to embrace a sophisticated, adaptable lifestyle in a sought-after village setting.



Guide price £425,000-£450,000 Set within the prestigious Norfolk Homes development in Bradwell, this detached residence blends modern comfort with versatile living. From the moment you arrive, the welcoming façade and sun-filled interiors hint at the thoughtful design and spacious layout within. A striking sitting room, a contemporary kitchen with integrated appliances, and flexible living spaces create the perfect backdrop for family life, work, and entertaining. Upstairs, four bedrooms offer comfort and privacy, complemented by stylish bathrooms and built-in storage. Outside, a landscaped garden, decked terrace, and generous driveway complete a home designed for both relaxation and practicality. Offered chain free, this is a rare opportunity to embrace a sophisticated, adaptable lifestyle in a sought-after village setting.

Location

Victory Avenue sits in the heart of Bradwell, a quiet village on the outskirts of Great Yarmouth, Norfolk. Residents benefit from local convenience shops within walking distance, including a small newsagent, a post office, and a grocery store, while larger supermarkets and high-street shops are just a short drive away in central Great Yarmouth. For families, Bradwell Primary School is nearby, providing education for younger children, while secondary schools such as Ormiston Venture Academy and Cliff Park Ormiston Academy are easily accessible in Gorleston.

Healthcare needs are served by local GP practices and the nearby James Paget University Hospital, offering both general and specialist care. For leisure, the area is close to Gorleston's sandy beaches, parks, and riverside paths, encouraging outdoor activities and a relaxed coastal lifestyle. Transport links are strong: regular bus routes connect Bradwell to Great Yarmouth and surrounding villages, while the A12 and A47 provide quick road access to Norwich and beyond, making it ideal for commuters who want a peaceful village environment without sacrificing connectivity.

Victory Avenue

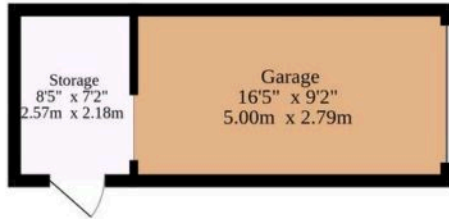
Offered chain free, this impressive detached residence is ideally positioned on a generous plot within the highly regarded Norfolk Homes development in the sought-after village of Bradwell.

A home that effortlessly combines contemporary living with timeless charm, it offers spacious and adaptable accommodation that can be tailored to suit your lifestyle. The exterior exudes subtle elegance, with a well-maintained lawn and a pitched porch, welcoming natural light into the property.

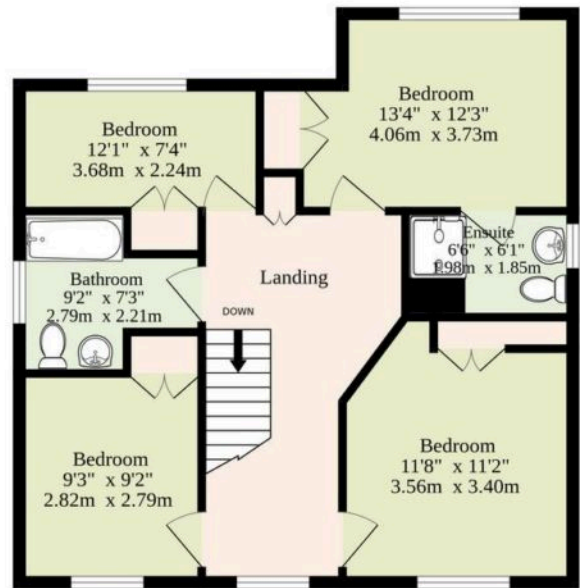
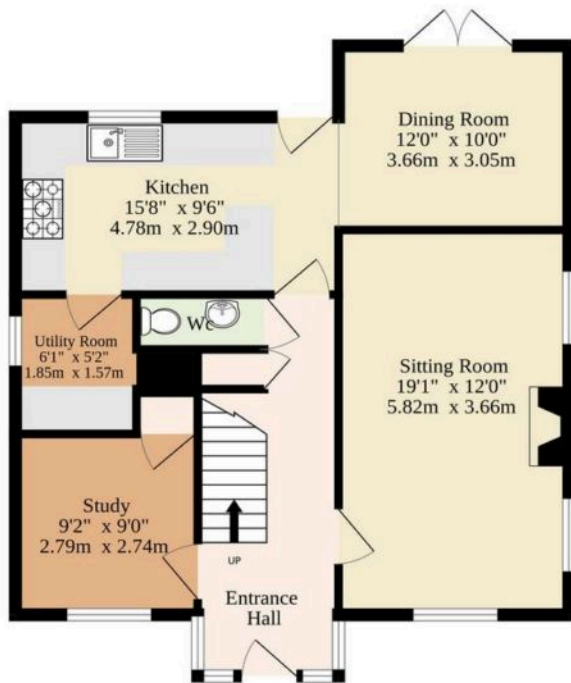
Step inside to a bright and airy entrance hall, complemented by a convenient WC, and flow seamlessly into the expansive sitting



Ground Floor
899 sq.ft. (83.5 sq.m.) approx.



1st Floor
665 sq.ft. (61.8 sq.m.) approx.



Sqft Includes The Garage

TOTAL FLOOR AREA : 1564 sq.ft. (145.3 sq.m.) approx.

Whilst every attempt has been made to ensure the accuracy of the floorplan contained here, measurements of doors, windows, rooms and any other items are approximate and no responsibility is taken for any error, omission or mis-statement. This plan is for illustrative purposes only and should be used as such by any prospective purchaser. The services, systems and appliances shown have not been tested and no guarantee as to their operability or efficiency can be given.
Made with Metropix ©2025

You can include any text here. The text can be modified upon generating your brochure.

You can include any text here. The text can be modified upon generating your brochure.

