

Wheatdene The Street, Runham

£350,000 Freehold

A charming three bedroom detached house in the village of Runham near The Broads. Set within a tranquil setting with exposed stone walls, a wood burner, a generous garden plot and three well-proportioned bedrooms. Offering a peaceful retreat and endless potential for customisation. Not to be missed!

Tenure: Freehold

A charming three bedroom detached house in the village of Runham near The Broads. Set within a tranquil setting with exposed stone walls, a wood burner, a generous garden plot and three well-proportioned bedrooms. Offering a peaceful retreat and endless potential for customisation. Not to be missed!

LOCATION

The village of Runham is 5 miles north west of the coastal town of Great Yarmouth, close to the villages of Thrigby, Filby and Stokesby. Runham is within easy reach of the beautiful Norfolk Broads and a short drive from the Norfolk coastline. This semi-rural area offers remote living for those who are seeking the country-side lifestyle, with a closeby post office in Filby and delightful café & public house in Stokesby. Plenty of wildlife can be spotted from your doorstep.

THE STREET

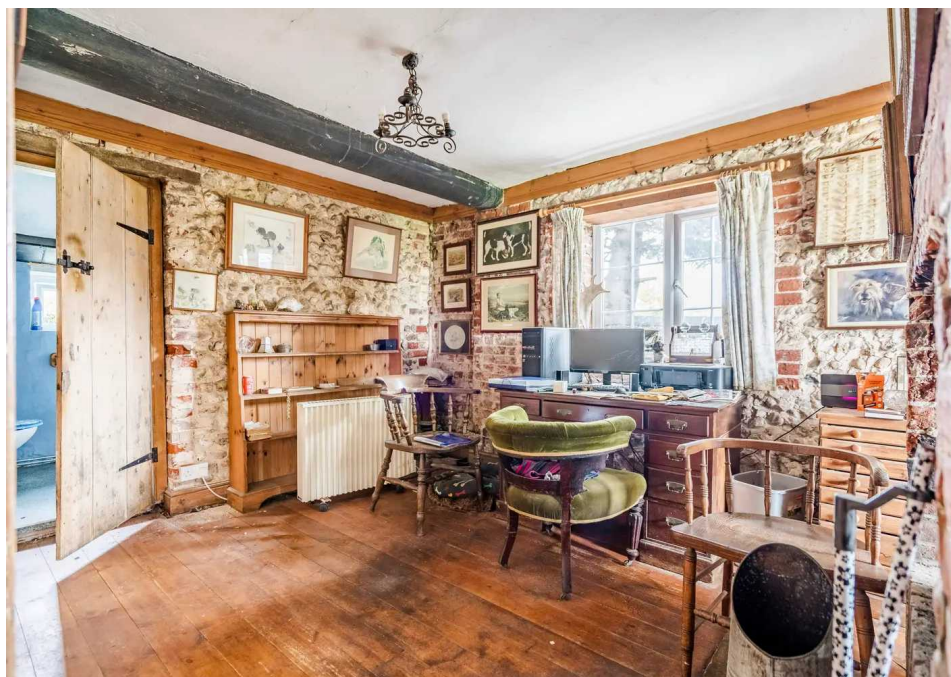
Nestled in a tranquil village location, this charming three bedroom detached house exudes a captivating cottage feel with its exposed stone wall and characterful



A charming three bedroom detached house in the village of Runham near The Broads. Set within a tranquil setting with exposed stone walls, a wood burner, a generous garden plot and three well-proportioned bedrooms. Offering a peaceful retreat and endless potential for customisation. Not to be missed!

LOCATION

The village of Runham is 5 miles north west of the coastal town of Great Yarmouth, close to the villages of Thrigby, Filby and Stokesby. Runham is within easy reach of the beautiful Norfolk Broads and a short drive from



A charming three bedroom detached house in the village of Runham near The Broads. Set within a tranquil setting with exposed stone walls, a wood burner, a generous garden plot and three well-proportioned bedrooms. Offering a peaceful retreat and endless potential for customisation. Not to be missed!

LOCATION

The village of Runham is 5 miles north west of the coastal town of Great Yarmouth, close to the villages of Thrigby, Filby and Stokesby. Runham is within easy reach of the beautiful Norfolk Broads and a short drive from the Norfolk coastline. This semi-rural area offers remote living for those who are seeking the country-side lifestyle, with a closeby post office in Filby and delightful café & public house in Stokesby. Plenty of wildlife can be spotted from your doorstep.

THE STREET

Nestled in a tranquil village location, this charming three bedroom detached house exudes a captivating cottage feel with its exposed stone wall and characterful features throughout. A picturesque abode with a timeless allure, this property presents a unique opportunity for those seeking a peaceful retreat.

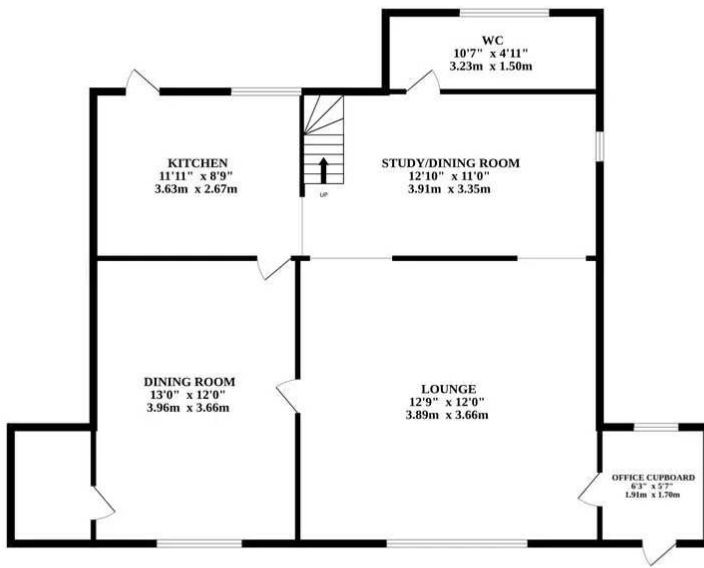
Upon arrival, you are welcomed by the convenience of off-road parking alongside a well-appointed garage, ensuring effortless access to the property. Stepping inside, the inviting ambience of the home is immediately apparent, with a feature wood burner adding warmth and charm to the living space. Enjoy a spacious lounge with access into the adjoining dining room, open access into the second dining room/study. To the rear of the property you can also access the ground floor bathroom and well-equipped kitchen which looks over the garden.

The first-floor accommodation includes three generously sized bedrooms, each offering comfortable and private sanctuaries for rest and relaxation. The property's versatile design caters to modern living requirements, with two bathrooms, one conveniently situated on the ground floor for added convenience and practicality.

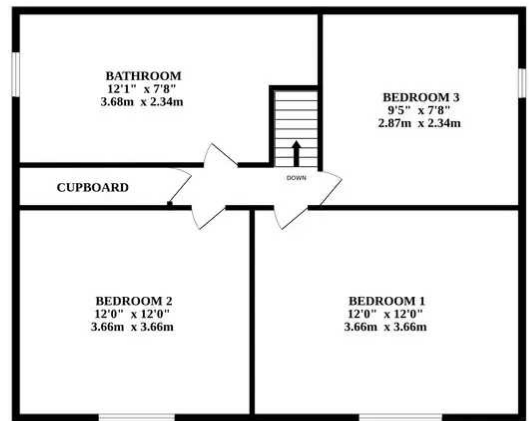
The residence is set on a generous plot that promises endless potential for personalisation and enhancement, creating a canvas for imaginative aspirations. Whether you are looking to create a beautiful garden oasis or extend the living space, the expansive grounds offer a myriad of possibilities for customisation to suit individual preferences and lifestyle needs.



GROUND FLOOR



1ST FLOOR



Whilst every attempt has been made to ensure the accuracy of the floorplan contained here, measurements of doors, windows, rooms and any other items are approximate and no responsibility is taken for any error, omission or mis-statement. This plan is for illustrative purposes only and should be used as such by any prospective purchaser. The services, systems and appliances shown have not been tested and no guarantee as to their operability or efficiency can be given.
Made with Metropix ©2024

You can include any text here. The text can be modified upon generating your brochure.

You can include any text here. The text can be modified upon generating your brochure.

