



## 3 Meadow Rise, Hemsby

£325,000 Freehold

GUIDE PRICE: £325,000-£350,000. Finished to a high standard throughout with an exceptional open plan kitchen and diner. Introducing this three bedroom detached bungalow in the sought after coastal village of Hemsby. Boasting a bright and airy feel, three double bedrooms, two bathrooms and...

Tenure: Freehold

GUIDE PRICE: £325,000-£350,000. Finished to a high standard throughout with an exceptional open plan kitchen and diner. Introducing this three bedroom detached bungalow in the sought after coastal village of Hemsby. Boasting a bright and airy feel, three double bedrooms, two bathrooms and a sizeable garden with off-road parking to the front. Not to be missed!

### LOCATION

Hemsby is a charming seaside village in Norfolk, known for its sandy beaches and classic seaside atmosphere. The beach at Hemsby is a popular spot for families and visitors, offering a relaxing setting for sunbathing and enjoying the North Sea views. The village provides a range of amenities, including seaside cafes and souvenir shops, making it a convenient and enjoyable destination for a traditional British coastal experience.

### MEADOW RISE

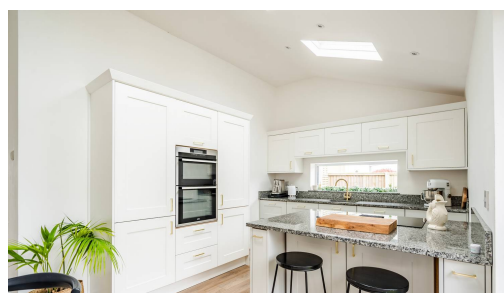
Elegance meets functionality in this exceptional three bedroom bungalow,



GUIDE PRICE: £325,000-£350,000. Finished to a high standard throughout with an exceptional open plan kitchen and diner. Introducing this three bedroom detached bungalow in the sought after coastal village of Hemsby. Boasting a bright and airy feel, three double bedrooms, two bathrooms and a sizeable garden with off-road parking to the front. Not to be missed!

### LOCATION

Hemsby is a charming seaside village in Norfolk, known for its sandy beaches and classic seaside atmosphere. The beach at Hemsby is a



GUIDE PRICE: £325,000-£350,000. Finished to a high standard throughout with an exceptional open plan kitchen and diner. Introducing this three bedroom detached bungalow in the sought after coastal village of Hemsby. Boasting a bright and airy feel, three double bedrooms, two bathrooms and a sizeable garden with off-road parking to the front. Not to be missed!

## LOCATION

Hemsby is a charming seaside village in Norfolk, known for its sandy beaches and classic seaside atmosphere. The beach at Hemsby is a popular spot for families and visitors, offering a relaxing setting for sunbathing and enjoying the North Sea views. The village provides a range of amenities, including seaside cafes and souvenir shops, making it a convenient and enjoyable destination for a traditional British coastal experience.

## MEADOW RISE

Elegance meets functionality in this exceptional three bedroom bungalow, meticulously crafted and finished to the highest standard throughout. Located in a sought-after area, this property offers a perfect blend of modern design and comfortable living.

Upon entering, you are immediately struck by the warmth of the interior and the attention to detail evident in every corner. The focal point of the living space is undoubtedly the feature wood burner, providing both a cosy ambience and a touch of sophistication. Natural light floods the open-plan contemporary kitchen, illuminating the sleek finishes and high-end appliances. The property also features a breakfast bar, perfect for casual dining or entertaining guests. A convenient utility room offers additional storage and workspace, ensuring practicality is never compromised.

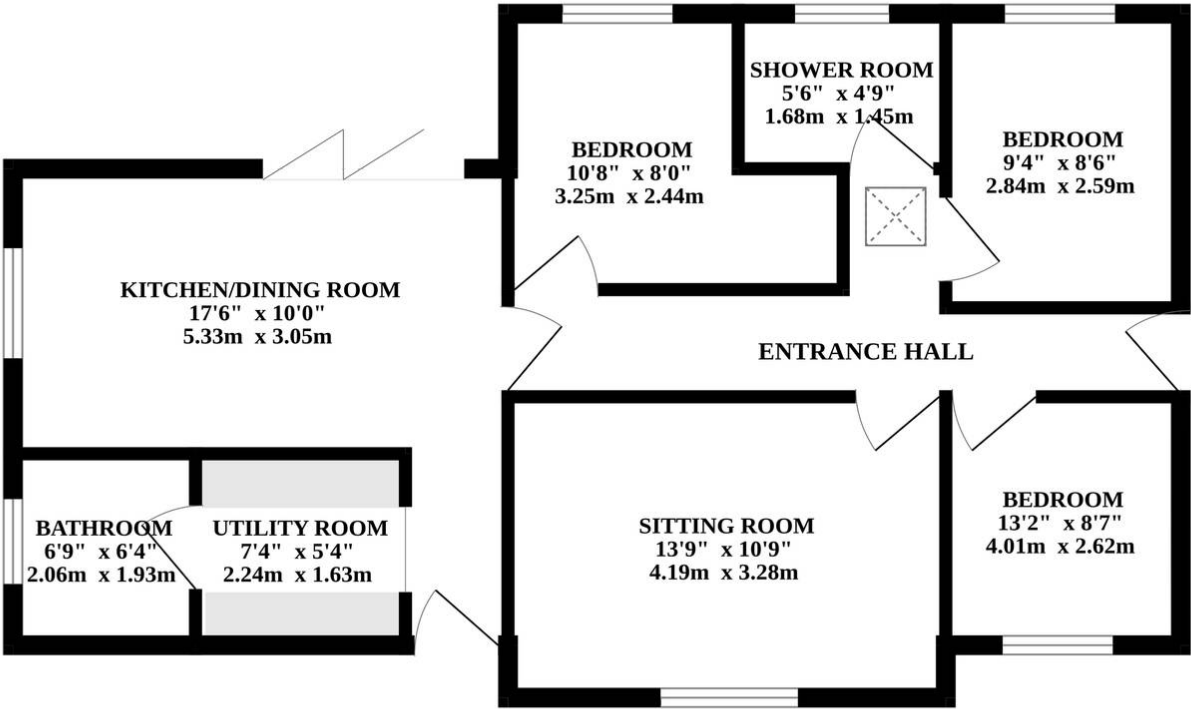
The property boasts two bathrooms, exuding style and functionality. Three generously proportioned bedrooms provide ample space for relaxation and rest. All bedrooms offer a wealth of space, the third bedroom could be used as a office or guest bedroom if required.

Outside, off-road parking ensures convenience for homeowners and visitors alike. To the rear aspect you can access a garden, mainly laid to lawn.

Positioned in close proximity to the beach and local amenities, this bungalow offers a lifestyle of convenience and luxury. Whether you enjoy leisurely strolls along the shore or exploring nearby shops and restaurants, this property provides easy access to a



GROUND FLOOR



Whilst every attempt has been made to ensure the accuracy of the floorplan contained here, measurements of doors, windows, rooms and any other items are approximate and no responsibility is taken for any error, omission or mis-statement. This plan is for illustrative purposes only and should be used as such by any prospective purchaser. The services, systems and appliances shown have not been tested and no guarantee as to their operability or efficiency can be given.  
Made with Metropix ©2024

You can include any text here. The text can be modified upon generating your brochure.

You can include any text here. The text can be modified upon generating your brochure.

