

## 45 Fairway Lakes Village, Caldecott Hall

£325,000 Freehold

Exceptional 4-bed detached house with breathtaking views. Modern interior, spacious living area, 4 bedrooms, and decked areas for relaxation. Maintenance fee £1432. Offers comfort and luxury. Contact us for a viewing.

Tenure: Freehold



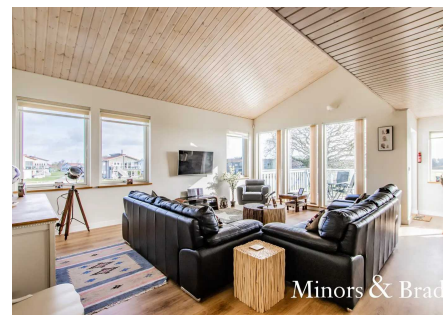
Exceptional 4-bed detached house with breathtaking views. Modern interior, spacious living area, 4 bedrooms, and decked areas for relaxation. Maintenance fee £1432. Offers comfort and luxury. Contact us for a viewing.

### LOCATION

Fritton is a village in Norfolk, situated 5 miles south-west of Great Yarmouth and 6 miles northwest of Lowestoft. It is only 11 miles south of the city of Norwich and is home to a 70 acre common surrounded by old oak trees. Fritton Church, St Catherine, has a round tower and a fine rood screen that dates back to the 1500's. There are schools, pubs, beautiful walks and hospital/doctors nearby. Fritton Lake is the heart of the village and is a family run private holiday club which offers adventures in nature including wild swimming, trail running, yoga, great local food and a positive life-changing impact on the environment.

### CALDECOTT HALL

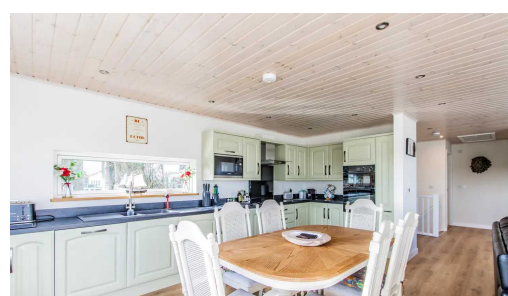
Introducing this exceptional 4-bedroom detached house boasting truly breathtaking



Exceptional 4-bed detached house with breathtaking views. Modern interior, spacious living area, 4 bedrooms, and decked areas for relaxation. Maintenance fee £1432. Offers comfort and luxury. Contact us for a viewing.

### LOCATION

Fritton is a village in Norfolk, situated 5 miles south-west of Great Yarmouth and 6 miles northwest of Lowestoft. It is only 11 miles south of the city of Norwich and is home to a 70 acre common surrounded by old oak trees. Fritton Church, St Catherine, has a round tower and a fine rood screen





Exceptional 4-bed detached house with breathtaking views. Modern interior, spacious living area, 4 bedrooms, and decked areas for relaxation. Maintenance fee £1432. Offers comfort and luxury. Contact us for a viewing.

## LOCATION

Fritton is a village in Norfolk, situated 5 miles south-west of Great Yarmouth and 6 miles northwest of Lowestoft. It is only 11 miles south of the city of Norwich and is home to a 70 acre common surrounded by old oak trees. Fritton Church, St Catherine, has a round tower and a fine rood screen that dates back to the 1500's. There are schools, pubs, beautiful walks and hospital/doctors nearby. Fritton Lake is the heart of the village and is a family run private holiday club which offers adventures in nature including wild swimming, trail running, yoga, great local food and a positive life-changing impact on the environment.

## CALDECOTT HALL

Introducing this exceptional 4-bedroom detached house boasting truly breathtaking views. Situated on a site with convenient facilities, this uniquely designed lodge offers a modern interior and an abundance of space. This freehold property is a remarkable investment opportunity.

The property offers a spacious open plan living area, providing the perfect space for relaxation and entertaining. The contemporary design and high-quality finishes create a welcoming and sophisticated atmosphere throughout.

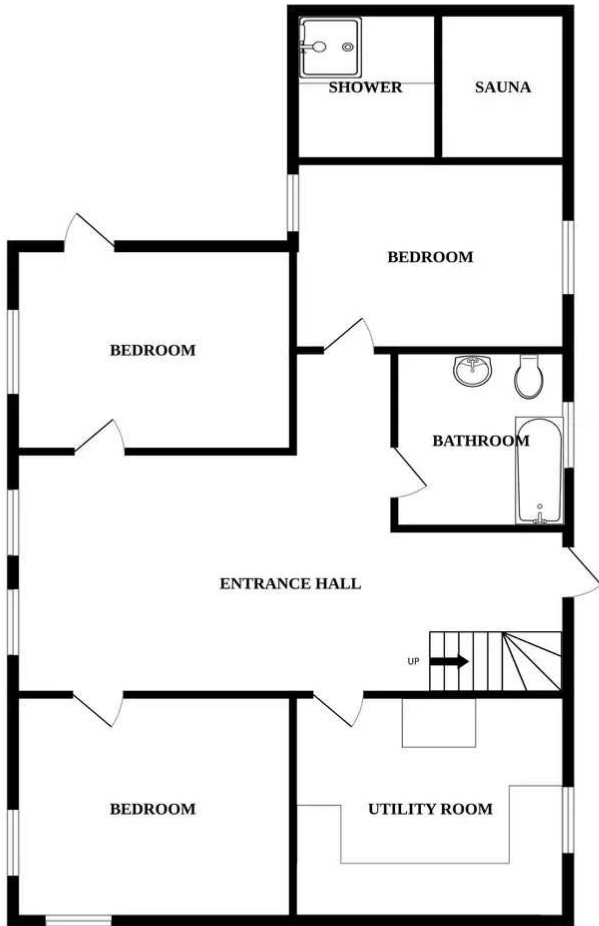
Featuring four generously sized bedrooms, this property offers ample space for a growing family or those who appreciate the luxury of space. Each bedroom is thoughtfully designed, ensuring both comfort and privacy.

The property's standout feature is undoubtedly its incredible views, offering a mesmerising backdrop from both the living area and the bedrooms. Whether waking up to the sunrise or enjoying a peaceful evening outdoors, the panoramic vistas allow for an experience beyond comparison.

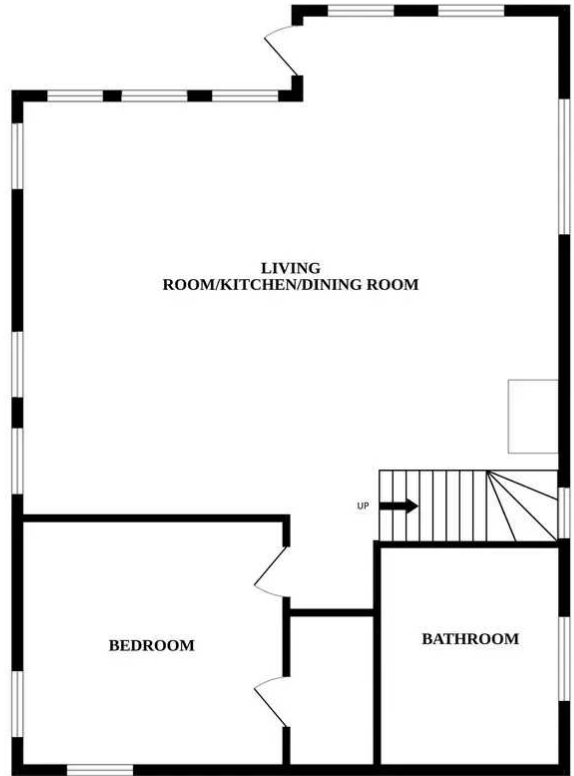
Additional features of this property include decked areas, where one can unwind and absorb the tranquillity of the surroundings. The outside spaces provide an opportunity to retreat from the daily hustle and bustle, offering a private sanctuary to enjoy the captivating views.



GROUND FLOOR



FIRST FLOOR



Whilst every attempt has been made to ensure the accuracy of the floorplan contained here, measurements of doors, windows, rooms and any other items are approximate and no responsibility is taken for any error, omission or mis-statement. This plan is for illustrative purposes only and should be used as such by any prospective purchaser. The services, systems and appliances shown have not been tested and no guarantee as to their operability or efficiency can be given.  
Made with Metropix ©2023

You can include any text here. The text can be modified upon generating your brochure.

You can include any text here. The text can be modified upon generating your brochure.

