



4 CROMWELL CLOSE, TORRINGTON, EX38 7DF

£450,000

A modern 4 bedroom detached family home situated in a quiet cul-de-sac and offering well presented accommodation including kitchen/dining room, comfortable lounge, conservatory & study together with attractive corner plot garden, double garage and ample driveway parking.

This superb family home is conveniently located within walking distance of local schooling and the town centre together with access to Torrington Commons, providing 360 acres of common land ideal for walkers, dog owners and nature enthusiasts.

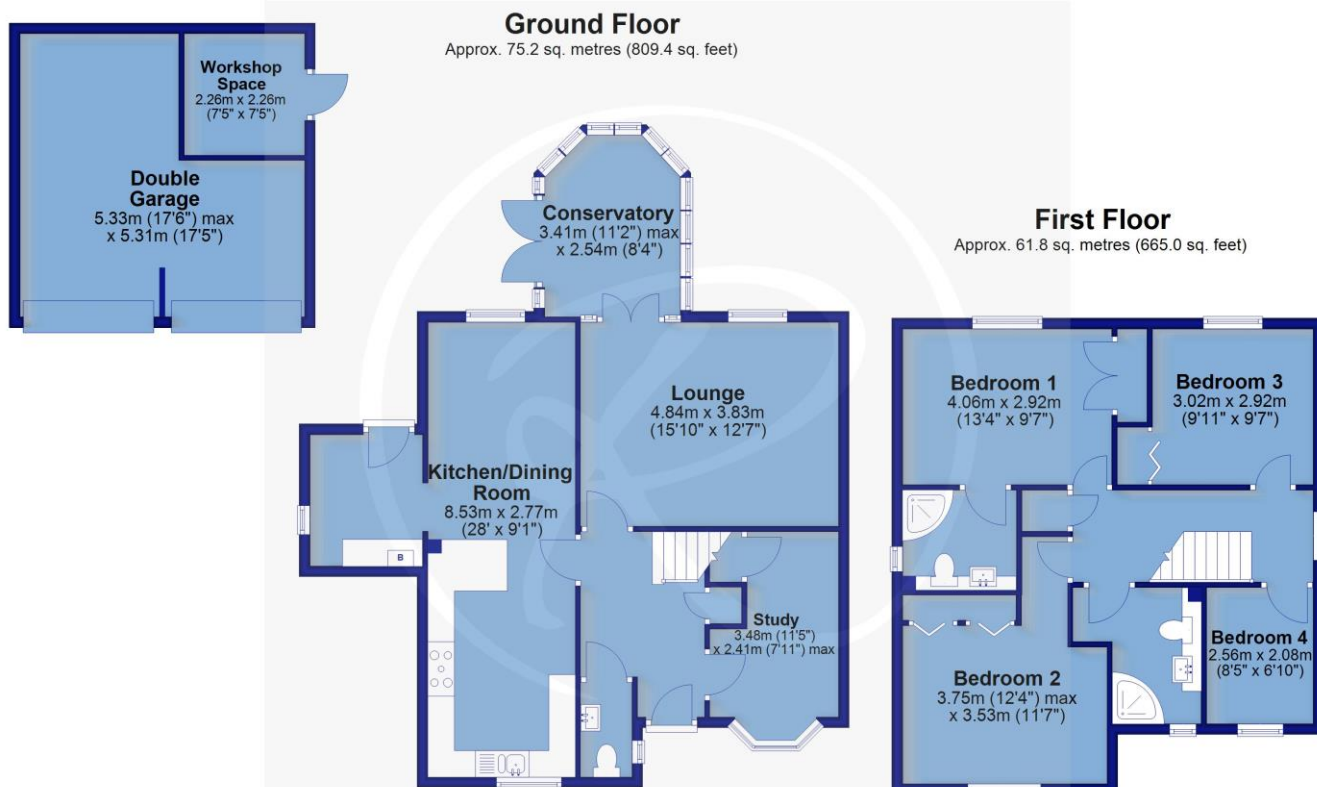
Nestled in a quiet cul-de-sac, offering comfortable & spacious accommodation, No4 is presented in good order throughout having been a much loved family home for the present owners.

From a welcoming entrance hall, the ground floor comprises a comfortable family lounge with conservatory off, enjoying a pleasant outlook over the garden. The kitchen/dining room is the hub of the home, a fantastic space to entertain friends & family with useful rear porch with utility space off.

Arranged over the first floor are the bedrooms, 3 of which are good sized double rooms with built-in wardrobes. The master ensuite & family shower room have each been modernised in recent years.

Externally the good sized rear garden features level lawns over two tiers with established borders & a patio whilst the double garage & drive provide ample off road parking.

Services: All mains services are connected
Energy Performance Certificate: B (86)
Council Tax: BAND E (£2,819.05 per annum)



For clarification we wish to inform prospective purchasers that we have prepared these sales particulars as a general guide. We have not carried out a detailed survey, nor tested the services, appliances and specific fittings. Room sizes should not be relied upon for carpets and furnishings. If there are any important matters which are likely to affect your decision to buy, please contact us before viewing the property. No responsibility can be accepted for any expenses incurred by any intending purchaser in inspecting properties which have been sold, let or withdrawn.