



18, Bulstrode Court,
Gerrards Cross, Buckinghamshire SL9 7RR

Peter Scott 
ESTATE AGENTS

A large one bedroom top floor apartment located in Bulstrode Court, Gerrards Cross. This delightful property enjoys views of the landscaped gardens and Gerrards Cross Common. The accommodations is generously proportioned offering large double bedroom, kitchen/breakfast room, lounge/diner, bathroom, and allocated parking with storage. This home is offered with no onward chain. Communal entrance with security entry and lift to all floors. This property is in Block A at Bulstrode Court which sits at the rear of this gated development and has an allocated parking space with storage cupboard. EPC rating: E Council Tax Band : D Service Charge: £1,299.00 per six months Lease: 130 years remaining

Spacious top floor apartment with balcon

Large 16' double bedroom with wardrobes and balcony access

Spacious Living room with balcony access

Fitted kitchen with appliances

Modern bathroom

Double glazed sash window and balcony doors

130 year lease

Walking distance to Gerrards Cross centre and railway station

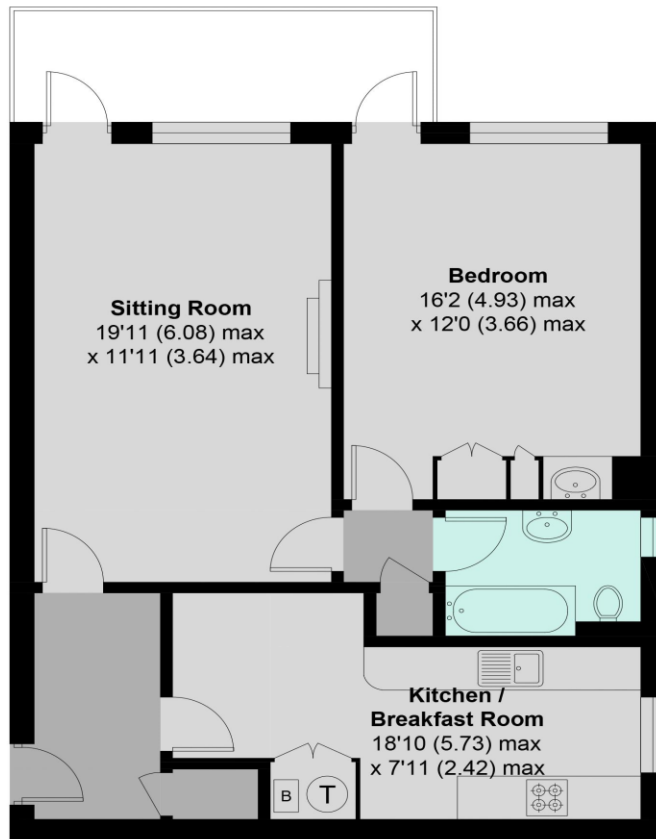
Views of the Common from the balcony

No upper chain

Location Bulstrode Court is opposite West Common on the southern side of the Oxford Road. West Common has two ponds, wooded areas and wide open spaces. The common is ideal for those seeking a nearby open space to relax and walk in.

The village centre of Gerrards Cross has a wide selection of shops including a Waitrose supermarket, cafes and coffee shops, restaurants, library and the Chiltern Line railway station to Marylebone (19 minutes fast train) is within walking distance.





Approximate Area = 758 sq ft / 70.4 sq m

For identification only - Not to scale

Peter Scott
ESTATE AGENTS

For further details call 01494 870 633 or email
peter@peterscottproperty.co.uk