




lomond
make yourself a home

5 Bank Street, PRestwick KA9 IPT

Accommodation

A delightful bungalow situated just a short walk from the town centre and beachfront. The property is beautifully presented throughout comprising large double bedroom, with lounge, kitchen and family bathroom. There are private gardens to the rear with ample parking on street to the front. The property is well decorated throughout and will appeal to those seeking the coastal lifestyle and on the level accommodation. Prestwick's main street is award winning, with a wonderful mixture of boutique shops, coffee shops, and bars.

Into more detail the entrance hallway leads to the front facing bedroom; double in size with traditionally high ceilings adding to that feeling of space. To the rear the lounge/ diner offers a degree of flexibility to the living space. Stylish modern flooring and neutral décor give the property a modern feel. The kitchen is to the rear and comes with both floor and wall mounted units, with integrated hob, oven. There is an excellent worktop space for those who enjoy to cook and bake. Access to the garden can be gained via the kitchen. Completing the property is the bathroom, with large bath, WC and WHB all finished to modern tiling.

Externally the property comes with a small garden to the front with pathed access to the front door. To the rear the garden is laid to lawn with south facing aspects.

Situation

Prestwick remains a firm favourite within the Ayrshire coastline; famous for its golf courses, sandy beaches, and harbourside, along with a bustling town centre, packed with shops, bars and coffee shops. There are a number of primary and secondary schools within the immediate area.

- Bungalow
- Close Proximity To Town Centre
- Close To The Beach
- Spacious Apartment
- Mix of Traditional Living / Modern Styling

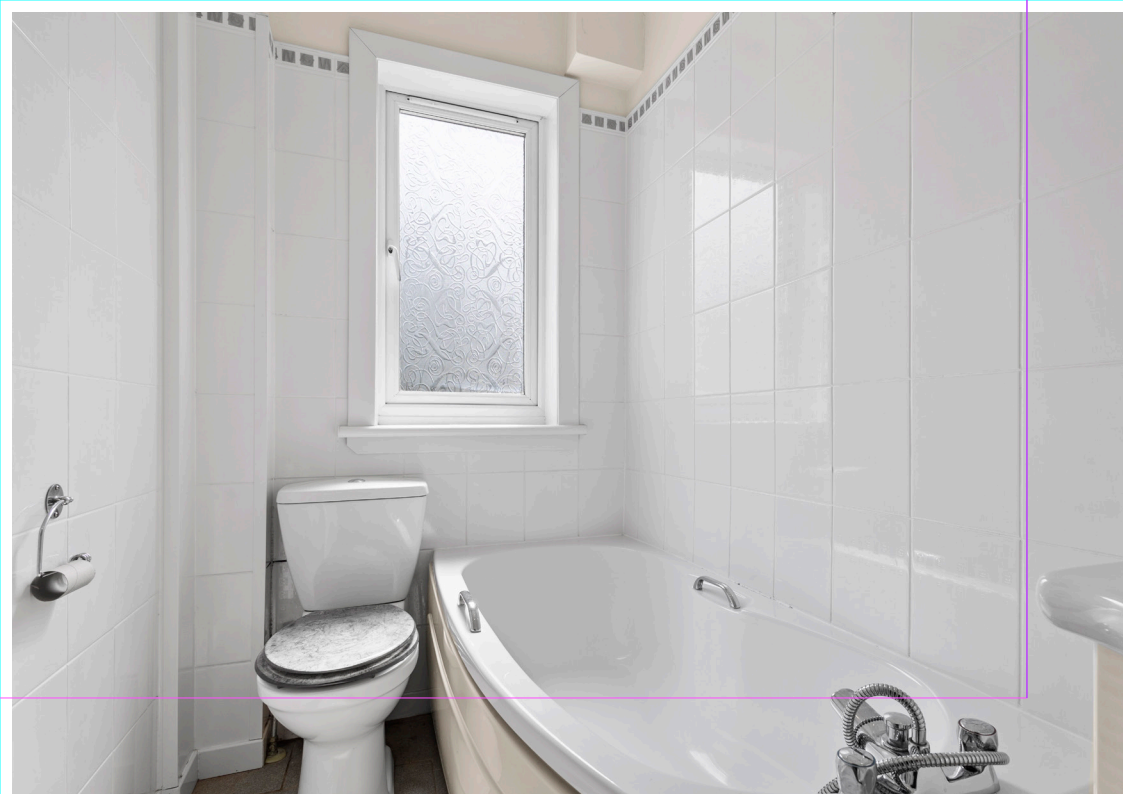


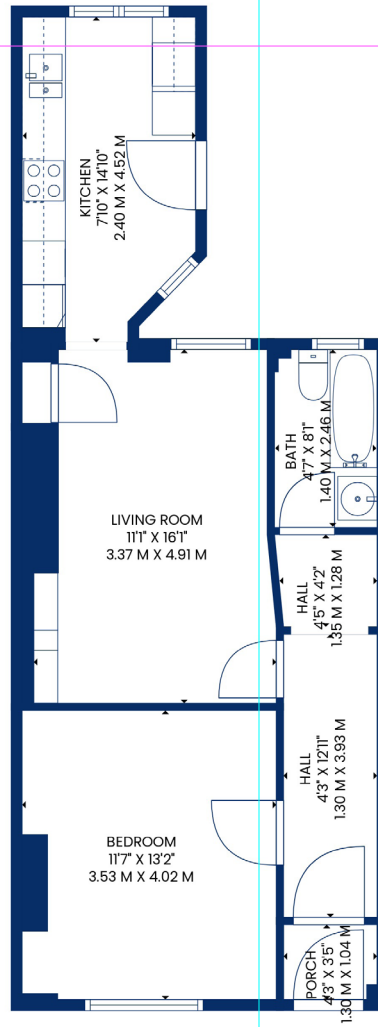
 1 Bedrooms

 53 sqm

 1 Public Rooms

 EPC Rating E





 51 Main Street, Prestwick
01292 471511

 52 Bank Street, Irvine
01294 317013



Any error, omission, or misstatement in any part of this schedule shall not entitle the purchaser(s) or vendor(s) to entitlement to compensation or damages, nor in circumstances to give either party any cause for action. The selling agents have not tested services, equipment or fittings and are therefore unable to comment on their condition. Potential buyers are requested to contact their solicitor or surveyor if further clarification is required. Measurements are approximate for guidance purposes only and have been taken by a sonic beam and are measured from wall to wall at the widest point unless otherwise indicated. Photographs are reproduced for general information and it must not be inferred that any item is included in the sale.