



  
**lomond**

make yourself a home

173 Prestwick Road, Ayr KA8 8NW



## Accommodation

Prestwick Road is located in the Heathfield area of Ayr, just a short drive to both Prestwick and Ayr town centres. Number 173 is an upper cottage flat presented to the market in excellent decorative order throughout comprising two double bedrooms, spacious lounge, modern kitchen and bathroom. Externally there are gardens to the rear. The property is well suited to the first time buyer and buy to let market.

Into more detail the side door entry has stairs to the upper level. The upper landing leads to the front facing lounge which is bright and airy with neutral décor, and large window allowing for plenty of natural light. There are two bedrooms, both of which are double in size, each with views of the garden, with Bedroom 2 benefitting further from fitted storage space. The kitchen is a recent upgrade with modern floor and wall units, complete with integrated hob, oven and hood. Completing the accommodation is the bathroom; again modern in styling with large walk in shower (mains), WC and WHB all finished to modern tiling, fixtures and fittings.

There is a further storage cupboard off the upper landing.

The image of Bedroom 1 has computer generated furniture added to allow you to see the potential layout.

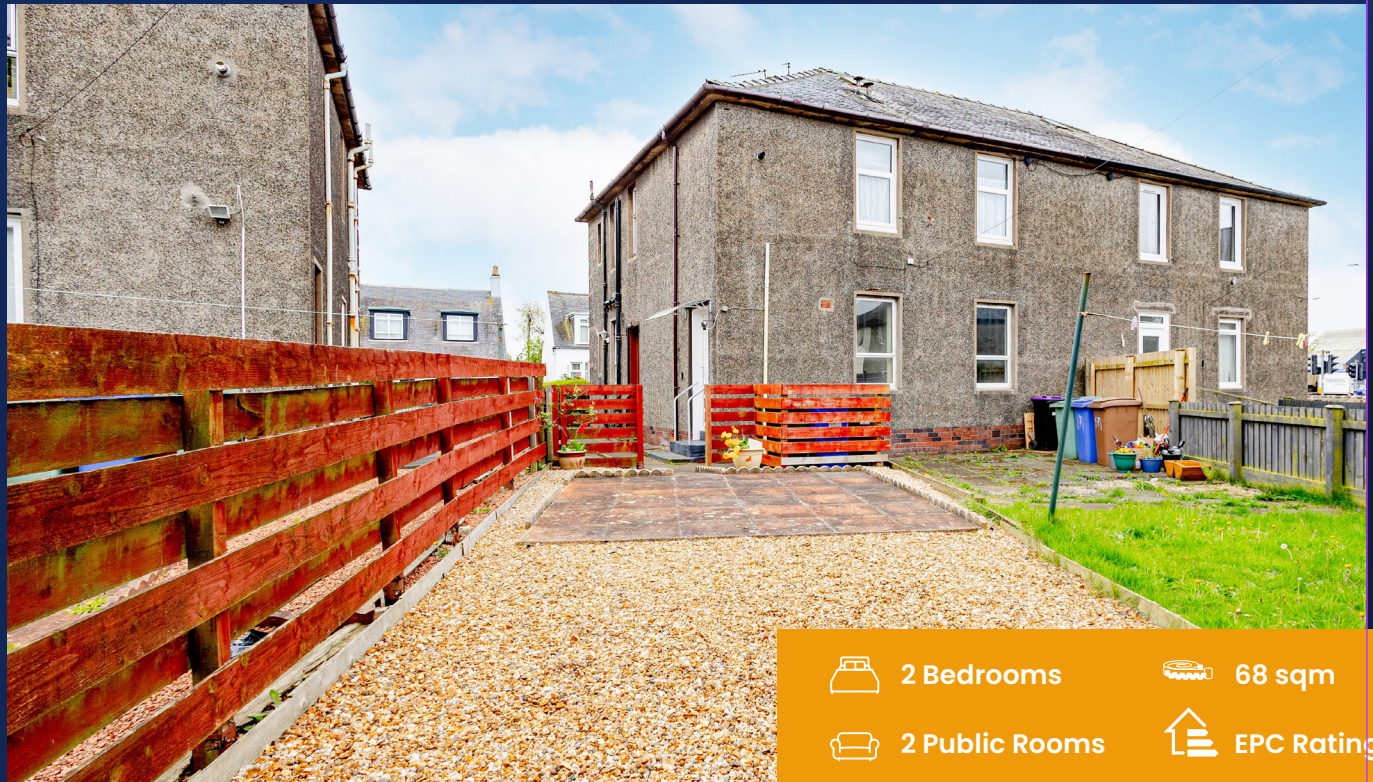
The property currently has a stair lift fitted. The owners are happy to have this removed or it can be separately purchased. Price TBC.

## Situation

Ayr and Prestwick remain firm favourites within the Ayrshire coastline; famous for its golf courses, sandy beaches, and harbourside, along with a bustling town centres, packed with shops, bars and coffee shops. There are a number of primary and secondary schools within the immediate area. Access to the main road networks is nearby with Newton on Ayr train station just 0.8 mile away. The bus stop is directly outside the property providing a regular service to and from Ayr.

- Upper Cottage
- Two Double Bedrooms
- Spacious Lounge
- Modern Kitchen
- Modern Bathroom
- Gas Central Heating
- Central Location

  
make yourself a home



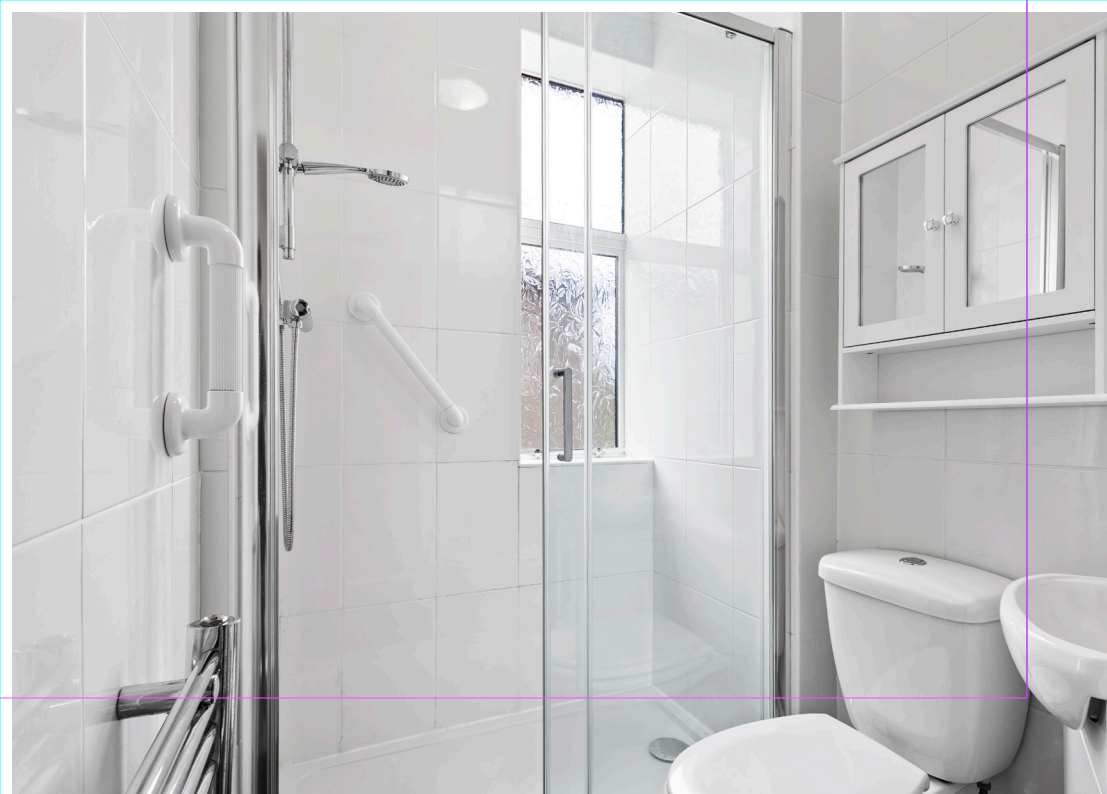
 2 Bedrooms

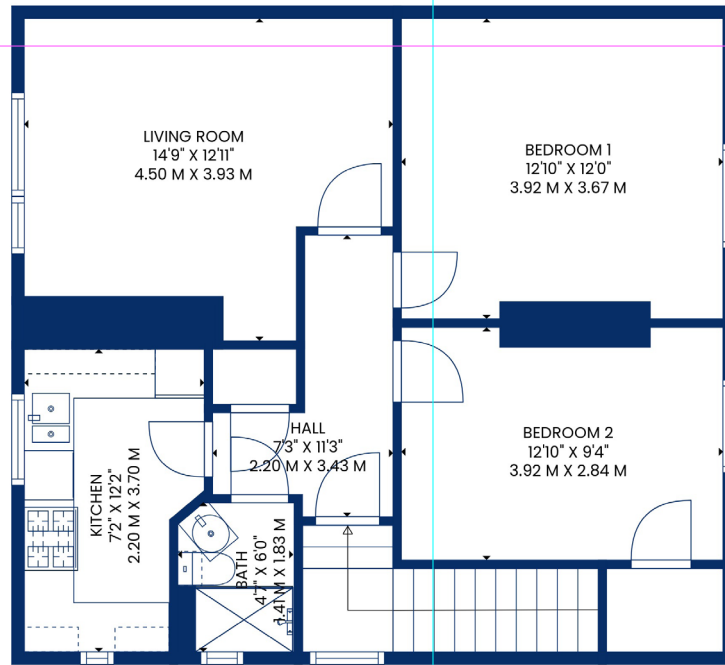
 68 sqm

 2 Public Rooms

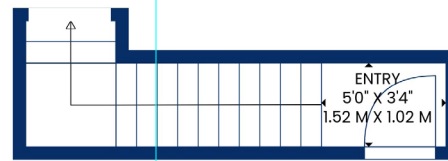
 EPC Rating C







FLOOR 2



FLOOR 1



 51 Main Street, Prestwick  
**01292 471511**

 52 Bank Street, Irvine  
**01294 317013**



Any error, omission, or misstatement in any part of this schedule shall not entitle the purchaser(s) or vendor(s) to entitlement to compensation or damages, nor in circumstances to give either party any cause for action. The selling agents have not tested services, equipment or fittings and are therefore unable to comment on their condition. Potential buyers are requested to contact their solicitor or surveyor if further clarification is required. Measurements are approximate for guidance purposes only and have been taken by a sonic beam and are measured from wall to wall at the widest point unless otherwise indicated. Photographs are reproduced for general information and it must not be inferred that any item is included in the sale.