



**lomond**

make yourself a home

9 Shillaw Place, Prestwick KA9 2NG

## Accommodation

A gorgeous ground floor flat, located in the hugely popular Kings Meadow area of Prestwick, benefitting from allocated parking, and its very own private west facing garden. Internally the accommodation comprises lounge/ diner, double bedroom, bathroom and kitchen. The property is immaculately presented throughout and offers walk in conditions.

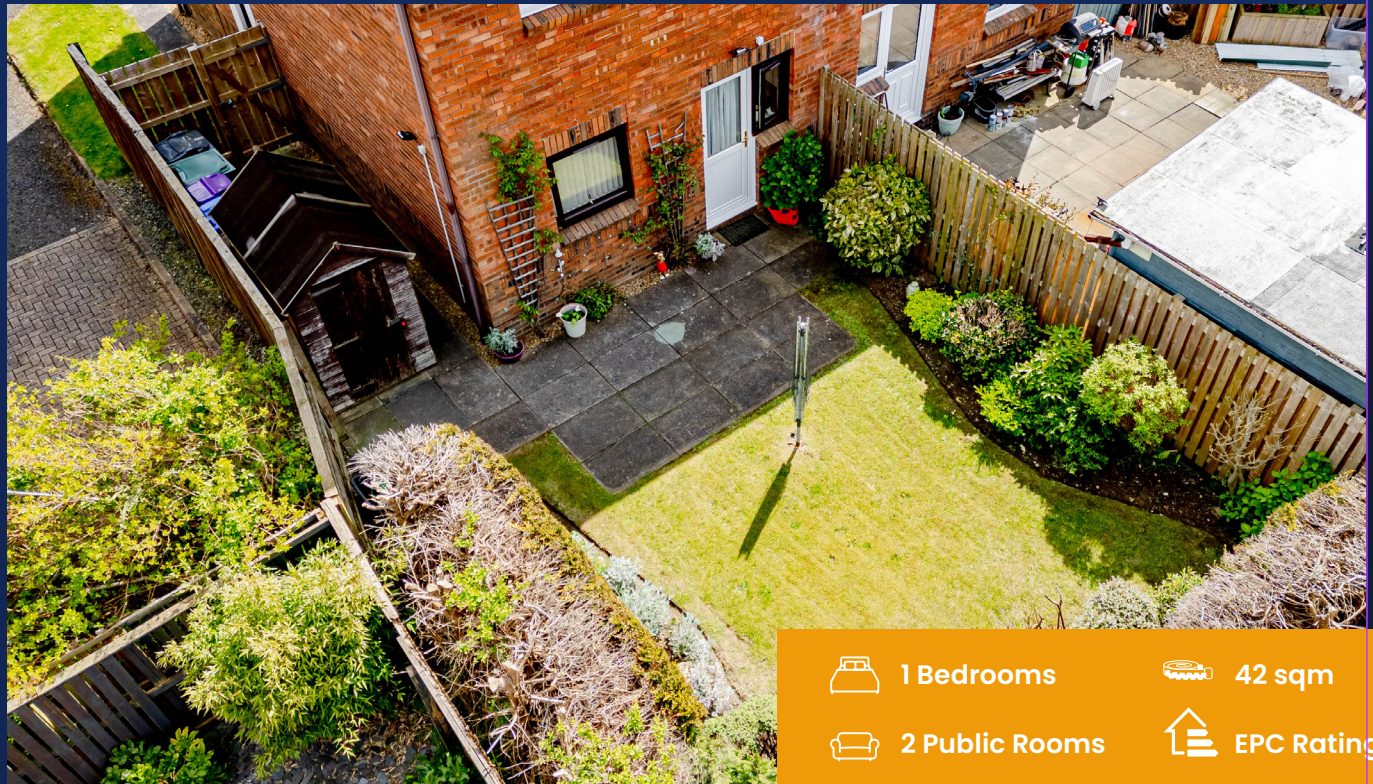
In summary the entrance vestibule leads to the front facing lounge. The layout is flexible with the current owner utilising the space as a lounge/ diner. To the rear the galley style kitchen is well stocked, featuring both floor and wall mounted units, with integrated hob, oven and hood. Access to the garden can be gained via the kitchen. The bedroom is double in size with full length fitted wardrobes, and views to the garden. The bathroom is modern with both bath, and electric over shower finished to stylish tiling, fixtures and fittings.

Externally the property has its very own allocated parking space with further visitor parking for your guest. The garden is private, west facing laid to lawn with patio area and timber shed.

## Situation

Shilliw Place is a popular location within the Kings Meadow Estate, the property offers ease of access to the main road networks. Prestwick has a vibrant Main Street with a number of independent retailers, coffee shops, bars and restaurants, supermarkets are close by and the town offers both primary and secondary schooling.

- Ground Floor Flat
- Double Bedroom
- Lounge/ Diner
- Allocated Parking
- Private West Facing Garden
- Fitted Wardrobes

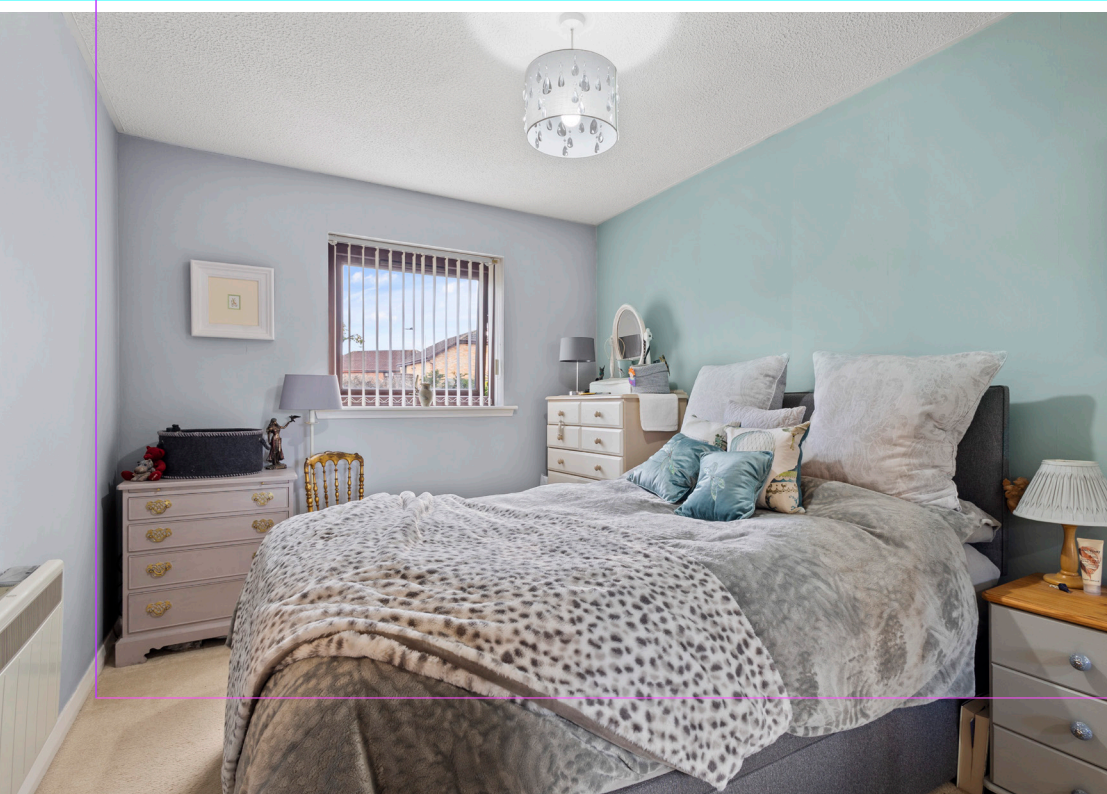


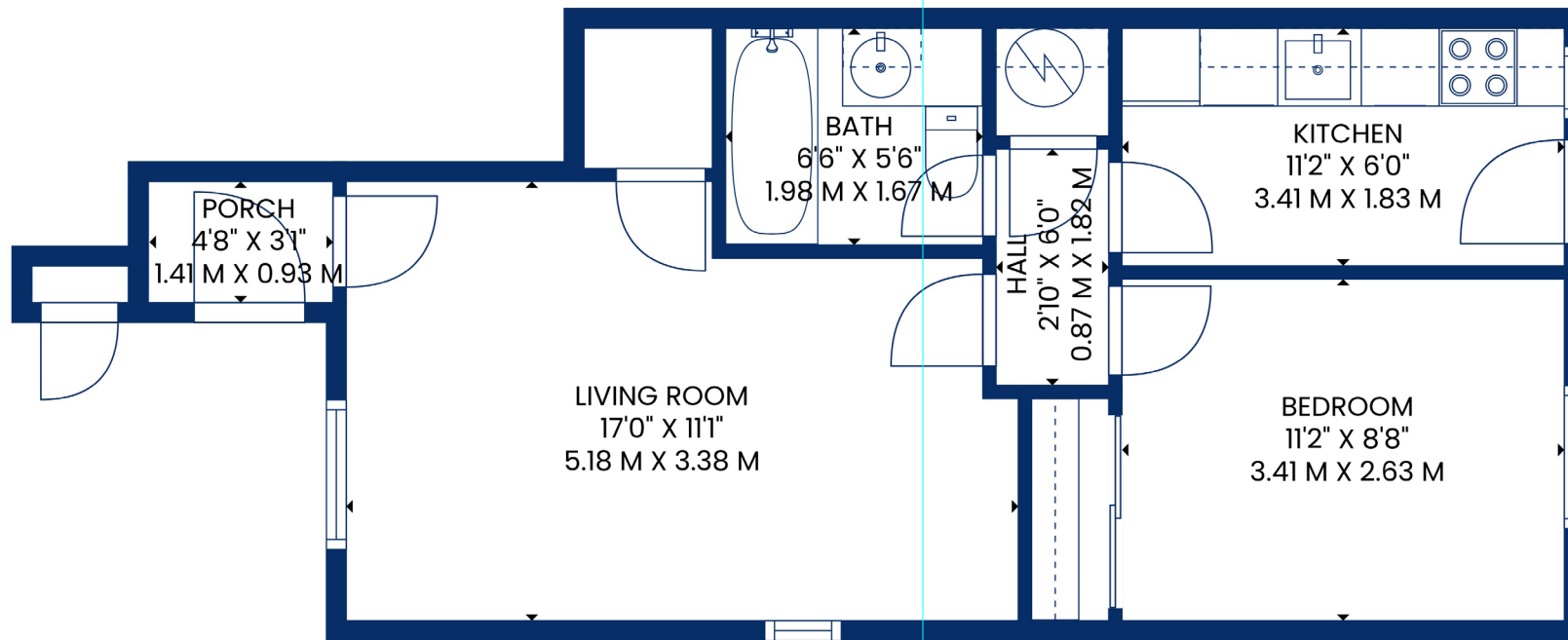
 1 Bedrooms

 42 sqm

 2 Public Rooms

 EPC Rating C






**51 Main Street, Prestwick**  
**01292 471511**


**52 Bank Street, Irvine**  
**01294 317013**



Any error, omission, or misstatement in any part of this schedule shall not entitle the purchaser(s) or vendor(s) to entitlement to compensation or damages, nor in circumstances to give either party any cause for action. The selling agents have not tested services, equipment or fittings and are therefore unable to comment on their condition. Potential buyers are requested to contact their solicitor or surveyor if further clarification is required. Measurements are approximate for guidance purposes only and have been taken by a sonic beam and are measured from wall to wall at the widest point unless otherwise indicated. Photographs are reproduced for general information and it must not be inferred that any item is included in the sale.