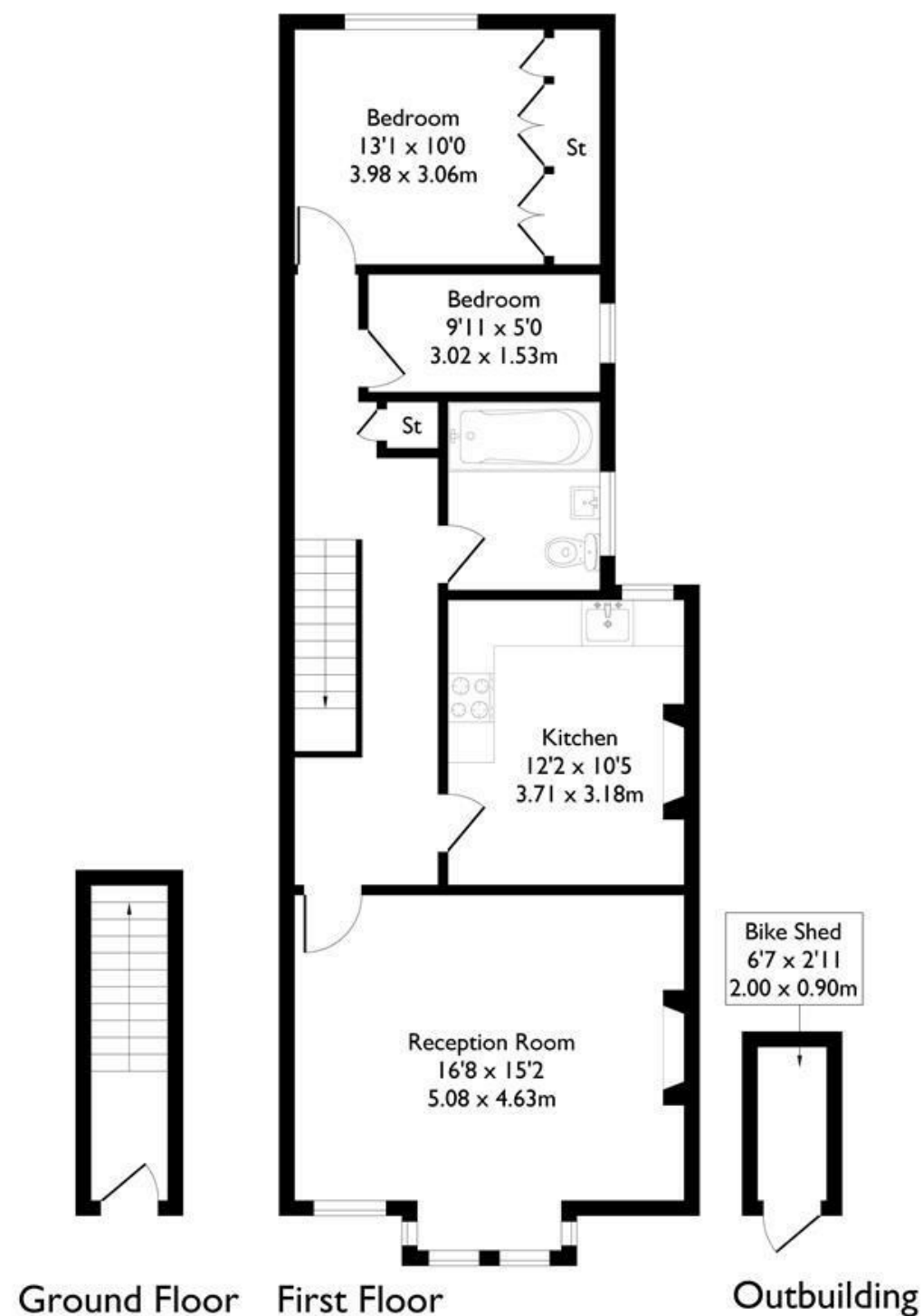
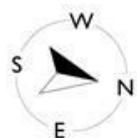


**30 Greenford Avenue, London, W7**  
Approximate Floor Area = 72.3 sq m / 778 sq ft



**FLAT**

**Greenford Avenue W7**  
**£1,995 PCM**

**FEATURES**

- Two Bedroom Flat
- First Floor
- Excellent Location
- Close To Transport
- Period Conversion
- Outside Storage At Front



FLAT

# Greenford Avenue W7

£1,995 PCM

This delightful flat offers a perfect blend of modern living and period character. The property is a beautiful conversion that has successfully retained its original features while incorporating contemporary comforts.

Upon entering, you will be greeted by a bright and airy reception room, which boasts high ceilings that enhance the sense of space and light. The flat comprises two well-proportioned bedrooms, providing ample space for a small family or professionals seeking a comfortable home.

