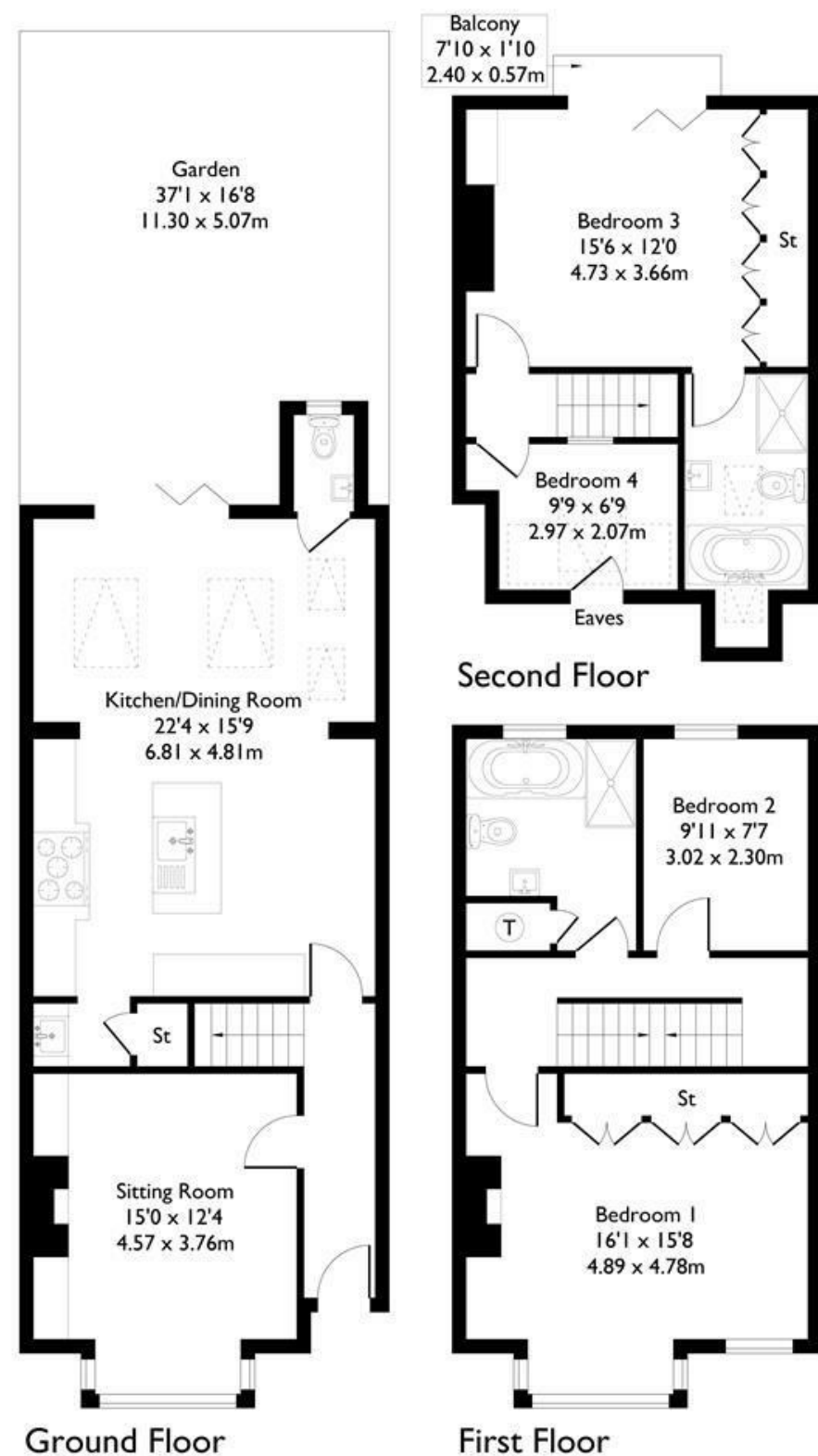


## Dudley Gardens, London, W13

Approximate Floor Area = 136.1 sq m / 1465 sq ft



### HOUSE - TERRACED

## Dudley Gardens W13

£3,800

### FEATURES

- Recently Renovated
- Tastefully designed and decorated
- Four bedroom house
- Off street parking
- Close to Northfields Tube and Fielding School
- Private garden



HOUSE - TERRACED

# Dudley Gardens W13

£3,800

Nestled in the charming Dudley Gardens, this home has undergone a stunning renovation, showcasing tasteful design and bright interiors that create a welcoming atmosphere.

Spanning an impressive 1,410 square feet, the property features an open plan kitchen and living area, ideal for both entertaining and family gatherings. The separate living room at the front provides a cosy retreat, perfect for quiet evenings. With four well-proportioned bedrooms, there is ample space for family or guests, ensuring comfort and privacy for all.

