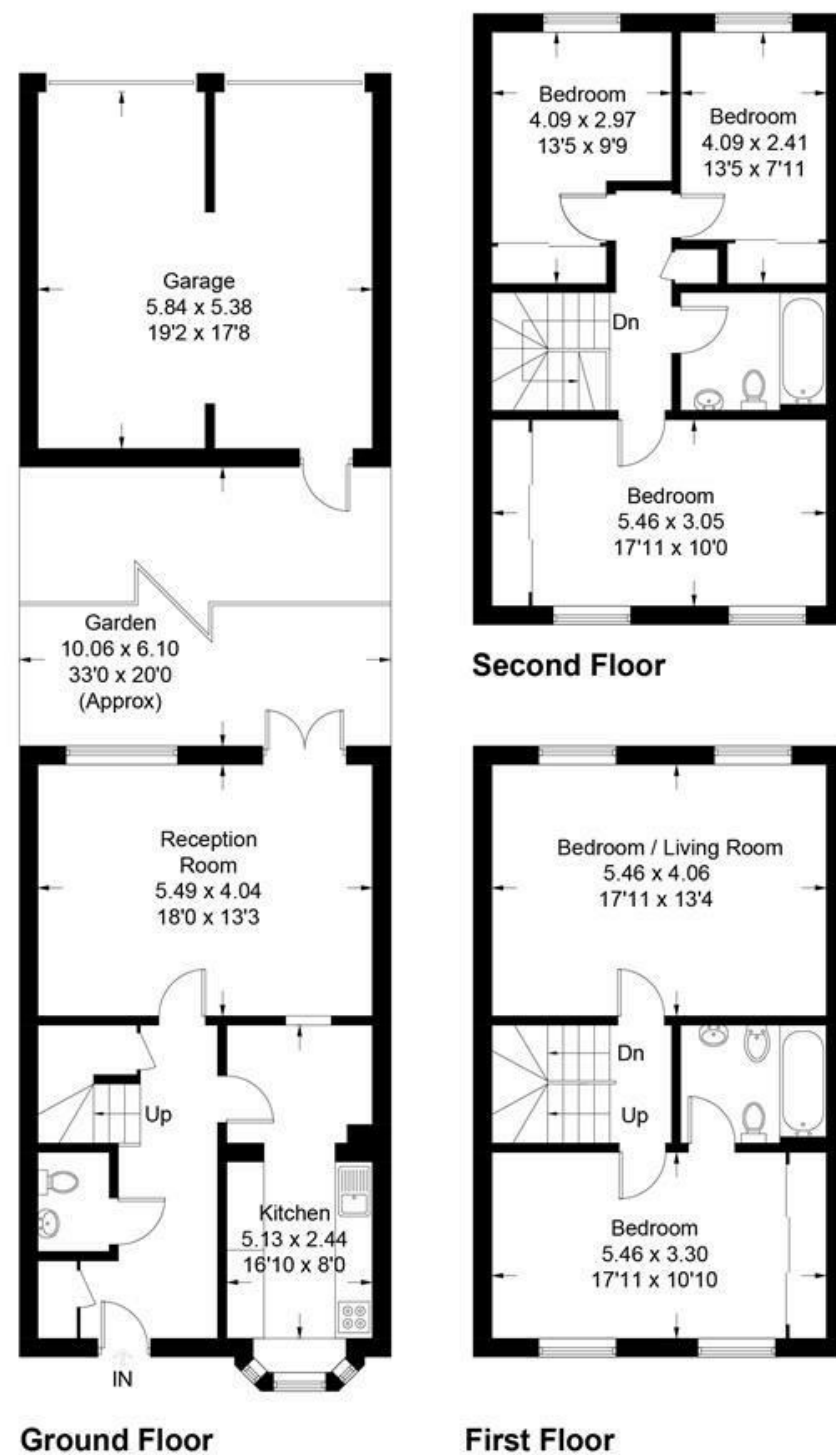


Woodville Gardens, W5

Approximate Gross Internal Area = 155.1 sq m / 1670 sq ft
Garage = 32 sq m / 345 sq ft
Total = 187.1 sq m / 2015 sq ft



HOUSE - TERRACED

Woodville Gardens W5 £3,500

FEATURES

- Two off street parking spaces
- Four double bedrooms with built in storage
- Two large reception rooms
- Private garden
- Double garage
- Three bathrooms
- Desirable location
- Close to Ealing Broadway

Measured in accordance with RICS Code of Measuring Practice. To be used for identification and guidance purposes only.
Whilst every care is taken in the preparation of this plan, please check all dimensions, shapes and compass bearings before making any decisions reliant upon them.
www.london58.com © 2021 hello@london58.com

HOUSE - TERRACED

Woodville Gardens W5

£3,500

This picturesque row of townhouses are set on one of Ealing's most beautiful and desirable roads with stunning views over the prestigious Ealing Cricket Club and only a few minutes from Ealing Broadway.

The ground floor of the property has a modern kitchen with plenty of workspace and storage, a downstairs WC, two further storage cupboards and a bright reception room with doors leading on to the well maintained and private rear garden.

