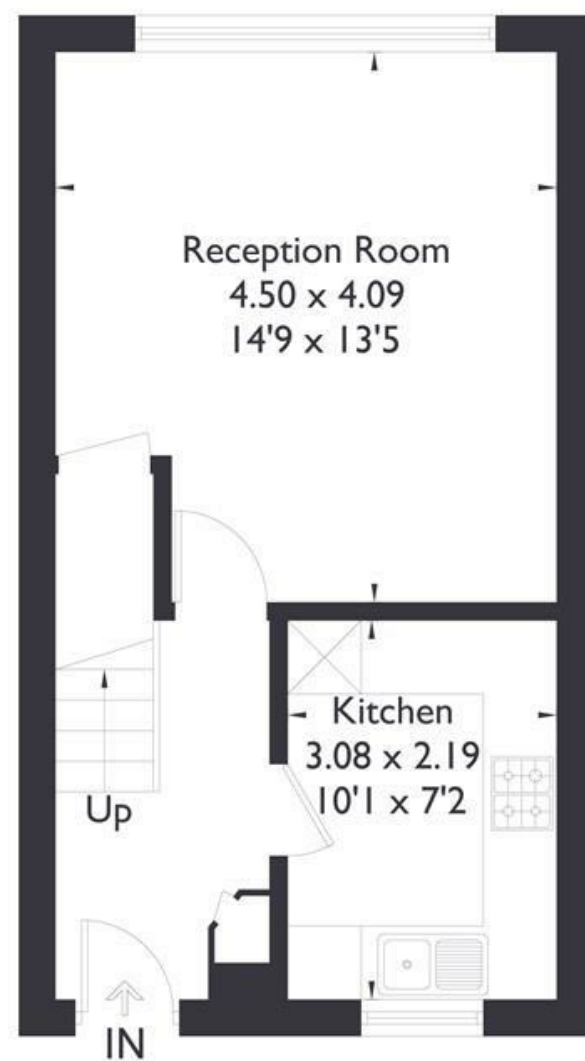


South Ealing Road, W5

Approximate Floor Area = 63.6 sq m / 684 sq ft



Second Floor



Third Floor



NOT SPECIFIED

FEATURES

South Ealing Road W5
£1,950

NOT SPECIFIED

South Ealing Road W5

£1,950

This beautifully presented two-bedroom split level property is located on the doorstep of local parks and shops of South Ealing Road and just moments from South Ealing tube station, whilst also affording easy access to Ealing Broadway and M4/A4. The property itself is bright and open throughout with the ground floor comprising a living room/ dining area and benefiting from loads of storage and separate fitted kitchen. Upstairs is a large family bathroom and two excellent size double bedrooms. Other benefits include wood floors and new carpets.

