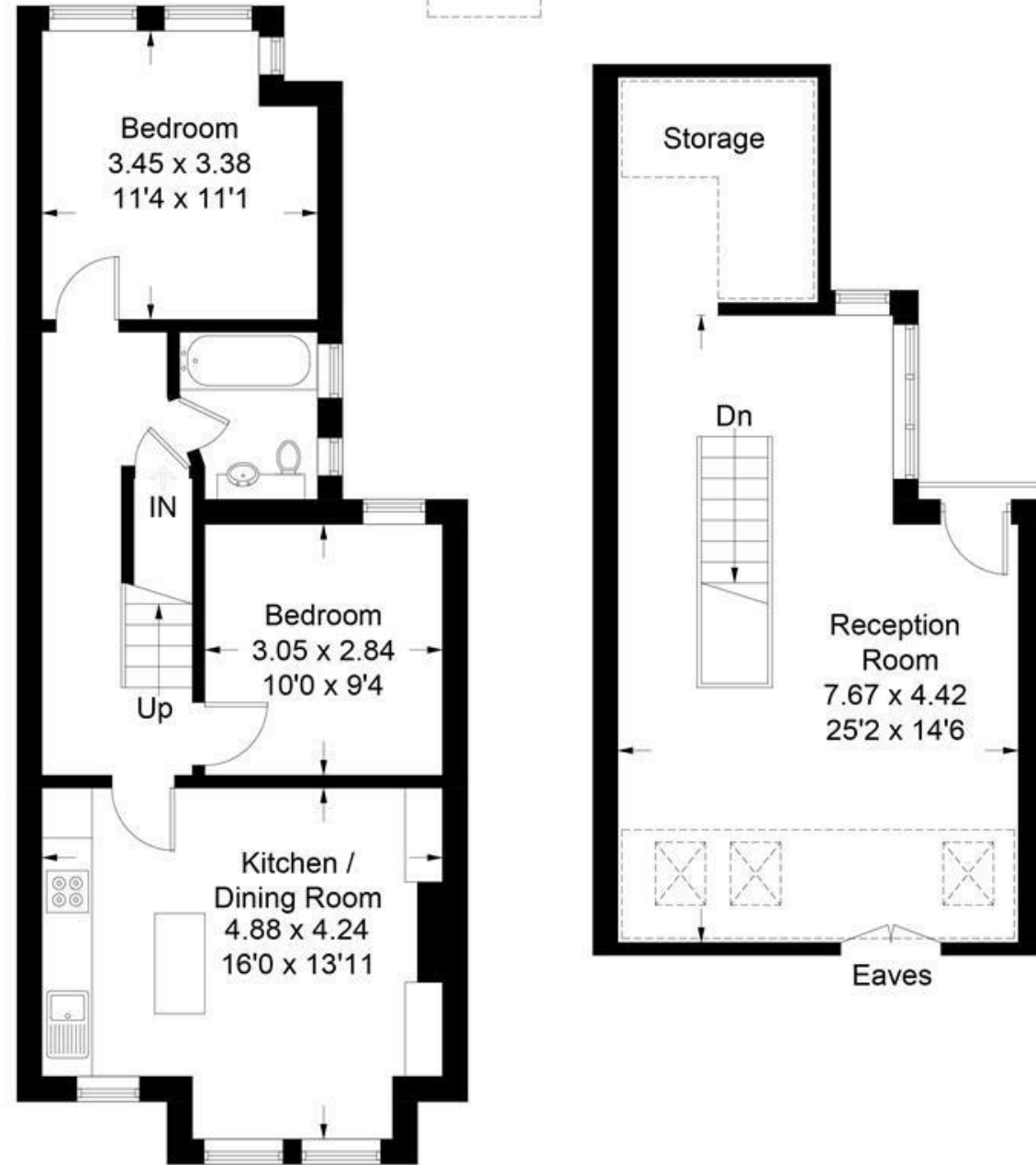


Windermere Road, W5

Approximate Gross Internal Area = 94.4 sq m / 1017 sq ft
(Including Reduced Headroom)



= Reduced Headroom



First Floor

Second Floor



FLAT

Windermere Road W5
£2,400

FEATURES

- Close to tube
- Modern conversion
- Two double bedrooms
- Backs on to Lammas Park
- Large eat-in kitchen

Measured in accordance with RICS Code of Measuring Practice. To be used for identification and guidance purposes only. Whilst every care is taken in the preparation of this plan, please check all dimensions, shapes and compass bearings before making any decisions reliant upon them. www.london58.com © 2021 hello@london58.com

FLAT

Windermere Road W5

£2,400

This unique, split level two bedroom property is nestled in the heart of Northfields on one of the area's most desirable roads, just moments from Northfields Tube Station.

Perfectly combining period features and stylish decor the property has been modernised throughout while still maintaining an abundance of charm and character. On the first floor is the contemporary kitchen that has been opened up to provide a sociable, fun space with the ample workspace and storage providing high levels of functionality. Two excellent sized double bedrooms and the family bathroom make up the rest of the first floor.

