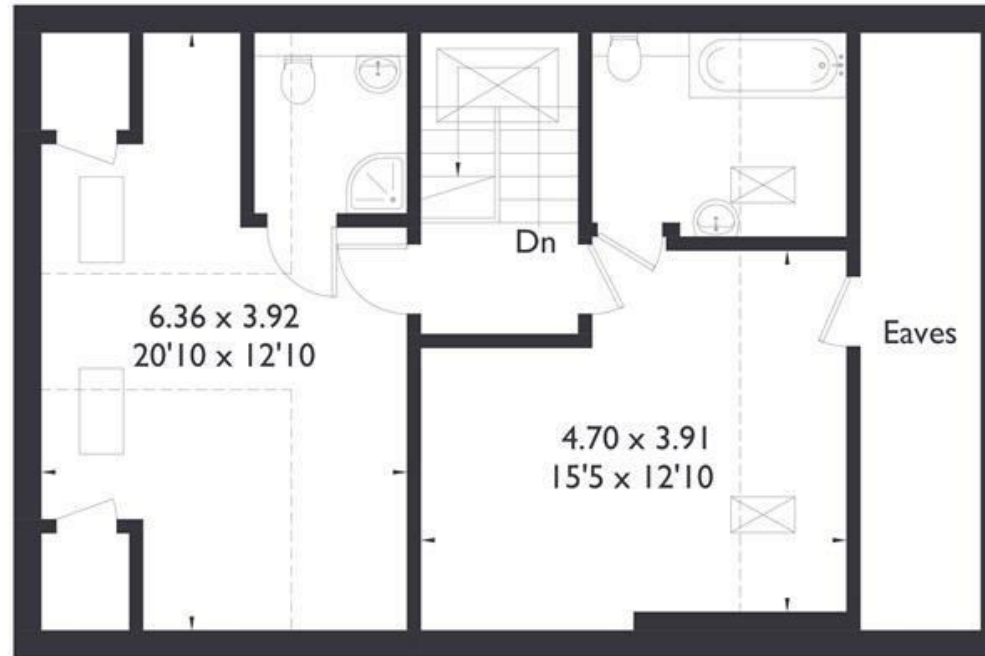
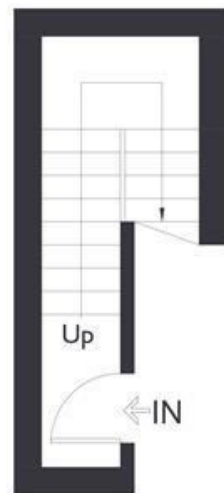


The Avenue, W13

Approximate Floor Area = 135.7 sq m / 1461 sq ft (Including Eaves)



Third Floor



First Floor



Second Floor



FLAT

FEATURES

The Avenue W13
£3,400 PCM

FLAT

The Avenue W13

£3,400 PCM

Beautifully refurbished 4 double bedroom flat situated on one of Ealing's iconic tree lined Avenues moments away from West Ealing station (0.1 miles) (Elizabeth line) and also provides routes into Paddington, Ealing Broadway, Heathrow Airport, Slough and Reading, and affording easy access to local shops, restaurants, and Waitrose supermarket. The accommodation comprises bright and spacious living room, New fully fitted separate kitchen room, two brand new bathrooms, Other benefits include storage cupboards & and new wood floors throughout.

