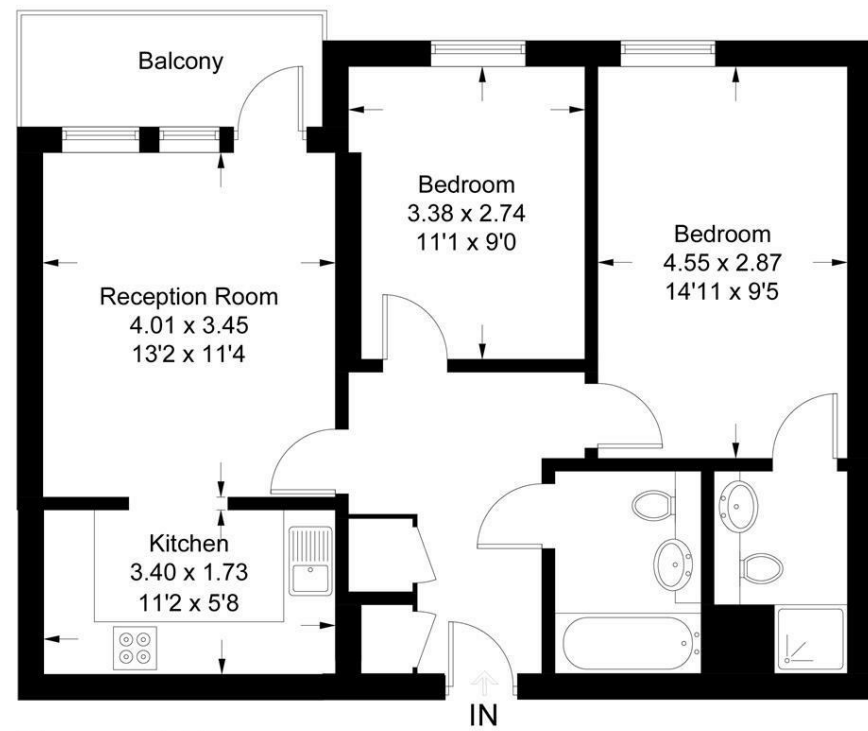


Singapore Road, W13

Approximate Gross Internal Area = 62.1 sq m / 668 sq ft



Second Floor

Measured in accordance with RICS Code of Measuring Practice. To be used for identification and guidance purposes only. Whilst every care is taken in the preparation of this plan, please check all dimensions, shapes and compass bearings before making any decisions reliant upon them. www.london58.com © 2019 hello@london58.com



FLAT

FEATURES

Singapore Road W13
£2,000

FLAT

Singapore Road W13

£2,000

Tucked away just off the Uxbridge Road, this contemporary apartment, in a private development, has a wonderful open plan living room and kitchen along with landscaped communal gardens.

Inside, the wide hallway has wooden flooring under foot and storage on the left hand side. The living room is to the left. It's bright, spacious and has direct access to the balcony. The kitchen is opposite with sleek black counter space and plenty of wooden cabinets. Most of the appliances are fully integrated and the room has been designed to ensure everything is easily to hand. The family bathroom has a fresh white suite and is decorated

