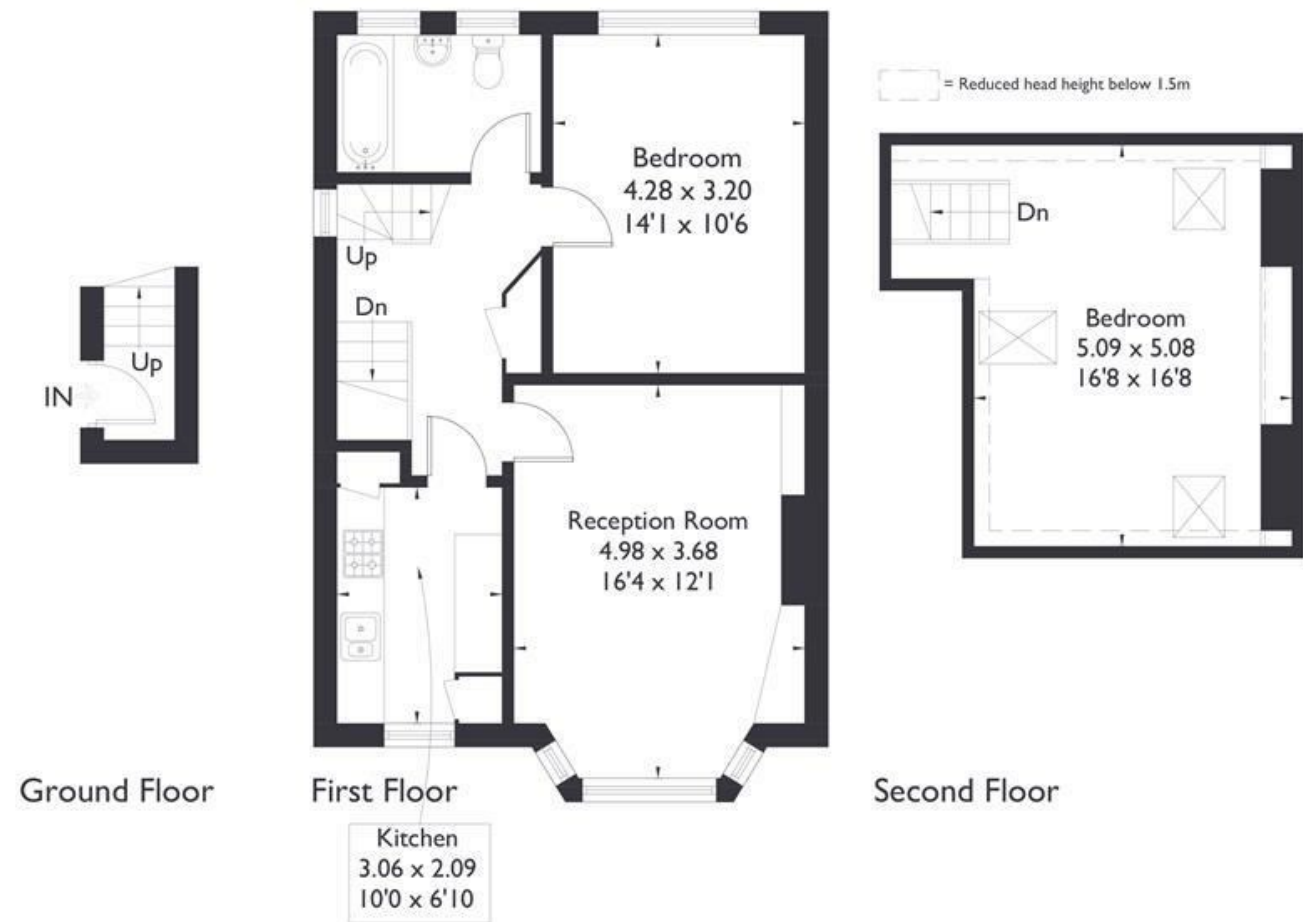


Boston Manor Road Brentford, TW8

Approximate Floor Area = 78 sq m / 839 sq ft



FLAT

Boston Manor Road TW8
£1,795 Per Month

FEATURES

- Large One Bedroom
- Additional loft space perfect for an office
- Newly redecorated
- Modern kitchen and bathroom
- Close to transport
- Part furnished

FLAT

Boston Manor Road TW8

£1,795 Per Month

Welcome to this charming property located on Boston Manor Road in Brentford. This delightful home boasts a spacious reception room, a large double bedroom, modern kitchen, and a well-appointed bathroom.

This home exudes character while also featuring modern touches, having been newly decorated to a high standard. The addition of a converted loft space provides a versatile area that could be used as a study, office, or even a guest room, catering to your individual needs.

Situated close to Boston Manor Tube Station, commuting is made easy, offering quick access to the heart of the city and beyond. The large bright living room is a standout feature of this property, providing a welcoming space filled with natural light for you to enjoy.

