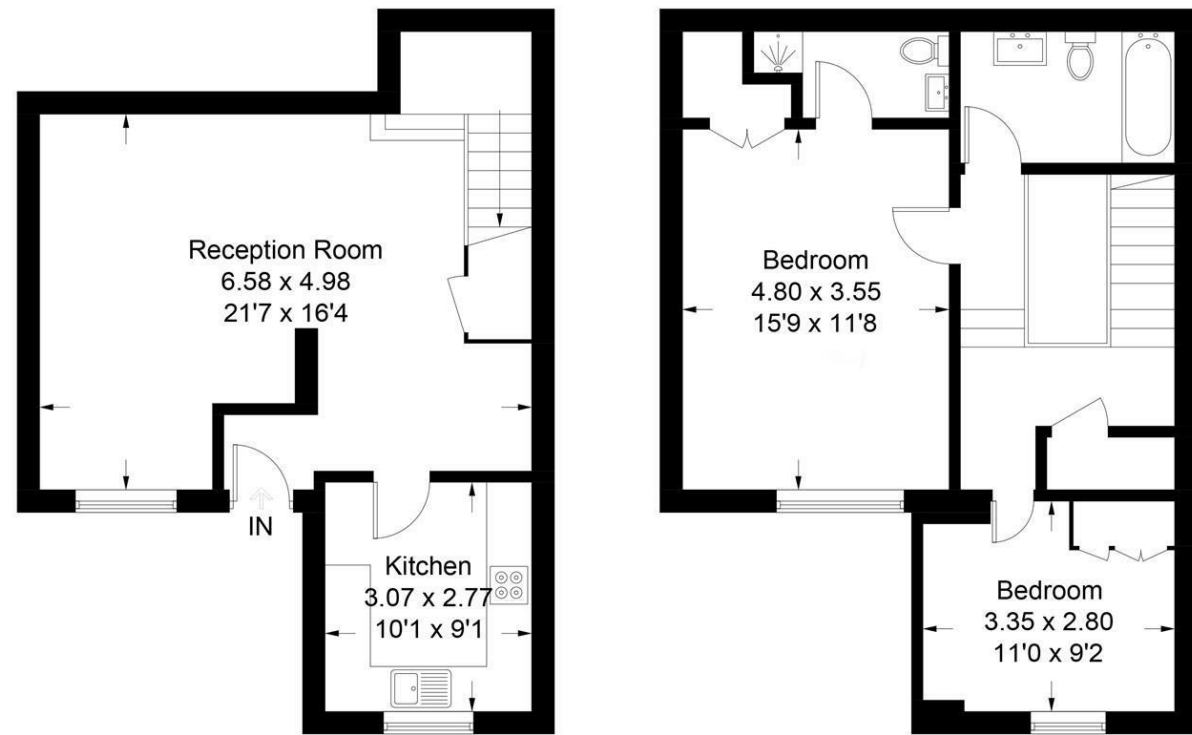


Moorside Court, Somerset Road, London, W13

Approximate Gross Internal Area = 90.3 sq m / 972 sq ft
(Excluding Void)



Ground Floor

First Floor

Measured in accordance with RICS Code of Measuring Practice. To be used for identification and guidance purposes only. Whilst every care is taken in the preparation of this plan, please check all dimensions, shapes and compass bearings before making any decisions reliant upon them. www.london58.com © 2019 hello@london58.com



HOUSE - SEMI-DETACHED

FEATURES

Somerset Road W13
£2,600

HOUSE - SEMI-DETACHED

Somerset Road W13

£2,600

This unique two double bedroom house with private off street parking is set within a gated development on a beautiful tree lined road just moments from both Walpole and Lammas Parks, and is a short walk from Ealing Broadway and Northfields Tube Station.

The house itself is an excellent size, the large hallway and open living room create an amazing sense of space as you enter the property on the ground floor, with the separate kitchen providing plenty of work space and storage. The first floor has two good size bedrooms, both of which have built in storage and the master bedroom has a contemporary en-suite shower room.

