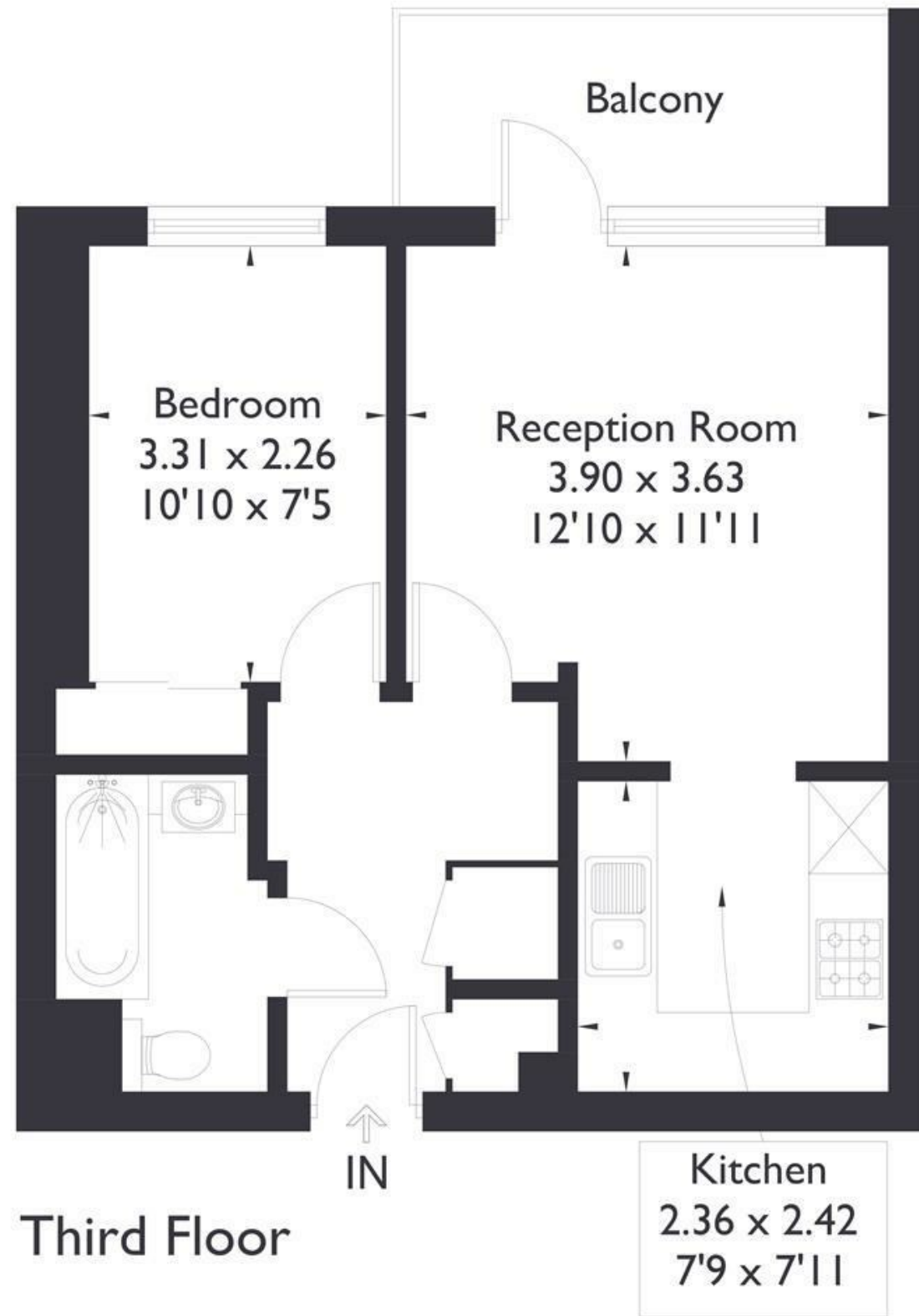


Flat 21, Rosemoor House, 90-94 Broadway, W13  
Approximate Floor Area = 39.6 sq m / 426 sq ft



Third Floor



APARTMENT

**Broadway W13**  
£1,495

FEATURES

- Modern Apartment
- Private Balcony
- On-site Gym
- Water Bills Included
- Walking distance to Elizabeth Line
- Secure Entry Phone System
- Dishwasher
- Washer/Dryer



APARTMENT

# Broadway W13

£1,495

This well maintained one bedroom apartment is located on the third floor of a modern block, located within walking distance of West Ealing Station, Elizabeth Line and within easy reach of Ealing Broadway. The property comprises a double bedroom with built in wardrobes, a contemporary bathroom, a bright and spacious living room with access on to the private balcony overlooking the private courtyard with fountains. The modern kitchen has plenty of workspace and built in appliances, including a dishwasher and washer/dryer. There are also the additional benefits of large storage cupboards in the hallway, wood flooring throughout, secure video entry phone, a lift and use of the resident on-site gym. Water rates are also included in the rental price.

