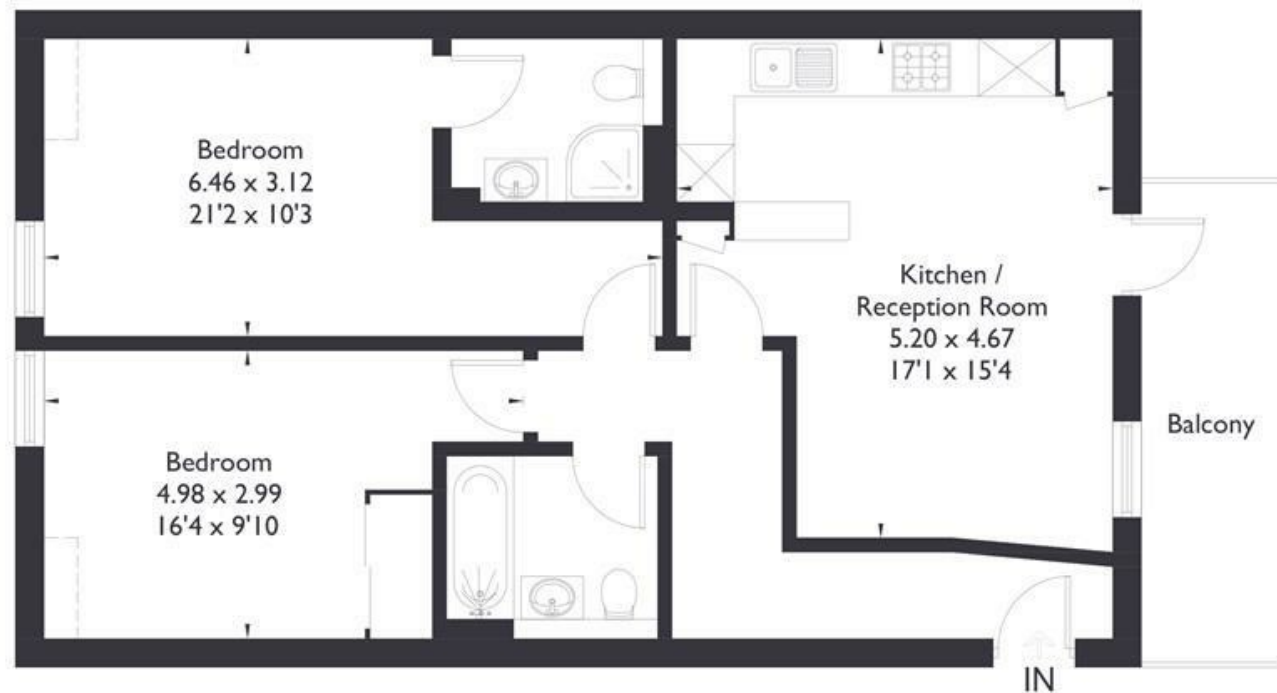


The Broadway, W5

Approximate Floor Area = 69.8 sq m / 751 sq ft



Third Floor



APARTMENT

The Broadway W5
£2,395

FEATURES

- Unique Central Location
- Two Double Bedrooms
- Two Bathrooms
- En-Suite
- Modern Apartment
- Private Balcony
- Open Plan Living

APARTMENT

The Broadway W5

£2,395

This exquisite two bedroom, two bathroom flat set within a contemporary collection of apartments in the prime location of Ealing Broadway.

Step into modern elegance as you enter the large hallway and through to the open-plan kitchen and living room, seamlessly leading out to a charming balcony, perfect for enjoying the views of the surrounding area.

Situated near the Elizabeth line, this property offers convenience and accessibility to local amenities, ensuring a comfortable and vibrant lifestyle. With excellent transportation links, commuting into the city is a breeze, making this flat an ideal choice for urban living.

