



Camp End Road
WEYBRIDGE, KT13

yoodle[®]
Success and nothing less

A luxury seven bedroom mansion situated in the prestigious St Georges Hill



A magnificent seven-bedroom luxury mansion house with impressive accommodation in excess of 11,000 sq.ft. including a cinema room, indoor pool and leisure facilities and an outdoor pool and outdoor kitchen. Nestled on a beautiful site in the heart of St. George's Hill, a prestigious private estate in excess of 900 acres which includes a private championship 18-hole golf course, an additional 9-hole course, a private tennis club with a 20 meter swimming pool and a squash club. It is extremely secure with 24 hour on site security.

Set behind electric gates, on approach you will immediately be struck by the feeling of grandeur this imposing house offers. The front door leads to an impressive reception hall with marble flooring and a sweeping marble staircase with a wrought iron balustrade leading to the first floor. Beyond this there is a dining hall which is an ideal hosting space with its high ceilings and full length windows overlooking the garden.

The accommodation has been cleverly arranged over three floors with the ground floor offering a beautifully fitted Italian kitchen by Composit with Miele appliances. The kitchen is an open plan layout with a dining and living area overlooking the garden. It also has double doors to the dining hall which suits more formal occasions and has double doors to a large drawing room. There is also a further TV room, a library, guest wc off hallway, utility/boot room with further wc off and a wine store.

The first floor includes an impressive master bedroom suite which boasts his and hers en suite bathrooms and his and hers dressing rooms. The en suite bathrooms are beautifully finished in Carrera marble with Milldue sanitary wear and a freestanding Corian bath. On this level there are four further bedroom suites all with en suite bathrooms and either walk in wardrobes or fully fitted wardrobes.

The lower ground floor boasts a stunning spa complex with exercise pool with spa bath, gymnasium, changing facilities and



CAMP END ROAD, WEYBRIDGE, KT13 0NR

£30,000 PER MONTH

Local Authority:

Council Tax Band:

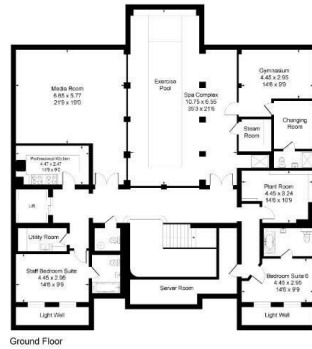
Furniture: Furnished/unfurnished

Parking:

Available Date: 5th October 2024

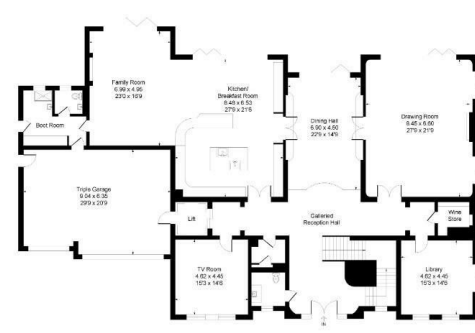
TOTAL APPROX. FLOOR AREA 11130.00 sq ft

Energy Efficiency Rating		Environmental Impact (CO ₂) Rating	
	Current	Potential	
<i>Very energy efficient - lower running costs</i>			
(92 plus) A			
(81-91) B			
(69-80) C			
(55-68) D			
(39-54) E			
(21-38) F			
(1-20) G			
<i>Not energy efficient - higher running costs</i>			
England & Wales	EU Directive 2002/91/EC		
		84	86
<i>Very environmentally friendly - lower CO₂ emissions</i>			
(92 plus) A			
(81-91) B			
(69-80) C			
(55-68) D			
(39-54) E			
(21-38) F			
(1-20) G			
<i>Not environmentally friendly - higher CO₂ emissions</i>			
England & Wales	EU Directive 2002/91/EC		

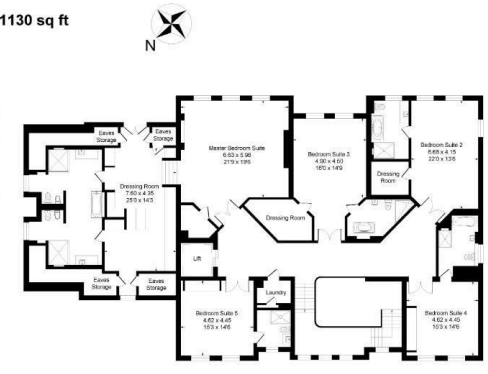


Ground Floor

St George's Hill KT13
Approximate Gross Internal Floor Area = 1034.0 sq m / 11130 sq ft

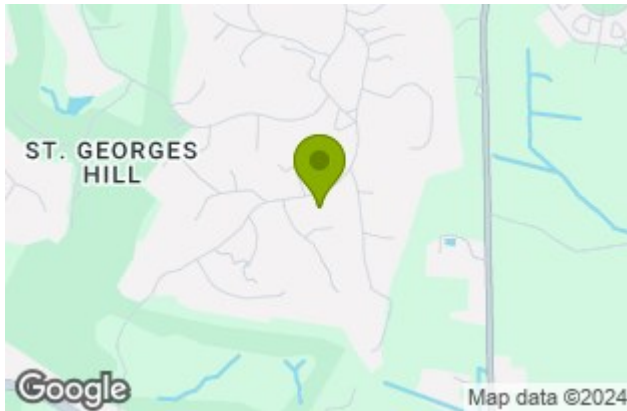


Ground Floor



First Floor

Illustration for identification purposes only, measurements are approximate, not to scale.
Produced By Esjay Property Marketing



Viewing: Please contact our Surrey Office on 01932 212 880 if you wish to arrange a viewing appointment for this property.

These particulars, whilst believed to be accurate are set out as a general outline only for guidance and do not constitute any part of an offer or contract. Intending purchasers should not rely on them as statements of representation of fact, but must satisfy themselves by inspection or otherwise as to their accuracy. No person in this firm's employment has the authority to make or give any representation or warranty in respect of the property.

BUILDING 5, THE HEIGHTS, SURREY, KT13 0NY

01932 212 880

hello@yoodle.co.uk

yoodle.co.uk

