



Gogmore Lane
CHERTSEY, KT16

yoodle[®]
Success and nothing less

A contemporary and spacious one bedroom apartment with gated parking.



A stunning one bedroom penthouse apartment situated in a sought after development which has recently been converted to contemporary well planned apartments which have been finished to the highest specification. Situated in the heart of Chertsey within walking distance of the train station, it is both surprisingly quiet but with everything on your doorstep.

The apartment itself really has the wow factor with sleek modern design and high quality fittings. Located on the top floor, is bright and spacious and offers a large open plan living/dining/kitchen area. The kitchen is ultra-modern in design and offers ample cupboard space and all integrated appliances. There is a double bedroom with fitted storage cupboard, a stylish bathroom with white three-piece suite and matt black fixtures. There is also a large storage cupboard to the hallway. There is an option to set up for a SMART system to control the heating, lights etc. It also comes with one allocated parking space which is set behind secure electric gates.

Chertsey's historic High Street is on your doorstep with its vibrant cafes and restaurants, independent boutiques, artisan shops and essential amenities. Gogmore Park is across the road and sits on the banks of the Bourne offering tranquil walks along the towpath. It also offers excellent transport links as is just off Junction 11 of the M25 and being under an hour to central London by train.

Internal viewing recommended to appreciate this beautiful apartment which is ideal for First Time Buyers or investors as it has an above average yield of over 6%.



GOGMORE LANE, CHERTSEY, KT16 9GG

ASKING PRICE £245,000

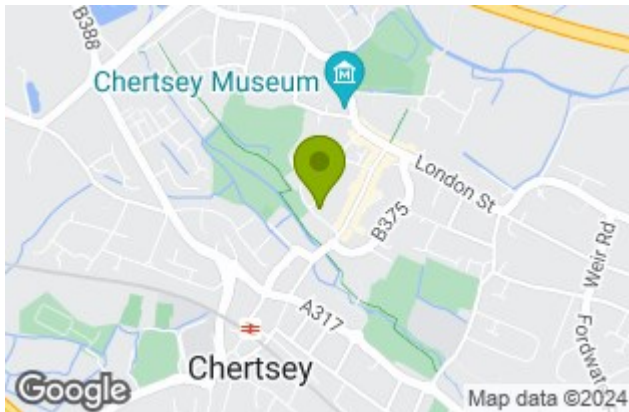
Local Authority: Runnymede

Council Tax Band: C

Parking: Allocated gated

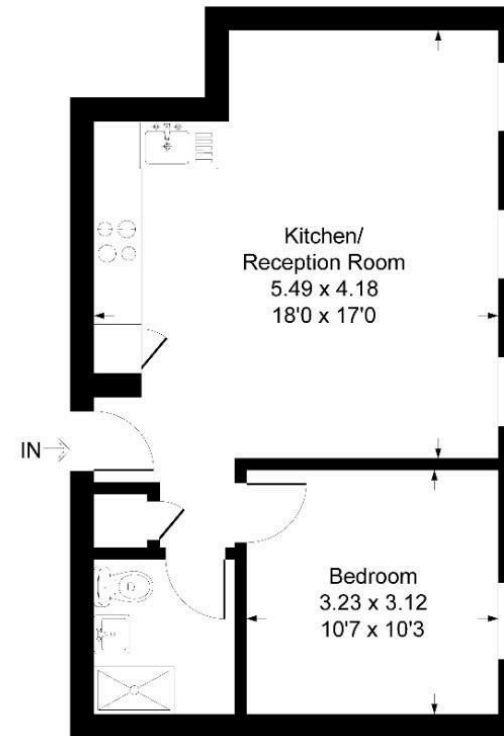
TOTAL APPROX. FLOOR AREA 467.00 sq ft

Energy Efficiency Rating		Environmental Impact (CO ₂) Rating	
Current	Potential	Current	Potential
Very energy efficient - lower running costs			
Very environmentally friendly - lower CO ₂ emissions			
England & Wales			
EU Directive 2002/91/EC			



Gogmore Lane KT16

Approximate Gross Internal Floor Area = 43.3 sq m / 467 sq ft



Third Floor

Illustration for identification purposes only, measurements are approximate, not to scale.

Viewing: Please contact our Surrey Office on 01932 212 880 if you wish to arrange a viewing appointment for this property.

These particulars, whilst believed to be accurate are set out as a general outline only for guidance and do not constitute any part of an offer or contract. Intending purchasers should not rely on them as statements of representation of fact, but must satisfy themselves by inspection or otherwise as to their accuracy. No person in this firm's employment has the authority to make or give any representation or warranty in respect of the property.

BUILDING 5, THE HEIGHTS, SURREY, KT13 0NY

01932 212 880

hello@yoodle.co.uk

yoodle.co.uk

