



Fox Lane North
CHERTSEY, KT16

yoodle®
Success and nothing less

A modern two bedroom flat situated in a popular town centre development with easy access to local amenities and the station.

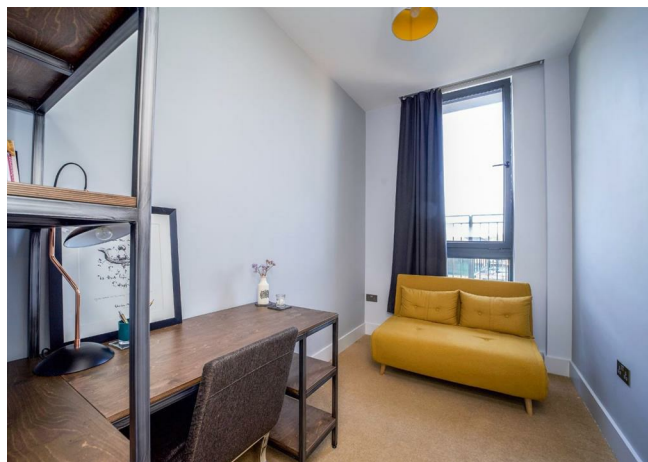


A contemporary two bedroom apartment in the popular Phoenix Plaza which is in the heart of Chertsey, just a stones throw of the station.

The property comprises, an open plan kitchen/living room with a Juliette balcony, a large double bedroom with fitted storage, a further single bedroom and bathroom with shower over bath.

Chertsey Town is within walking distance and offers an array of shops, restaurants and bars. The River Thames is also close by providing access to some beautiful walks through the Surrey Countryside.

The M25 and A3 are easily accessible as is Chertsey mainline train station.



FOX LANE NORTH, CHERTSEY, KT16 9GY

GUIDE PRICE £250,000

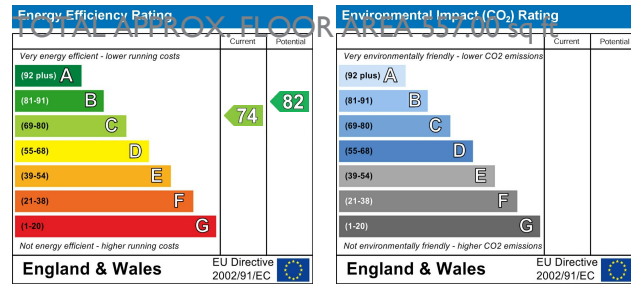
Local Authority: Runnymede

Council Tax Band: C

116 yrs Left on lease

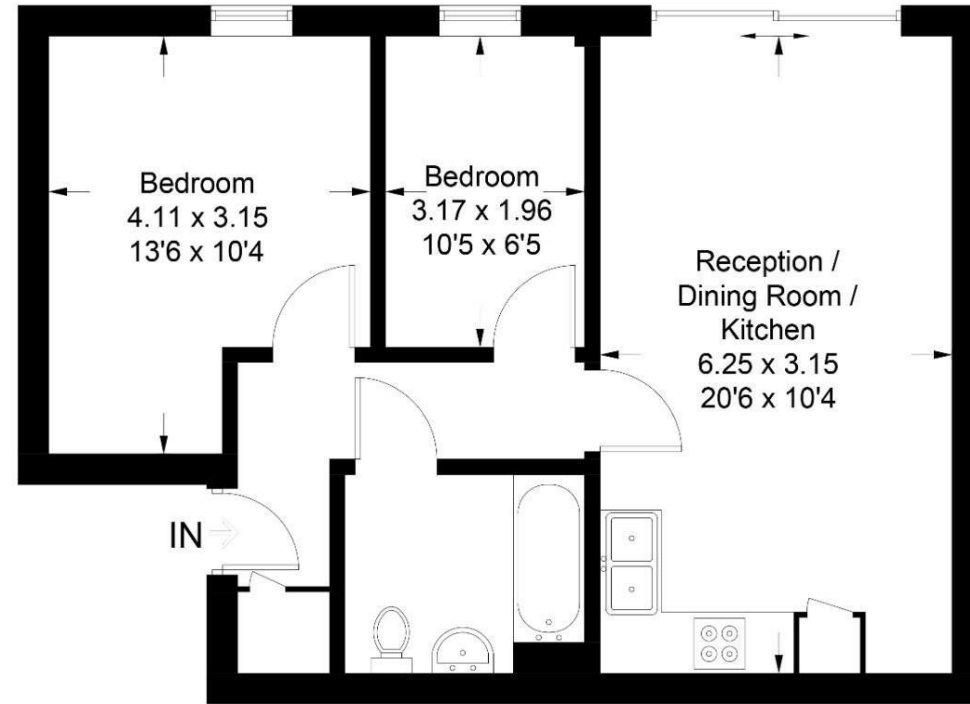
£100 PA Ground Rent

£2,446 PA Service Charge



Fox House, KT16

Approximate Gross Internal Area = 51.8 sq m / 557 sq ft



Third Floor

Illustration for identification purposes only, measurements are approximate, not to scale. floorplansUsketch.com © (ID718525)

Viewing: Please contact our Surrey Office on 01932 212 880 if you wish to arrange a viewing appointment for this property.

These particulars, whilst believed to be accurate are set out as a general outline only for guidance and do not constitute any part of an offer or contract. Intending purchasers should not rely on them as statements of representation of fact, but must satisfy themselves by inspection or otherwise as to their accuracy. No person in this firm's employment has the authority to make or give any representation or warranty in respect of the property.

BUILDING 5, THE HEIGHTS, SURREY, KT13 0NY

01932 212 880

hello@yoodle.co.uk

yoodle.co.uk

