



Hetley Road, W12

£475,000

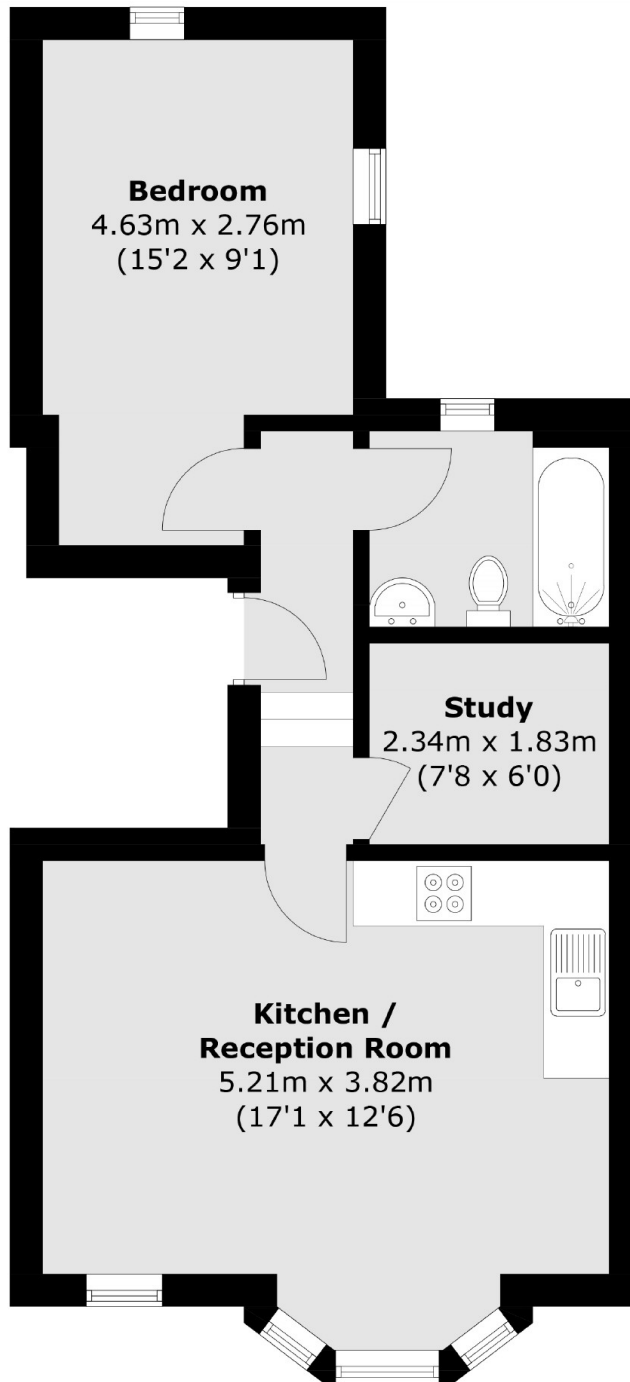
This first floor one bedroom apartment offers a fantastic specification, additional study and double bedroom. The open plan living is complete with engineered oak herringbone floor, Samsung kitchen appliances and large sash windows, welcoming plenty of natural light. The bathroom has floor to ceiling tiles, vanity mirror and storage.

Hetley Road is close to both Shepherd's Bush Market and Goldhawk Road Underground stations, with surrounding shops, restaurants and Westfield.

Features

Brand New Period Conversion
One Bedroom
Study
High Specification
Build Complete

Hetley Road, London, W12



Total area (approx.): 45.9 sq. m (494.1 sq. ft)