

Hetley Road, W12

£500,000

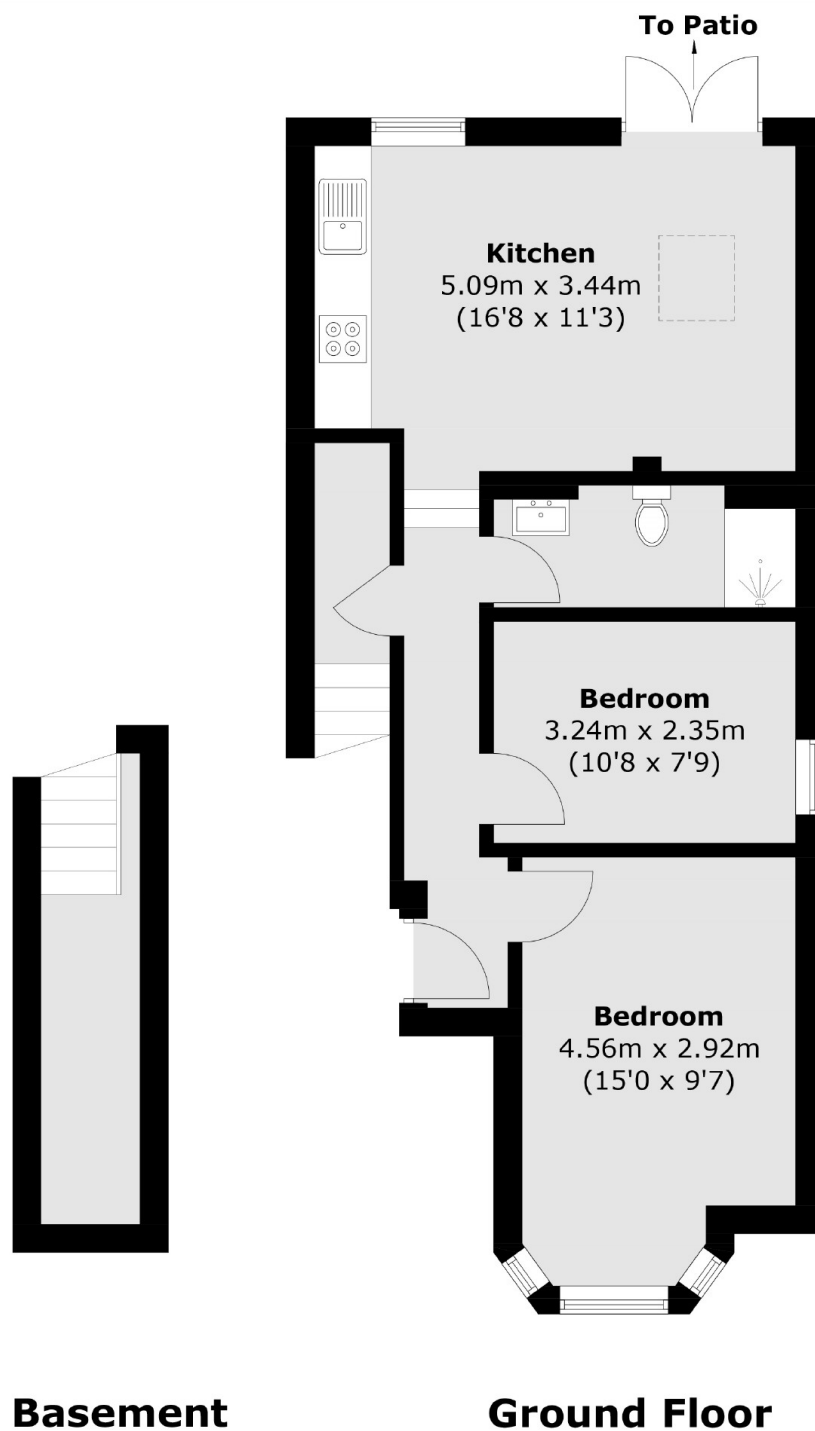
20 Hetley Road comprises two high specification, two bedroom apartments. Each one finished with engineered Oak, Herringbone floor and Samsung integrated appliances. Combining period charm with the convenience of a new home, these apartments benefit from lots of storage space and large sash windows allowing for plenty of light.

Only a stones throw from Westfield Shopping Centre, Hetley road boasts a variety of local amenities including bars, restaurants and convenience stores. Transport into Central London is a short walk away as are the cafes and restaurants of Brook Green.

Features

- Brand New Period Conversion
- Ready to move in now
- Two Bedrooms
- High Specification
- Boutique apartments
- Hammersmith & City Line
- Permit Parking Available

Hetley Road, London, W12



Total area (approx.): 56.7 sq. m (610.3 sq. ft)

Dexters

New Homes North & East
54 Borough High Street
London
SE1 1XL

020 7590 7299

Energy Rating: C. We aim to make our particulars both accurate and reliable. However they are not guaranteed; nor do they form part of an offer or contract. If you require clarification on any points then please contact us, especially if you're traveling some distance to view. Please note that appliances and heating systems have not been tested and therefore no warranties can be given as to their good working order.

 **RICS** | Regulated
Estate Agent
and Letting Agent

[dexters.co.uk](https://www.dexters.co.uk)