

## Hetley Road, W12

£650,000

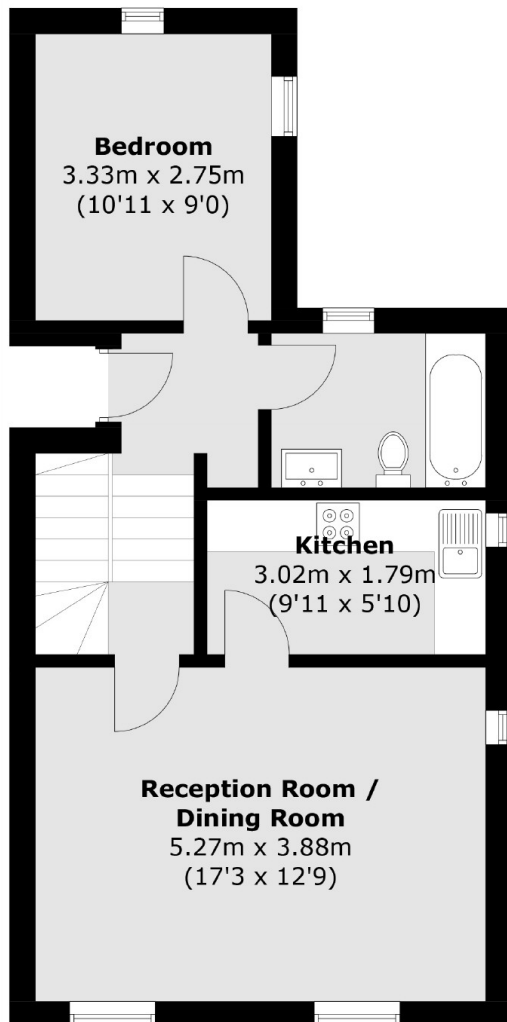
This two bedroom duplex apartment offers a fantastic specification, two double bedrooms with an additional study/walk in wardrobe to the principle bedroom. The open plan living room is complete with engineered oak herringbone floor and large sash windows. The bespoke kitchen includes Samsung appliances and quartz worktop. Bathrooms enjoy floor to ceiling tiles, vanity mirror and storage.

Hetley Road is close to both Shepherd's Bush Market and Goldhawk Road Underground stations, with surrounding shops, restaurants and Westfield.

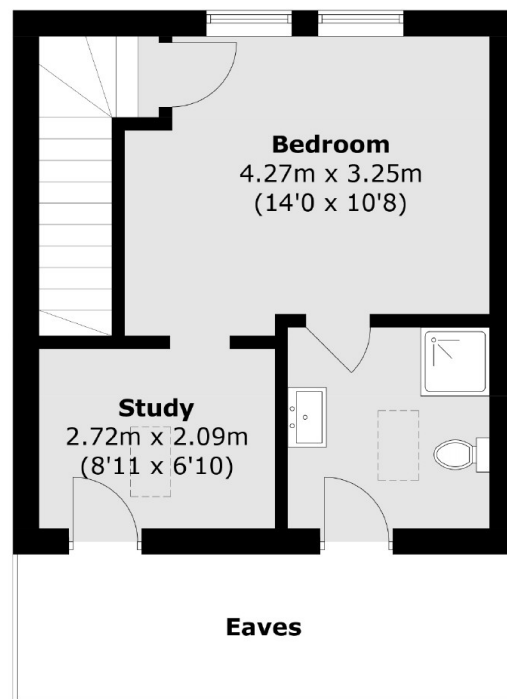
### Features

- Brand New Period Conversion
- Duplex Apartment
- Two Bedrooms
- High Specification
- Build Complete

# Hetley Road, London, W12



**Second Floor**



**Third Floor**

Total area (approx.): 79.4 sq. m (855.7 sq. ft)  
(Excluding Eaves)