

## Powell Road, E5

### £775,000

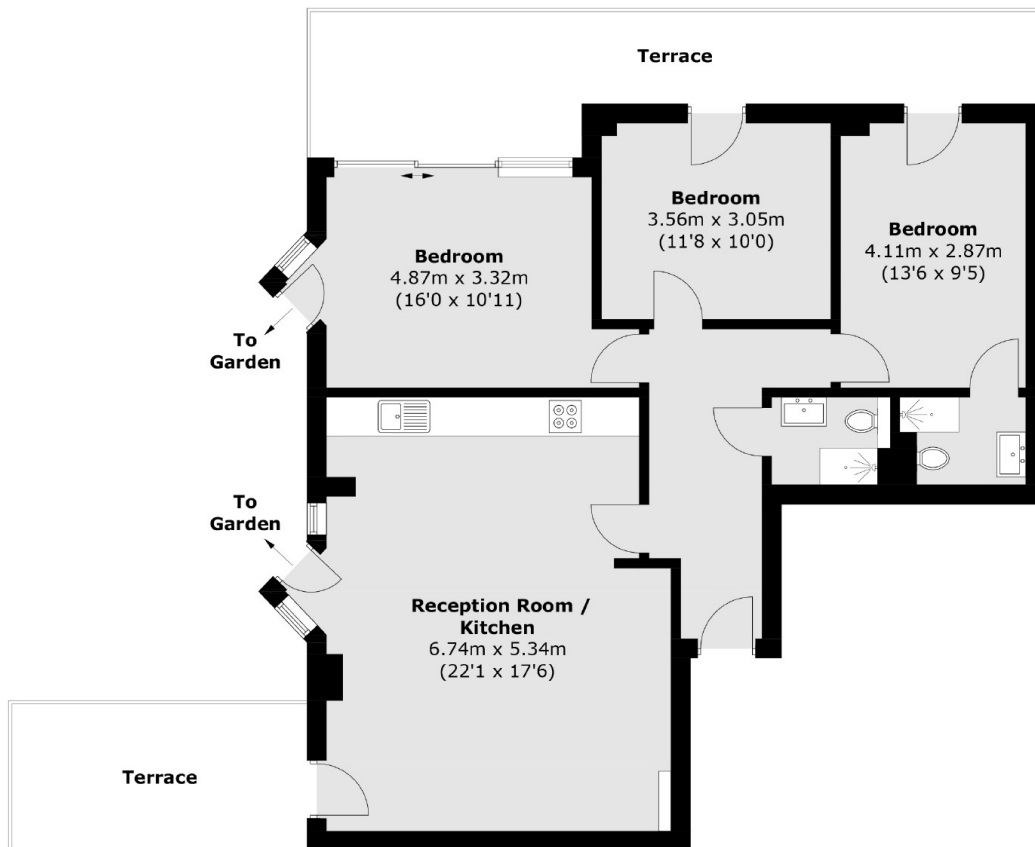
This gated development presents a limited collection of studios, one, two and three bedroom apartments which have been created with stunning specifications and private outside space with each home.

Clapton and Hackney Downs are highly sought-after neighbourhoods due to their easy access to the city. Clapton station is just 0.4 miles away, offering excellent connectivity southbound towards Liverpool Street in approximately 10 minutes. Alternatively, Hackney Central is 0.8 miles away, with convenient access to Stratford in around 15 minutes.

### Features

- Gated development
- Boutique apartments with modern interiors
- High specification
- Private outside space
- Close to amenities
- Secure Video entry system

# Powell Road, London, E5



Total area (approx.): 91.4 sq. m (983.8 sq. ft)  
Terrace: 30.0 sq. m (322.9 sq. ft)